





VALTÉ

MICMLXXVI



Blank flyleaf

Blank page



Blank page



LISLE COMMUNITY HIGH SCHOOL  
LISLE, ILLINOIS

Mary Beth Pechous—**Editor**  
Dennis Belom—**Business Manager**  
Miss Mary Benson—**Advisor**







Try to remember—September,  
when grass was green  
and leaves were  
                  red and yellow and brown;  
when footballs flew  
and cheerleaders yelled—  
                  happy, sad, encouraging;  
when rooms were hot  
and so were we—  
                  working, playing, perspiring;  
when the cycle began anew  
and our life resumed once more.



Our year together has been a treasury of memories — good and bad —  
friends,  
the new addition,

dances, soc-hops, Prom, Homecoming,

committee meetings,

bus rides, losing football games, losing basketball games,  
physical fitness tests,

apparatus, cold water fountains, the auditorium,  
a professional hypnotist,

worry, pressure, push, push, push,  
sleeping in study hall,  
tickets, programs, badges, and buttons,

**STUDY, STUDY, STUDY.**

**BOOKS,**

**EXAMS,**

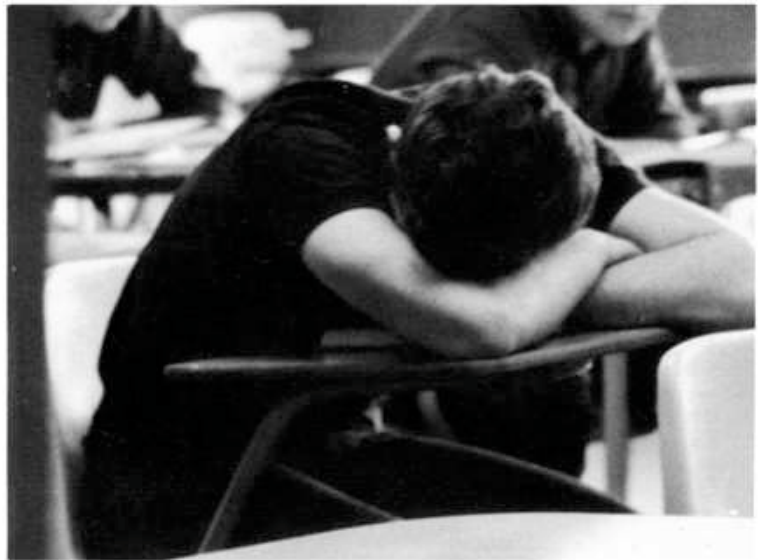
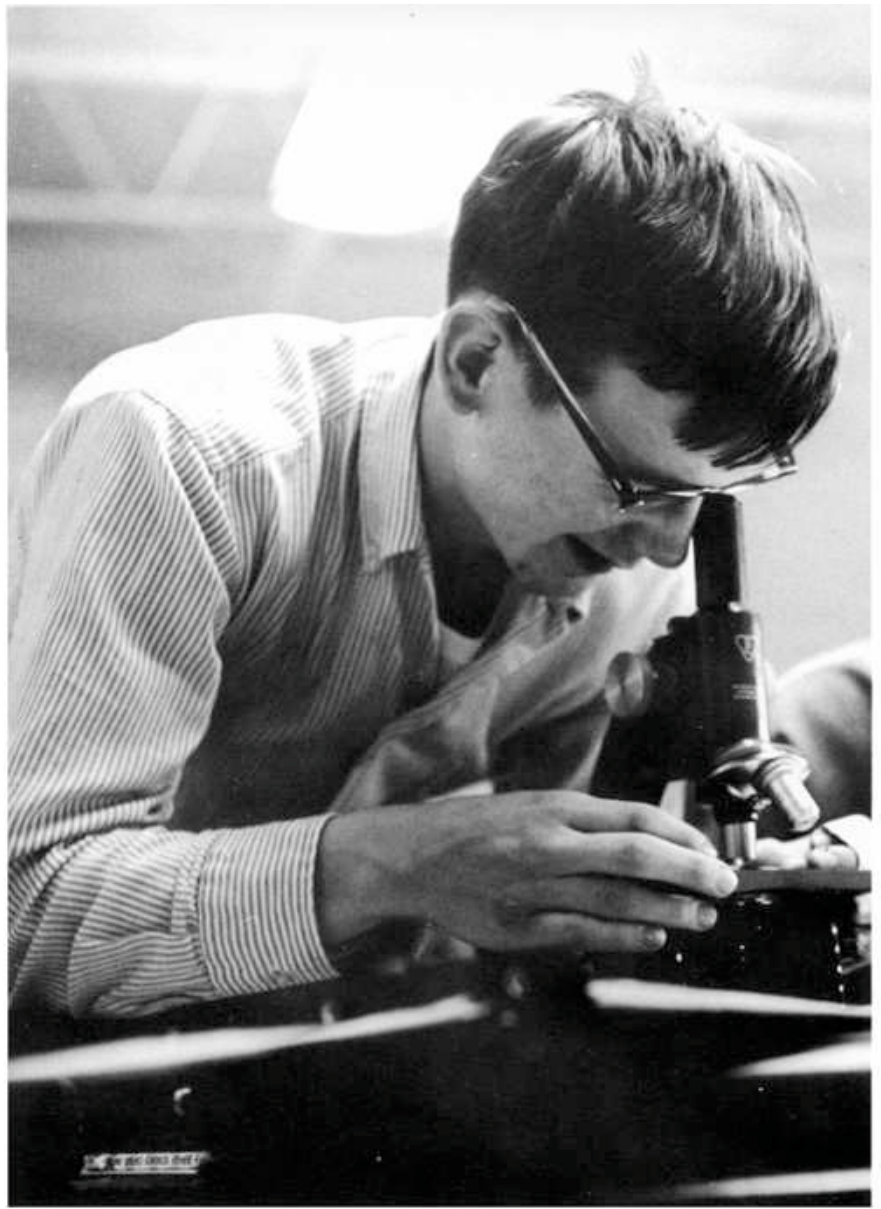
**TERM PAPERS,**

**STUDYING,**

**TESTS,**









**We faced the exciting challenge and responsibilities of:  
international understanding—our first foreign exchange student,  
Monika Wulf, the Model United Nations Assembly;  
patriotism—Viet Nam  
cooperation—our first musical, "Brigadoon;"  
organization—the new Northeast Conference;  
hospitality—the District Speech and Drama Contest, the Lisle  
Invitational Debate Tournament.**

**We used our expanded facilities to the utmost in meeting these  
challenges and fulfilling our commitment.**

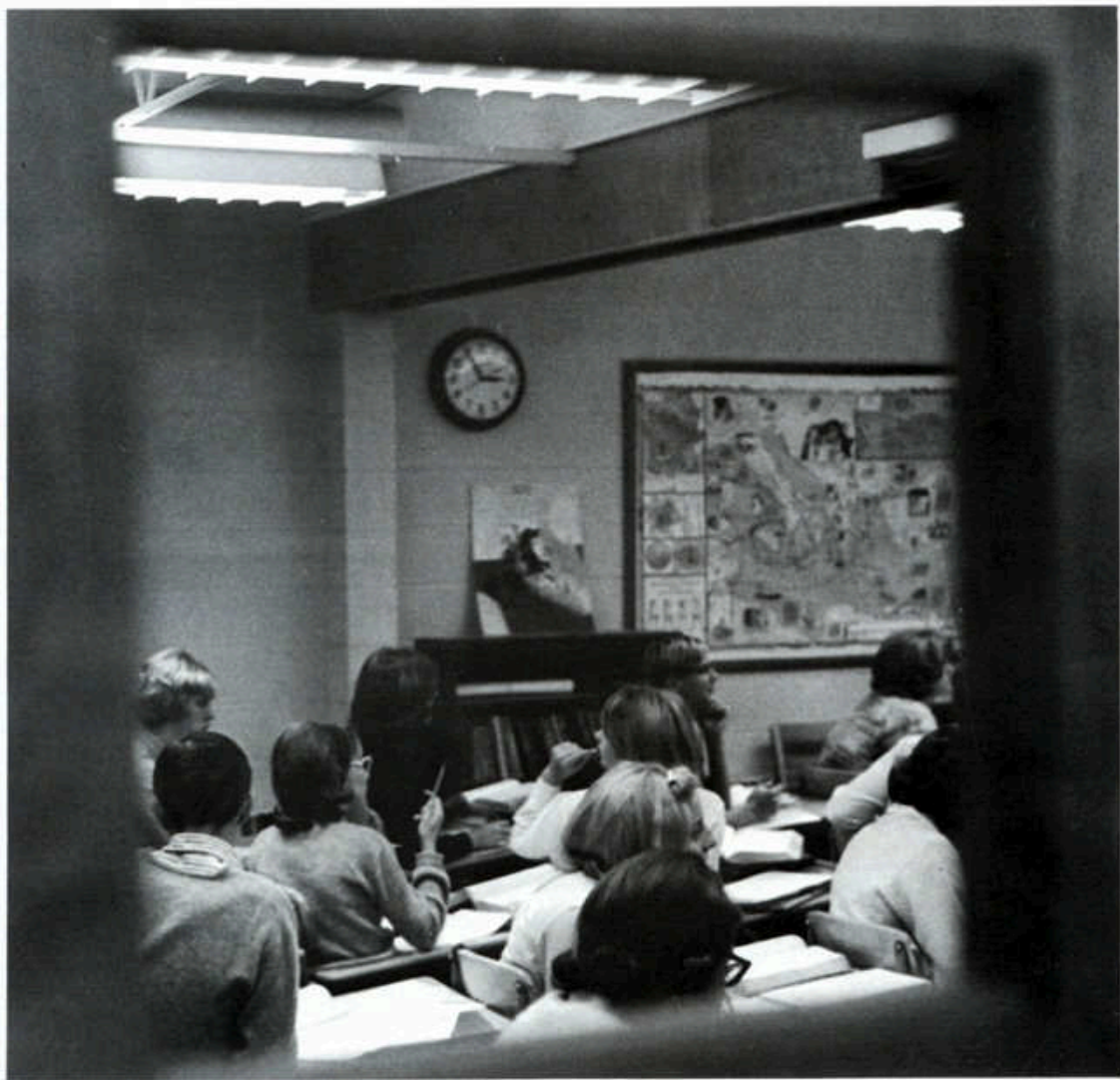




The one factor which has made this year different from others is PRIDE. Lisle is a small school in an area notorious for mammoth educational factories. It is understandable that our students would be impressed with many of the visible attributes of these large schools. But during this year, 1965-1966, we have stopped belittling ourselves simply because of our size. We have discovered that, with initiative, ambition, and desire, we can accomplish almost anything a larger school can. In Debate, in Drama, in Music, and in Cheerleading competition we have shown that we are capable of beating the largest schools. This newly-acquired attitude is a fertile one; if nurtured it might develop the type of school spirit we have been searching for.







# ACADEMICS





**MR. RAYMOND MILLER** — Superintendent of Schools

## Administrative Staff



**MR. GENE CUSIC** — Principal



**MRS. ROSEMARIE EVERETTE** —  
Secretary



**MRS. HELEN LINDEMANN** —  
Secretary

No school could function without its administrative staff. Besides Mr. Miller and Mr. Cusic are the two aides-de-camp, Mrs. Everette and Mrs. Lindemann, who handle the many problems, questions, and telephone calls which come during a typical school day. Without this staff, the business of the high school would come to a standstill.

## The Faculty



lectures . . .



reprimands . . .



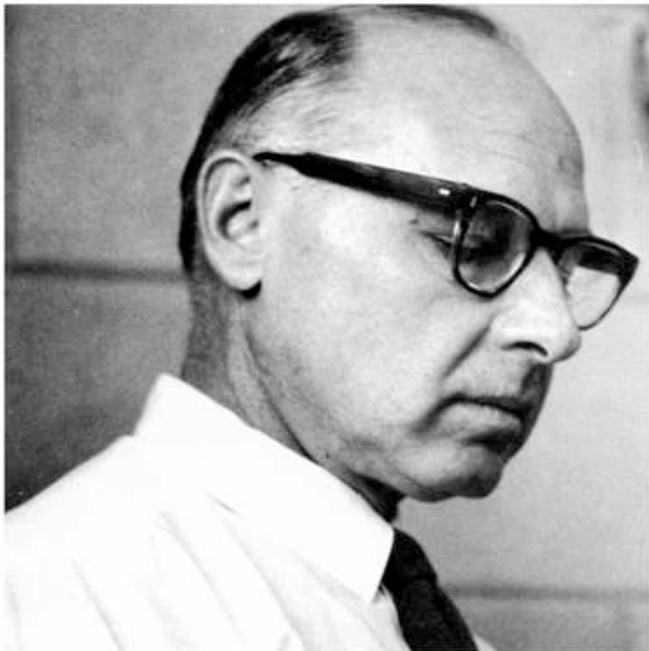
demonstrates . . .

participates . . .





The library is an essential supplement to English courses.



**MR. DANIEL WHITMARSH** — English; Varsity Football; Debate



**MR. RICHARD PALZER** — English; Speech, Drama



The introduction of several new semester courses this year allowed Seniors to choose a year of English tailored to suit their needs. While the Senior program offered composition, world literature, business English, and speech, the underclassmen program remained the same, except for the addition of elective honors English on each level. Freshman English was basically an introduction to literature, speech, and grammar. The Sophomores received a course in American literature, while the Juniors studied English literature. The four years of study are designed to give each student a good background in all forms of English language usage.



An intrigued Freshman class learns about debate and speech techniques.

## English and Speech

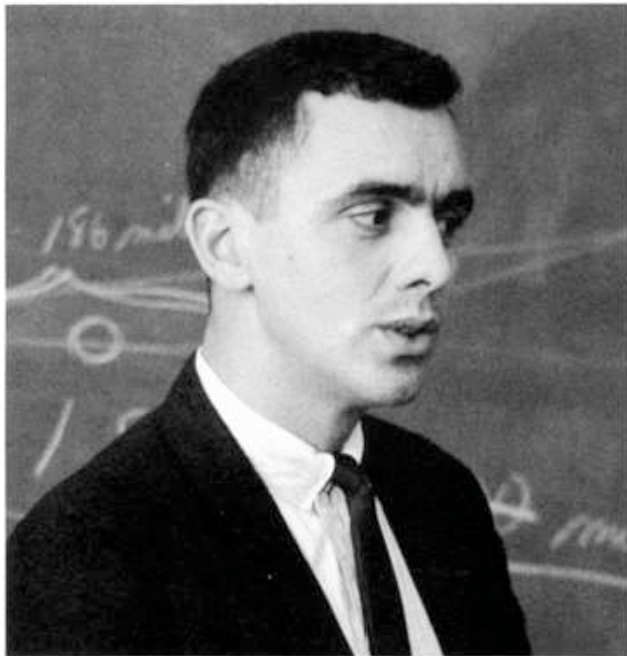


MRS. LEOTA PROKOP — English; Future Teachers of America



MRS. RUTH MICHAEL — English; Freshman Class Sponsor

During the first half of the year the science classes were without laboratories. This was particularly missed by the new chemistry course, Chem Studies, a course relying mainly on experimentation. Experiments were carried on — though in a "slop-jar" method. With the new addition open, however, experiments and investigations were conducted in a more scholarly fashion.



**MR. JOHN MULCARE** — Chemistry, Physical Science; Junior Class Sponsor; Science Club; Assistant Drama Coach

**MRS. MAY AVERY** — Science Aide



**MR. CLARENCE JENSEN** — Physical Science, Physics, Electronics; A-V Advisor

## Science



**MR. JOHN CIESIELSKI** — Biology; Drivers' Education; Varsity Basketball Coach; Track Coach



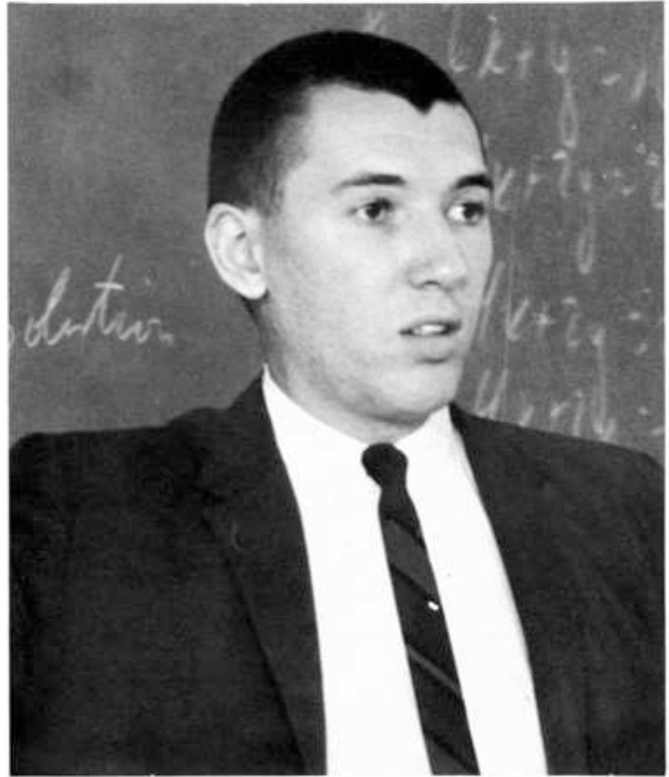


The mathematics department witnessed a turnover in personnel with the addition of Mr. James and Mr. Light to replace Mr. Bark and Mr. Hettinger. Functions, the Senior advanced mathematics course, was extended from the semester course it had been last year to two semesters. A variety of other math courses were offered to satisfy any and all student needs.

**MR. ANDREW SAMIDE** — Geometry, Math II; Sophomore Class Sponsor; Assistant Track Coach



**MR. DONALD JAMES** — UICSM Algebra, Functions



## Mathematics

**MR. WARREN LIGHT** — Algebra, Probability







**MRS. VERA BLAZEK** — French; Senior Class Advisor



**MRS. MARGARET GOODELL** — Spanish; Spanish Club

## Language

**MRS. WINIFRED SHANNON** — Latin; Librarian



The French, Latin, and Spanish classes continued to improve this year. Using tapes, movies, and filmstrips, the language teachers, Mrs. Blazek, Mrs. Shannon, and Mrs. Goodell made learning another language even more fun. Adoption of the ALM, Audio-Lingual Method, that the Spanish classes had used before, greatly enhanced the beginning French program. More advanced classes reviewed grammar and verb, and read short or condensed stories as supplementary material.



**MR. ROBERT JONES** — Business Law, Economics, Economics, U. S. History; Newspaper

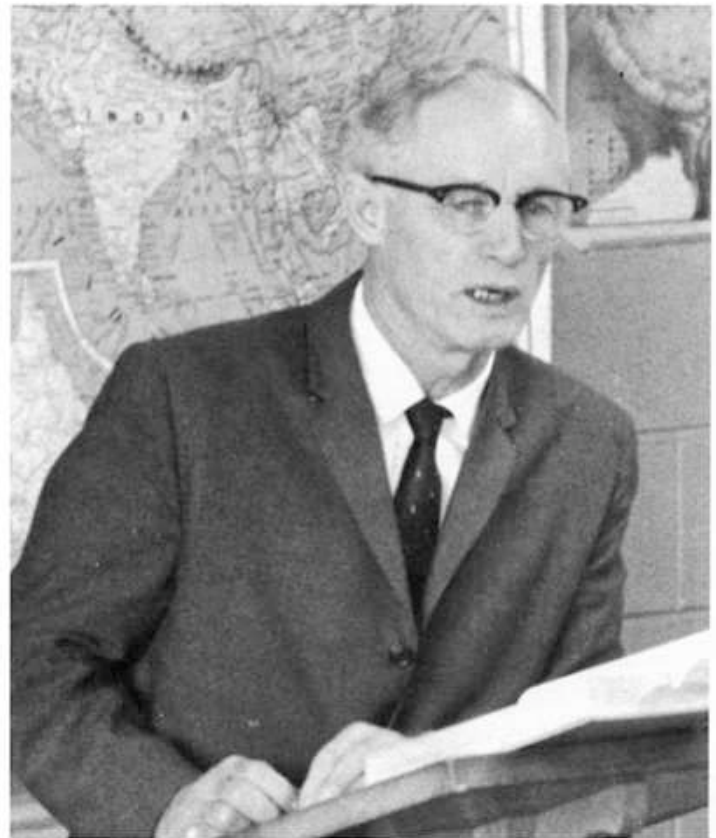
Classes in the Social Sciences were as numerous and as interesting this year as in former years. Beginning with introductory courses of World Geography and Psychology, the curriculum advances through specific area histories to the advanced World Problems and Modern European History classes.

## Social Sciences

**MR. ANTHONY CASTINO** — Modern European History, Psychology, Sociology, U. S. Government, U. S. History, World History; Student Council



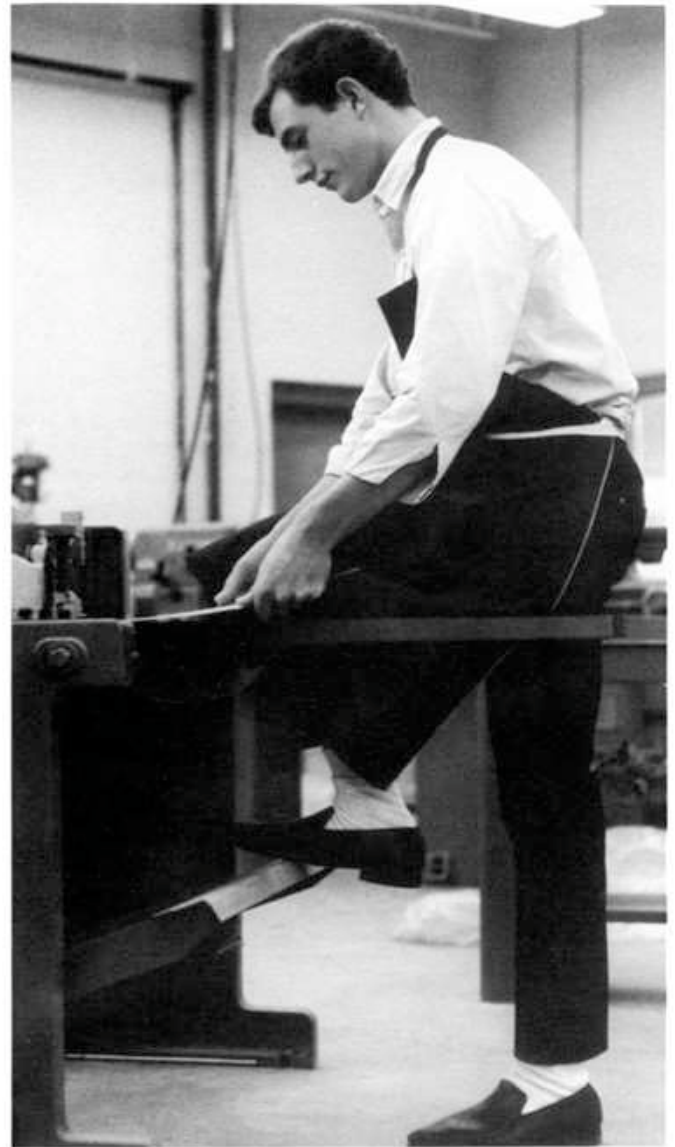
**MR. GEORGE RAPP** — Drivers' Training, World Geography, World History, World Problems; Baseball; Drama







Excitement and thrills abounded when, thanks to a lengthened gymnasium, girls' and boys' gym classes were held at the same time. A lack of partitions made gym the most eagerly anticipated class of the day for certain lucky people. The industrial arts classes were equally excited about the new shop. Since it was the first part of the addition completed, the huge new shop, filled with machines and equipment, was put into use immediately. Both mechanical drawing classes, taught by Mr. Saatkamp, and home economics under Mrs. Johansen, kept their former rooms, as students learned the arts of precise drawing and homemaking.



With the new shop and added machinery, industrial arts students were able to learn and build more effectively.

**MRS. CAROL DIACOVA** — Girls' P. E.; G.A.A.; Cheerleaders





**MISS MARY BENSON** — Business Education; Yearbook; Commercial Club



**MR. WILLIAM FEE** — Boys' P. E., Mechanical Drawing; Athletic Director; Freshman Basketball Coach

## Applied Arts

**MR. GAROLD SAATKAMP** — Industrial Arts



**MRS. ANN JOHANSEN** — Home Economics, FHA Advisor



The fine arts department has benefited greatly from the new addition. For the first half of the year both chorus and band members crowded into the annex to the gym; but the new band and chorus room which was available in January more than compensated for former discomfort. Art classes continued to offer training and direction for artistic skills in the same room under the instruction of Mrs. Todd.

## Fine Arts



**MR. ROBERT BARTELT** — Band

**MRS. LOU ANN TODD** — Art



**MRS. PATRICIA DENSFORD** — Chorus





**MR. RICHARD THOMPSON** — Guidance Counselor; Frosh-Soph Basketball

The uncertainty about what to do after high school faces all students at some time. The offices of Mr. Bushdiecker and Mr. Thompson are open for discussion of these and other problems. A library of college catalogues, with their supply of information, the counselors are able to help students with future opportunities and present problems.

## Guidance

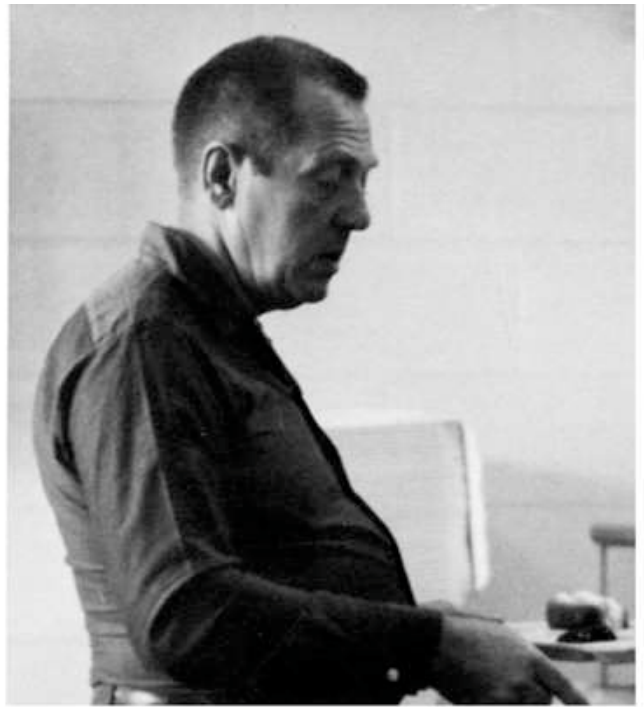


**MR. ROGER BUSHDIECKER** — Guidance; Pep Club

Frequent visits by college representatives help juniors and seniors to pick the college of their choice.



**MRS. LEONA DAVIS** — Head Cook



**MR. CLARENCE WILDE** — Custodian

## Staff

**MRS. VERNA MINNICK** — Nurse



Few students realize the activity and preparation that goes on in a school besides the training and education of young minds. Hot lunches, milk, and ice cream are sold each day by the school cafeteria. The people who engineer this operation are the three cooks: Mrs. Burkman, Mrs. Gross, and Mrs. Siebert. Cleaning and sweeping the school, breaking open jammed lockers, shoveling snow, and keeping a close eye on the comfort of the school are the three custodians: Mr. Wilde, Mr. Voight, and Mr. Engelbach. These six indispensable people do as much as possible to keep students well-fed, warm, and happy in their pursuit of knowledge.

**MRS. IRENE BURKMAN** — Cook







**MRS. EVELYN GROSS** — Cook



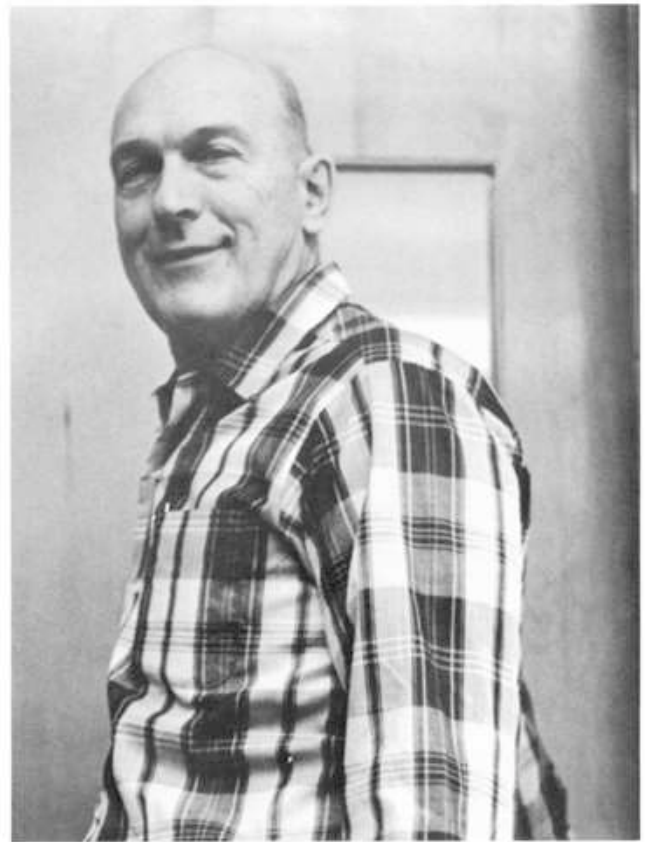
**MRS. ELSIE DUBIN** — Library Assistant

**MRS. GRACE SIEBERT** — Cook



**MR. ROBERT ENGELBACH** — Custodian

**MR. AL VOIGHT** — Custodian





The proposed Senior Court as it appeared under construction.

WILLIAM F. ADAMEC: Basketball 1; Sophomore Class Vice-President; Football 1,2,3, Co-Captain 4; Pep Club 4; Student Council 1, Ways and Means 1; Track 1,2; Varsity Club 3,4. MYRON ARMBRUSTER: Naperville Community High School, Naperville, Illinois, 1,2. HELEN AGNES BARTA: Band 1,2,3,4, Twirler 1,2,3,4; Drum Majorette 4; Chorus 1,2,3,4; Freshman Class Secretary, Sophomore Class Treasurer; Drama Club 1,2,3,4; French Club 1,2,3,4; Future Homemakers of America 1; Girls' Athletic Association 1,2; Homecoming Court; Pep Club 1,2. DONALD D. BEALS: Band 1,2,3,4; Basketball 1,2,3,4; Hall Monitor 3; Intramural Basketball 3; Student Council Ways and Means 1; Track 2,3. JOHN PAUL BEAUDETTE: Morton East High School, Cicero, Illinois, 1,2,3; Basketball 4; Track 3; Wrestling 1,2,3. DENNIS J. BELOM: Bowling League 1, Secretary 2, President 3; Chorus 4; Pep Club 4; Science Club 4; Student Council 4, Social 4; Track 2,3,4; Varsity Club

3,4; Yearbook 3, Business Mgr. 4; CARLA GERTRUDE BENEFIELD: Chorus 4; Future Homemakers of America 1,2,3,4; Hall Monitor 4; Spanish Club 1,2; Library Aide 2. NORMA LEE BENSON: Commercial Club 4; Future Homemakers of America 2. LARRY BICE. DWIGHT KENNETH BRENSTEIN: Thornton High School, Harvey, Illinois, 1,2; Audio Visual 1,2,3, President 4; Debate 1,2; Hall Monitor 2; Intramural Basketball 1; Electronics Club 1,2, President 3,4; Track 2; Wrestling 2. JANICE LOUISE BRINKMEYER: Chorus 4; Sophomore Class Secretary, Junior Class Treasurer; Drama Club 4; Future Teachers of America 3, Vice-President-Treasurer 4; Girls' Athletic Association 4; National Honor Society 3,4; Pep Club 1,2; Student Council Social 4; Yearbook 3,4; Library Aide 4. NANCY ANN BURKMAN: Band 1,2,3,4; Drama Club 2,4; Hall Monitor 2; Pep Club 2; Spanish Club 2; Library Aide 1,2.





WILLIAM F. ADAMEC



MYRON ARMBRUSTER



HELEN AGNES BARTA



DONALD D. BEALS



JOHN PAUL BEAUETTE



DENNIS J. BELOM



CARLA GERTRUDE  
BENEFIELD



NORMA LEE BENSON



LARRY BICE



DWIGHT KENNETH  
BRENSTEIN



JANICE LOUISE BRINKMEYER



NANCY ANN BURKMAN



CATHY ANN CANTWELL: Art Club 4; Future Homemakers of America 1; Girls' Athletic Association 1,4; Homecoming Court; Pep Club 1. MICHAEL CARRIE: Baseball 1,2,4; Basketball 1,2,3; Football 2; Varsity Club 2,3,4. JOHN BURTON CARTER: Band 1,2,3,4; Drama Club 4; Intramural Basketball 3; Science Club 2; Student Council 3, Treasurer 4, Calendar 3, Ways and Means 4; Track 1,2. JOHN DAVID CATLIN: Basketball 3; Chorus 1,2,3,4; French Club 1,2; National Honor Society 3,4; Newspaper 2, Editor 3,4; Science Club Chairman 2; Spanish Club 3; Student Council 3, Assembly 3, Social 2; Track 1,2,3,4; Yearbook 2. HELEN FRANCES CHRIST: Chorus 1,4; Senior Class

Treasurer; Drama Club 4; French Club 4; Girls' Athletic Association 4; Newspaper 4; Student Council 3, Assembly 4. CRAIG M. CLOUSTON: Plymouth Community High School, Plymouth, Indiana, 1,2; Newspaper Assistant Editor 4. MARTIN R. CORSO: Football 2. GEORGIA F. DECKER: Chorus 1,2. JAMES VICTOR DEGRAFF: Audio Visual 2; Basketball 1,2,3,4; Freshman Class Treasurer; Debate 3; Football 1,2; Intramural Basketball Coach 3; Science Club 3; Student Council 3, 4, Calendar 3, Election 4; Track 2,3; Varsity Club 2,3, 4. EILLEEN MARIE DOOLEY: Commercial Club 4; Drama Club 1,2. SUSAN GAYLE DUDLEY: Chorus 1; French Club 4; Future Nurses of America Vice-Presi-



CATHY ANN CANTWELL



MICHAEL CARRIE



JOHN BURTON CARTER



JOHN DAVID CATLIN



HELEN FRANCES CHRIST



CRAIG M. CLOUSTON

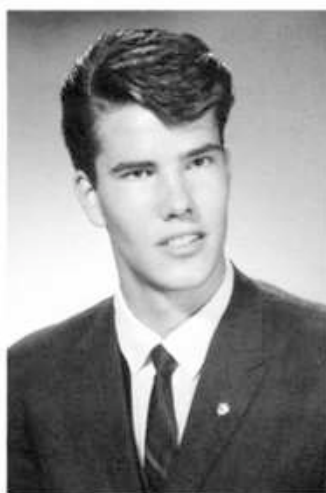


MARTIN R. CORSO



GEORGIA F. DECKER

dent 2; Hall Monitor 4; Pep Club 1; Library Aide 1,2,3. MICHAEL J. EHART: Intramural Basketball 3; Track 2. STEPHEN E. FERRIN: St. Procopius Academy, Lisle, Illinois, 1,2,3; Baseball 1,2; Basketball 1; Drama Club 4; Intramural Basketball 3,4. SANDRA J. FUQUA: Commercial Club 4; Future Homemakers of America 1,2. THEODORE R. GARRINGER: Football 1; Hall Monitor 4; Track 1; Wrestling 1. MARGARET GENDVIL. JOHN D. GOVI: Audio Visual 4. GERI LEE GRIF-FITHS: Sacred Heart Academy, Lisle, Illinois, 1,2; Art Club 1,2,3,4; Cheerleading 1; Chorus 1; Drama Club 2; Hall Monitor 1.



**JAMES VICTOR DeGRAFF**



**EILLEN MARIE DOOLEY**



**SUSAN GAYLE DUDLEY**



**MICHAEL J. EHART**



**STEPHEN E. FERRIN**



**SANDRA J. FUQUA**



**THEODORE R. GARRINGER**



**MARGARET GENDVIL**



**JOHN GOVI**



**GERI LEE GRIFFITHS**





ROBERT LEWIS GROSS



LYNDA DARLENE HALL



RONALD E. HALL



SYDNE JEANNE HALSTEN



MARK ALLEN HANSEN



PATRICK JOHN HEALY



RONALD EDWARD HEITZ



JAMES K. HERLIEN

ROBERT LEWIS GROSS: Hinsdale High School, Hinsdale, Illinois, 1; Football Manager 2,3; Intramural Basketball 3,4; Science Club 3; Track 2,3; Varsity Club 3; Swimming 1. LYNDA DARLENE HALL: Wheaton High School, Wheaton, Illinois, 1,2; Future Nurses of America 2. RONALD E. HALL: Aurora West High School, Aurora, Illinois, 3; Football 4; Track 3. SYDNE JEANNE HALSTEN: Wauwatosa West High School, Milwaukee, Wisconsin, 1,2,3; A Cappella 1,2; Chorus 1,2,3; Freshman Class Secretary; Commercial Club 4; Drama Club 1,2; Forensics 2; Future Homemakers of America 4; Girls' Athletic Association 1,2,3, Sports Chairman 4; Homecoming Court; Intramurals 1,2,3; Student Council 1,2,3. MARK ALLEN HANSEN: Audio Visual 3,4; Football 1,3; Track 2; Chess Club 1. PATRICK JOHN HEALY: Belmont High School, Victoria, British Columbia, Canada, 1,2,3; Band 2,3; Football 1,2,3; Hall Monitor 2,3; Track 1,2,3. RONALD EDWARD HEITZ: Football 2; Track 2. JAMES K. HER-

LIEN: Chorus 2; Hall Monitor 4; Track 2. DONALD EDWARD JOHNSON: Downers Grove Community High School, Downers Grove, Illinois, Track 1. DIANE JEAN KENDALL: Chorus 4; Commercial Club 4; Future Homemakers of America 2,3, Treasurer 4; Future Teachers of America Secretary-Treasurer 1,2; Girls' Athletic Association 1,2; Hall Monitor 2. LANA JEAN KING: Drama Club 1; Girls' Athletic Association 2, Treasurer 3,4; Student Council Assembly 2. GERALD JOHN KOFF: Football 1,2; Varsity Club 3,4. RICHARD C. KORBAR: Baseball 4; Basketball 1; Football 1; Spanish Club 4. MARY FELICA KOWALCZYK: Drama Club 1,2,3,4; Future Homemakers of America 1; Hall Monitor 4; Homecoming Queen. PEGGY ANN KRAL: Commercial Club 4; Future Homemakers of America 1,2,3,4; Girls' Athletic Association 1. SUE ANNE LARAMY: Grayslake Community High, Grayslake, Illinois 1; Band 1; Debate 3; Drama Club 4; Future Teachers of America 1,2,3,4; Girls' Athletic Association 1,4; Latin Club 1.





DONALD EDWARD JOHNSON



DIANE JEAN KENDALL



LANA JEAN KING



GERALD JOHN KOFF



RICHARD C. KORBAR



MARY FILICA KOWALCZYK



PEGGY ANN KRAL



SUE ANNE LARAMY

Senior Class Officers: Mary Beth Pechous, Secretary; Rick Simonson, President; Mike Williams, Vice-President; Helen Christ, Treasurer.





FRANCES LEMONS



LINDA LEE LEWIS



NANCY EILEEN LINDGREN



JOAN MARIE LISZKA



WALTER EUGENE LOCKETT



JOHN WAYNE LOSIC



JANET IRENE MARTIN



SARAH BETH MARTIN



JUNE McCROSSIN



RUSSELL LAWRENCE  
McILWAIN



DONALD WILLIAM  
McKIBBEN



BARRY RICHARD MELTON



FRANCES LEMONS: Future Homemakers of America 1,4; Girls' Athletic Association 1,4; Hall Monitor 4; Student Council Calendar 1. LINDA LEE LEWIS: Johnston High School, Johnston, Iowa, 1; Future Homemakers of America 1,2,3,4; Pep Club 1. NANCY EILEEN LINDGREN: Art Club 1,2; Future Homemakers of America 1; Future Teachers of America 1,2, Vice-President-Treasurer 3, President 4; Girls' Athletic Association 1, 2,3,4; Pep Club 2,3,4; Spanish Club 3; Student Council 4, Calendar 4. JOAN MARIE LISZKA: Commercial Club 4; Future Homemakers of America 1,4; Girls' Athletic Association 1. WALTER EUGENE LOCKETT: Basketball 2,3; Science Club 3; Student Council 4, Election 4; Track 2. JOHN WAYNE LOSIC: Wrestling 1. JANET IRENE MARTIN: Chorus 1,2,3,4; Girls' Athletic Association 1; Hall Monitor 4; Spanish Club 1,2; Student Council 1,2, Election 2. SARAH BETH MARTIN: Art Club 2; Cheerleading Mascot 3; Chorus 3,4, Accompanist 3,4; Freshman Vice-President; Drama Club 4; Future Homemakers of America 1,2; Future Nurses of America Secretary 2; Future Teachers of America 2,4, Secretary 3; Girls' Athletic Association 1; National Honor Society 3, Secretary 4; Newspaper Art Editor 3; Pep Club 1,3; Spanish Club 2; Student Council Election 2, Ways and Means 1. JUNE McCROSSIN: Lyons Township High School, LaGrange, Illinois, 1; Chorus 4; French Club 2,3; Pep Club 3. RUSSELL LAWRENCE McILWAIN: Audio Visual 2,3,4; Football 1; Hall Monitor 3; Intramural Basketball 3; Pep Club 1,2; Science Club 1; Student Council Vice-President 4, Building and Grounds 1, Election 2; Track 1,2. DONALD WILLIAM McKIBBEN: Hall Monitor 1; Yearbook Staff Photographer 4. BARRY RICHARD MELTON: Baseball 1,2; Band 1,2,3; Freshman Class President, Sophomore Class Vice-President; Drama Club 1,2,3,4; Intramural Basketball 1; National Honor Society 3,4; Pep Club 1; Science Club 1,3; Student Council 1, Evaluation 1, Ways and Means 4; Track 1. HOLLY JEAN MINNICK: Cheerleading 2,3,4; Future Teachers of America 2,3, Secretary 4; Girls' Athletic Association 4; Hall Monitor 3,4; National Honor Society 3,4; Pep Club 1,2,3,4; Student Council Calendar 1,4, Social 2,3; Yearbook 4. PATRICIA LYNN MLNARIK: Drama Club 1,2; Hall Monitor 3,4; Newspaper 4; Pep Club 1,2,3,4; Spanish Club 2; Yearbook 4; Library Aide 1,3. SUSAN JOY MULKINS: Band 1,2,3,4; Debate 3; Drama Club 1; Future Teachers of America 2,3; Girls' Athletic Association 1; Hall Monitor 3. LARRY GEORGE MURDOCK: Baseball 4; Audio Visual 4; Football 3,4; Newspaper 4; Pep Club 4; Track 1,2,3,4; Varsity Club 2,3,4. SUSAN MARY MURRAY: Washington Union High School, Fremont California, 1,2,3; American Field Service 2,3; California Scholarship Federation 1,2,3; Chess Club 2; Costumettes 3; Drama Club 1,2; Girls' Athletic Association 4; Huskiettes 1,2,3; Official Timer, Scorer for Swim and Water Polo Teams 2; Pep Club 1. SUSAN ANN NICHOLS: Band 1,2,3,4; French Club 1; Future Homemakers of America 1,2,3; Future Nurses of America 2; Girls' Athletic Association 1; Science Club 1.



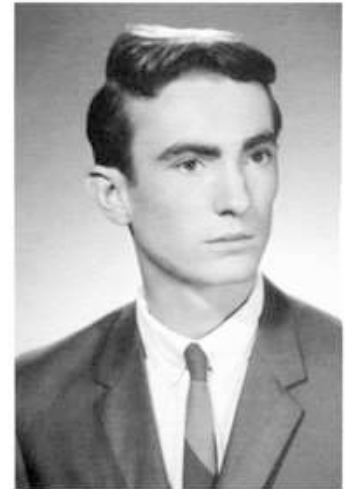
HOLLY JEAN MINNICK



PATRICIA LYNN MLNARIK



SUSAN JOY MULKINS



LARRY GEORGE MURDOCK



SUSAN MARY MURRAY



SUSAN ANN NICHOLS





JOHN PATRICK O'CONNOR



GERALD ALLEN PEARCE



MARY BETH PECHOUS



GLORIA PEHLKE



ROBERT H. PIPPENGER



DANNY EVAN PROUD

JOHN PATRICK O'CONNOR: Audio Visual 4; Basketball 1; Drama Club 1,2,3,4; Football Manager 1; Intramural Basketball 3; Pep Club 1,2,3; Science Club 4; Student Council Assembly 2, Building and Grounds 3; Election 1, Social 3; Yearbook 4; Library Aide 2.

GERALD ALLEN PEARCE: Band 1,2; Intramural Basketball 3,4; Student Council Election 1.

MARY BETH PECHOUS: Cheerleading 1,3, Captain 2,4; Chorus 2,3,4; Senior Class Secretary; Drama Club 1,2,3,4; Future Homemakers of America 1, Public Relations Chairman 2; Future Nurses of America 2,3; Girls' Athletic Association 4; Hall Monitor 1,2; Pep Club 1,2,3,4; Student Council 1, Building and Grounds 1, Election 2; Yearbook 2, Assistant Editor 3, Editor 4; National Honor Society 3,4.

GLORIA JEAN PEHLKE: Drama Club 1; French Club 3,4; Future Nurses of America 4; Girls' Athletic Association 4; Hall Monitor 4; Pep Club 1,2; Student Council 2; Yearbook 3,4.

ROBERT H. PIPPENGER: Audio Visual 3,4; Intramural Basketball 3; Track 1,2,3; Varsity Club 3,4.

DANNY EVAN PROUD: Band 1,2,3,4; Basketball 1,2,3,4; Sophomore Class President, Junior Class President; Football 1, Co-Captain 4; National Honor Society 3, President 4; Student Council Assembly 1; Track 1,2,3,4; Varsity Club 1,2,3,4.

JOHN FRANK REAVY: St. Philip High School, Chicago, Illinois, 1,2; Baseball 1,2,3,4; Varsity Club 2,3,4.

WILLIAM WAYNE ROGE: Basketball 1,2,3,4; Football 1,2,3; Student Council 1,2; Track 1,2,3,4; Varsity Club 2,3,4.

PAT RYCHTARIK: Future Homemakers of America 1; Spanish Club 1.

DOLORES DIANE SALTIS: Chorus 2,3; Commercial Club 4; Future Homemakers of America 1,2,3,4; Girls' Athletic Association 1,2; Library Aide 3.

RICHARD SARAGA: Golf Club 3,4; Intramural Basketball 3,4; Pep Club 3,4; Science Club 4; Track Manager 2,3.

ELIZABETH SCHEUNEMANN: Chorus 4; Commercial Club 4; Future Homemakers of America 4.

JAMES SEDLOCK: Lyons Township High School, LaGrange, Illinois, 1.

MICHAEL JON SIKORSKI: Band 1,2; Football 2,3,4; Intramural Basketball 3; Track 1,2; Varsity Club 2,3,4.

RICHARD DENNIS SIMONSON: Band 1,2,3,4; Basketball 1,2,3,4; Senior Class President; Drama Club 4; Football 2; National Honor Society 3,4; Science Club 2, President 3,4; Track 2,3; Varsity Club 4; Yearbook 3,4.

LINDA MARIA SKALIC: Cheerleading 3; Junior Class Secretary; Commercial Club 4; Drama Club 2,3,4; French Club 2,3; Future Nurses of America 2; Homecoming Court; Pep Club 2,3; Student Council 1, Secretary 4; Yearbook 3,4.

JIM SMRT: Football 1,2; Student Council 2, Calendar 1; Track 1.

JERRY SNOW: Art Club 3,4; Chorus 2,4; Drama Club 4; Pep Club 2,4.



JOHN FRANK REAVY



WILLIAM WAYNE ROGE



PAT RYCHTARIK



DOLORES DIANE SALTIS



RICHARD SARAGA



B. ELIZABETH  
SCHUENEMAN



JAMES SEDLOCK



MICHAEL JON SIKORSKI



RICHARD DENNIS  
SIMONSON



LINDA MARIA SKALIC



JIM SMRT



JERRY SNOW



SUZANNE ROBIN SPRIETSMA: Audio Visual 1; Band 1,2,3,4; Debate 2,3, President 4; French Club 1,2,3,4; Hall Monitor 4; National Honor Society 3,4; Science Club 1,2, Secretary 3; Student Council Social 4; Yearbook 4; Library Aide 1,2,3. LINDA LEE STANSFIELD: Dundee Community High School, Dundee, Illinois, 1,2; Lake Park High School, Medinah, Illinois, 3; Chorus 1, 4; Girls' Athletic Association 1. JULIA IRENE STRAUB: Band 1,2,3,4; Chorus 4; Drama Club 2,4; Future Homemakers of America 1,4; Future Nurses of America 2, 3,4; Girls' Athletic Association 1,3,4; Library Aide 1,2. MICHAEL J. TRAYER: Football 1,2; Track 1,2. GARY WAYNE TSUKUNO: York Community High School, Elmhurst, Illinois, 1; Drama Club 4; Football 2,4; Hall Monitor 4; Intramural Basketball 3,4; Student Council 3, President 4; Track 2,3,4; Varsity Club 2,3,4. MICHAEL ROBERT WILLIAMS: Steinmetz High School, Chicago, Illinois, 1; Baseball 2,3,4; Band 1; Basketball

2,3,4; Senior Class Vice-President; Football 2,4; Newspaper 4; Varsity Club 3,4; Yearbook 1. SANDRA SUE WILLIAMS: Cheerleading 1,3,4; Chorus 1,2,3,4; Junior Class Vice-President; Future Homemakers of America 1; Future Nurses of America 2, President 3; Future Teachers of America 3,4; Girls' Athletic Association 1,4; Pep Club 1,2,3,4; Student Council 2, Ways and Means 2; Yearbook 4; Library Aide 3. LINDA CHRISTINE WOOLVERTON: Debate 4; Future Homemakers of America 1,2,3,4; Future Teachers of America 2,3, 4; Hall Monitor 4; Spanish Club 1,2,3, President 4. MONIKA WULFF: Foreign Exchange Student from Verden, Germany; Art Club 4; French Club 4; Girls' Athletic Association 4; Newspaper 4; Pep Club 4. MADELIENE V. WYNS: Commercial Club 4; Future Homemakers of America 1,2; Future Nurses of America 2; Girls' Athletic Association 1,2; Pep Club 1; Spanish Club 2.



SUZANNE ROBIN SPRIETSMA



LINDA LEE STANSFIELD



JULIA IRENE STRAUB



MICHAEL J. TRAYER



GARY WAYNE TSUKUNO



MICHAEL ROBERT WILLIAMS



SANDRA SUE WILLIAMS



LINDA CHRISTINE WOOLVERTON

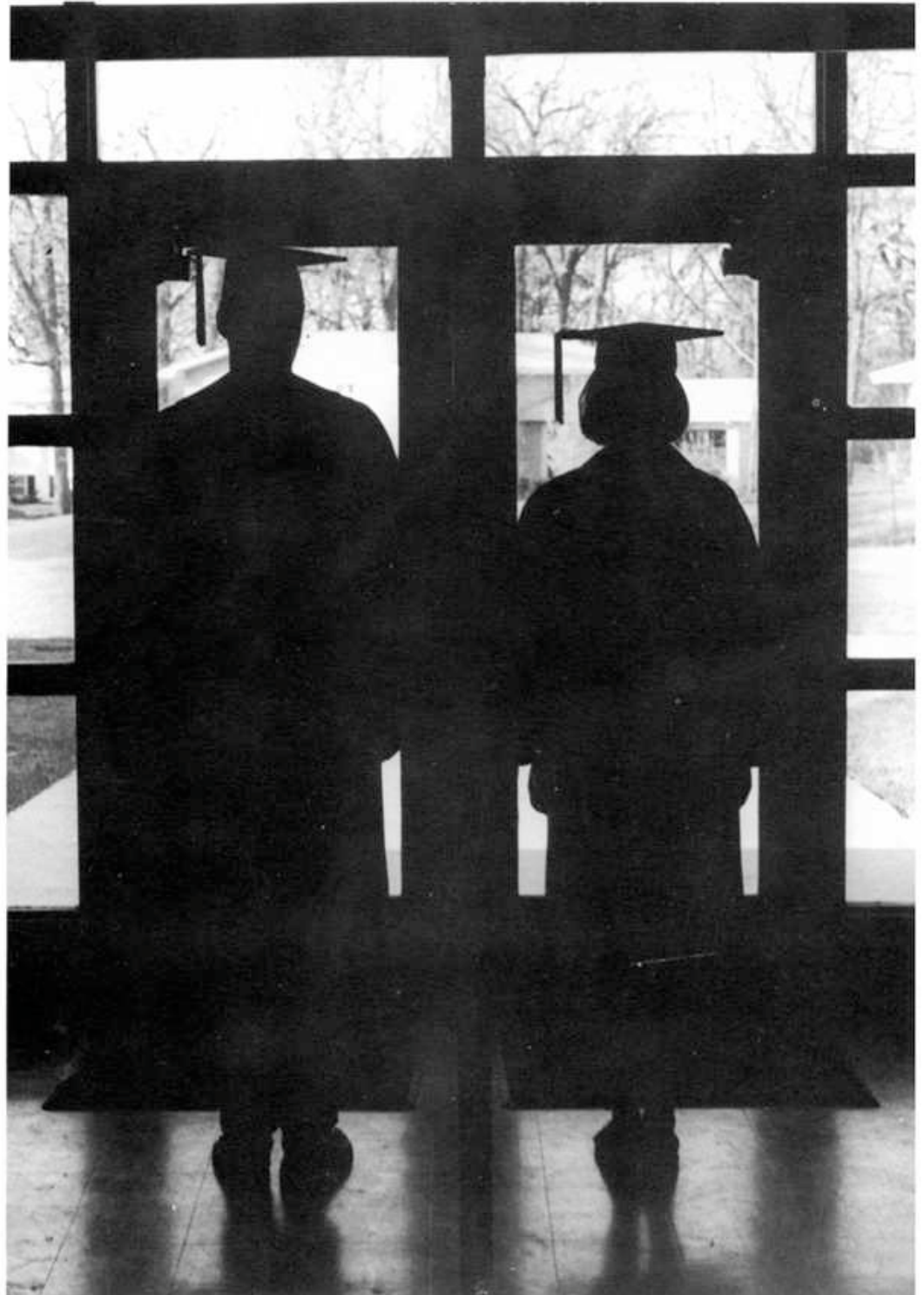




MONICA WULFF



MADELIENE V. WYNS



# JUNIORS

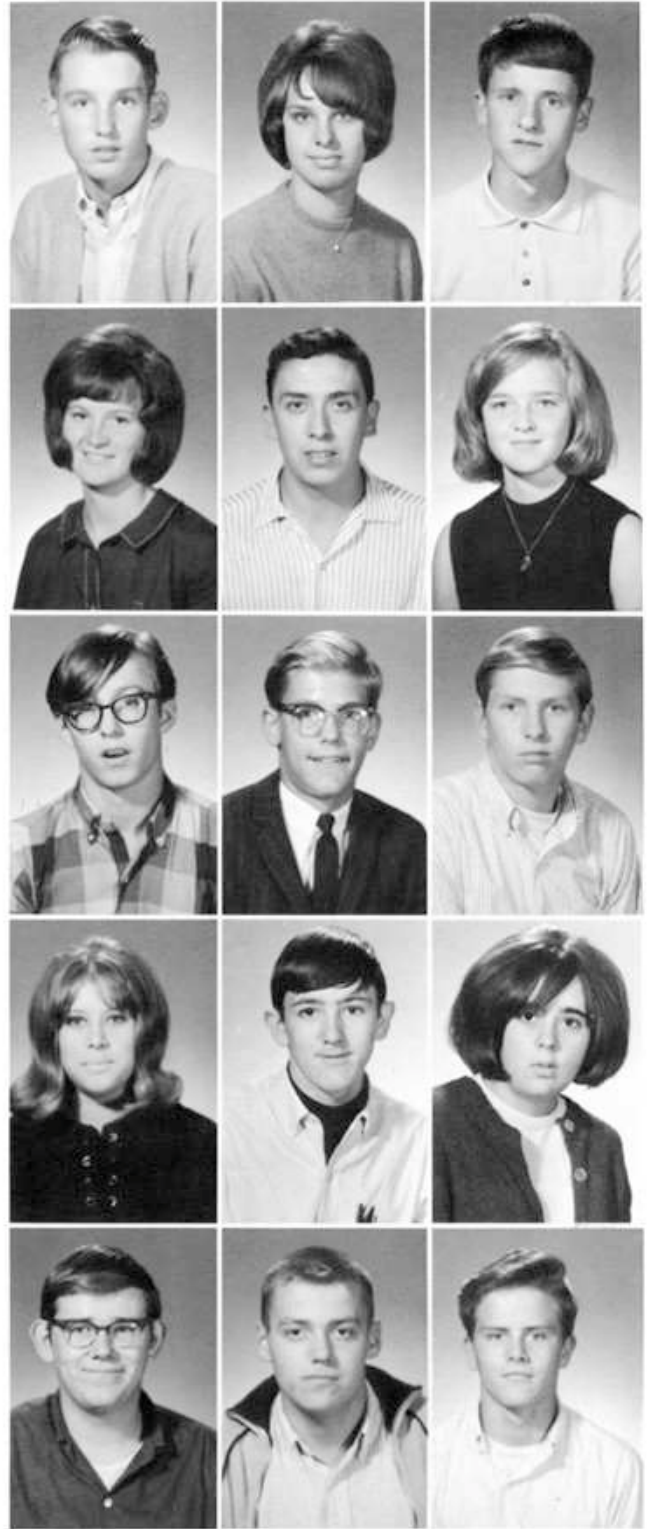


Junior Class Officers: Trisha Kendall, Secretary; Linda Carothers, President; Pat Jones, Treasurer.

Jerry Albertson  
Dennis Beals

Bill Baron  
Rae Blevins

Debby Bates  
Sue Blindt



Don Boose  
Anna Burden  
Dave Cinert  
Mary Colby  
Ray Crown

Margaret  
Braithwaite  
Carlos Calderon  
Bart Clouston  
John Cook  
Doug Cunningham

Dale Brockman  
Linda Carothers  
Jim Cmolik  
Martha Craig  
John Dooley



Dick Driscoll  
Ed Eble  
Ed Engel  
Jon Fischer  
Ed Fraser

Bruce Frey  
Larry Froehlich  
Bill Gabler  
Hal Glatzhofer  
Steve Grittner

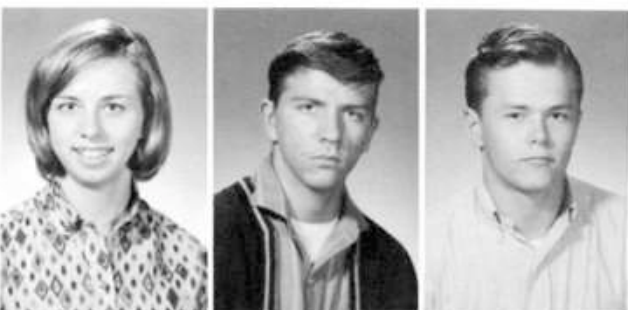
Dan Gurski  
Nancy Heitz  
Penny Hodous  
Phillip Jacobs  
Mark James



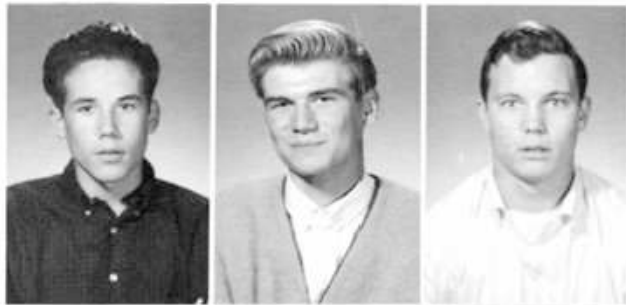
Gary Jenkins  
Herb Johnson  
Bob Johnson  
Pat Jones  
Steve Kandlik

Pat Kendall  
Marilora Kincaid  
Steve Kitcoff  
Mike Klima  
Rae Knox

Karen Kroener  
Jim Kucia  
Frank Lacek  
Jeff Laman  
Art Laramy







Joe LeClerc  
Spencer Leigh  
Stan Lemons  
Roger Lepisto  
Larry Lewis

John Liszka  
Judie McIlwain  
Sue McMahon  
Mike Meyer  
Sally Monroe

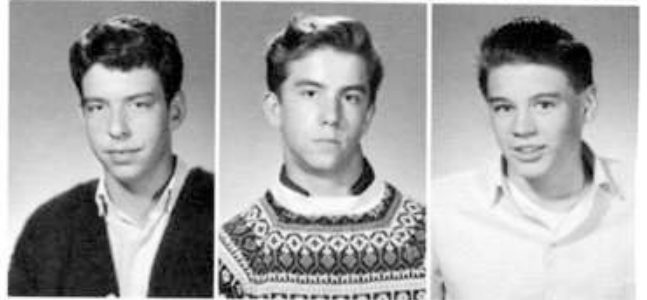
Jim Montague  
Tom Morgan  
Bobbi Moss  
Al Moudry  
Carleen Nelson

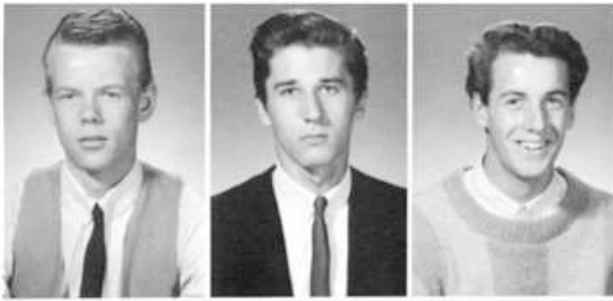


Rich Norton  
Charles  
O'Loughlin  
Judi Paulsen  
Jerry Pearce  
Pat Peters

Shirley  
Plankinton  
Gordon Plohr  
Tom Reeder  
Pam Riske  
Barb Rittgarn

Shirley Roch  
Bill Sass  
Jo Schmidt  
Don Schmoker  
Gary Seaton

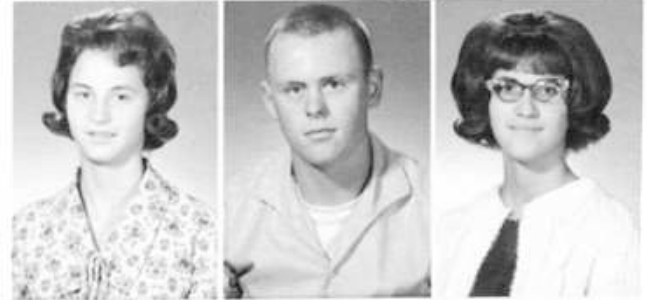




Dale Toberman  
Lynda Toberman  
Dennis Tomecek  
Tom Tomera  
Ray Vesely

Terry Wold  
Roger Warner  
Pam Wilson  
Bruce Wolffling  
Diane Woods

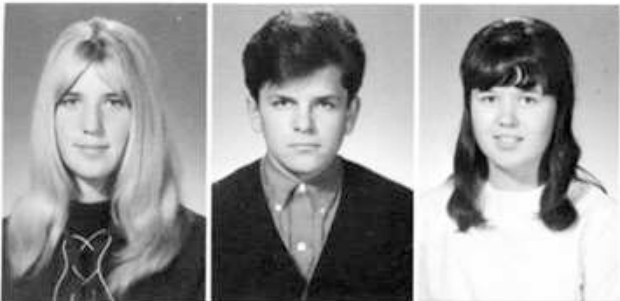
Leonard Wurl  
Audrey Yackley  
Lynne Zettel  
Sue Zinner



Tom Sheahan  
Mary Shepard  
Wendy Sikorski  
Jim Simon  
Glenn Simpson

Roy Smith  
Arlee Spence  
Bob Srail  
Jan Stackpole  
Gerri Stanek

Bob Stanley  
Jim Stanley  
Sue Szal  
Bob Taylor  
John Thomas

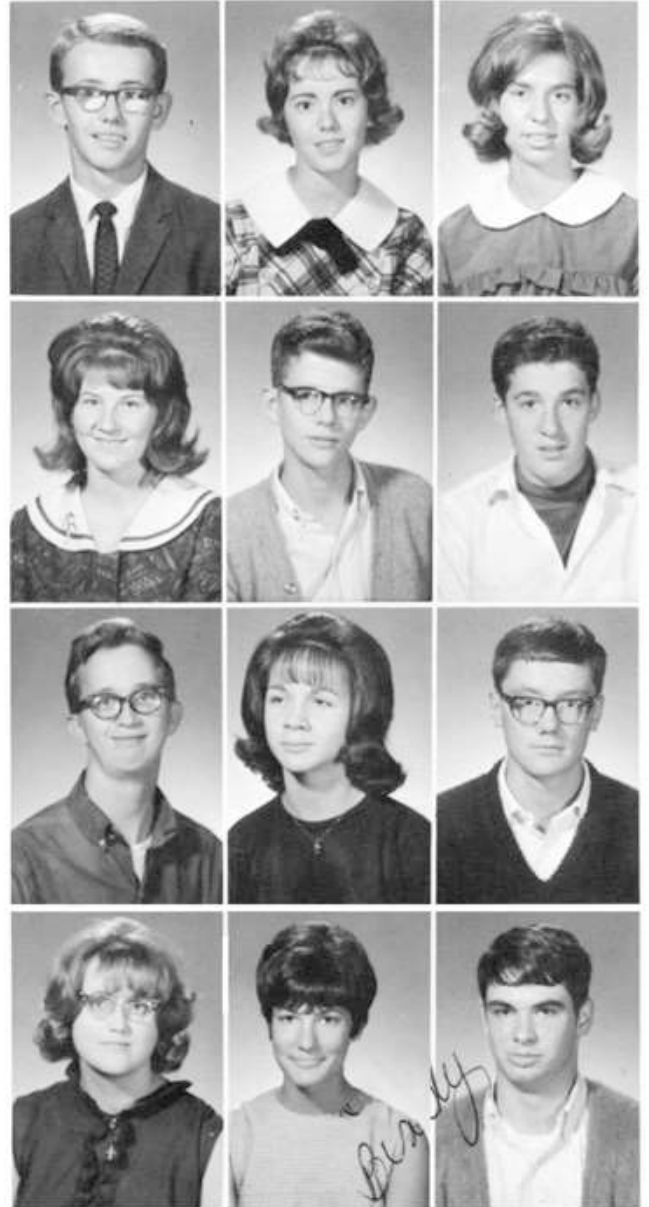






Sophomore Class Officers: (top to bottom) Roy Krueger, Vice-President; Joan Kremer, Secretary; Doug Jensen, President; Lee Hankinson, Treasurer.

## SOPHOMORES



Mike Athey  
Beth Baker  
Andy Bakken  
Sandy Bakken

Debby Beaderstadt  
Jim Black  
Bobbi Blevins  
Carol Brenner

Linda Byrd  
John Carothers  
Don Carrie  
Al Carter





Pat Cmolik  
Linda Coffey  
Steve Cook  
Sue Curtin

Tim DeChant  
Joe Delaney  
Betty Dyntera  
Ed Evans

Vernon Everette  
Frank Ferrin  
Cliff Fill  
John Forst

Dave French  
Pam Gabler  
Sherry Gamble  
Carol Gandolfo  
Brenda Getty

Gayle Gildernick  
Elmer Grunst  
Maren Hagarty  
Barb Hammer  
Lee Hankinson

Neil Hanson  
Gary Harper  
Nick Heinz  
Fred Hirsimaki  
Kathy Homan



Gary Klima  
Ellen Koba  
Keith Kraft  
Laura Krause

Joan Kremer  
Roy Kruger  
Donna Kubicek  
Jackie Kusnierz

Don Kvasnicka  
Mike LaRock  
Linda Leja  
Bonnie Liaromatis



Gary Houha  
Joe Ingram  
Agnes Jannisch  
Galen Jelskey  
Doug Jensen

Stephanie Johns  
Fern Johnson  
Verna Jones  
Lynn Kalaher  
Steve Kanaba

Kathy Kemmerling  
Kirby Kepford  
George Kilens  
Otto Kindshoven  
Judy King



Larry Lien  
 Bob Lindgren  
 Jeff Lynch  
 Jeff Mack

Leroy Marcellis  
 Dick Marshall  
 Pat Matteucci  
 Larry Maxwell

Gail Meister  
 Maria Mulacek  
 Martin Munjak  
 Cliff Murphy



Charles Nystedt  
 Diane O'Connor  
 Brenda Perry  
 Marsha Phillips  
 Liz Pipek

Gail Powers  
 Dale Reed  
 Janet Reed  
 John Reeder  
 Linda Renc

Bob Rice  
 Dean Ross  
 Dennis Ross  
 Mark Ross  
 Joanne Rott



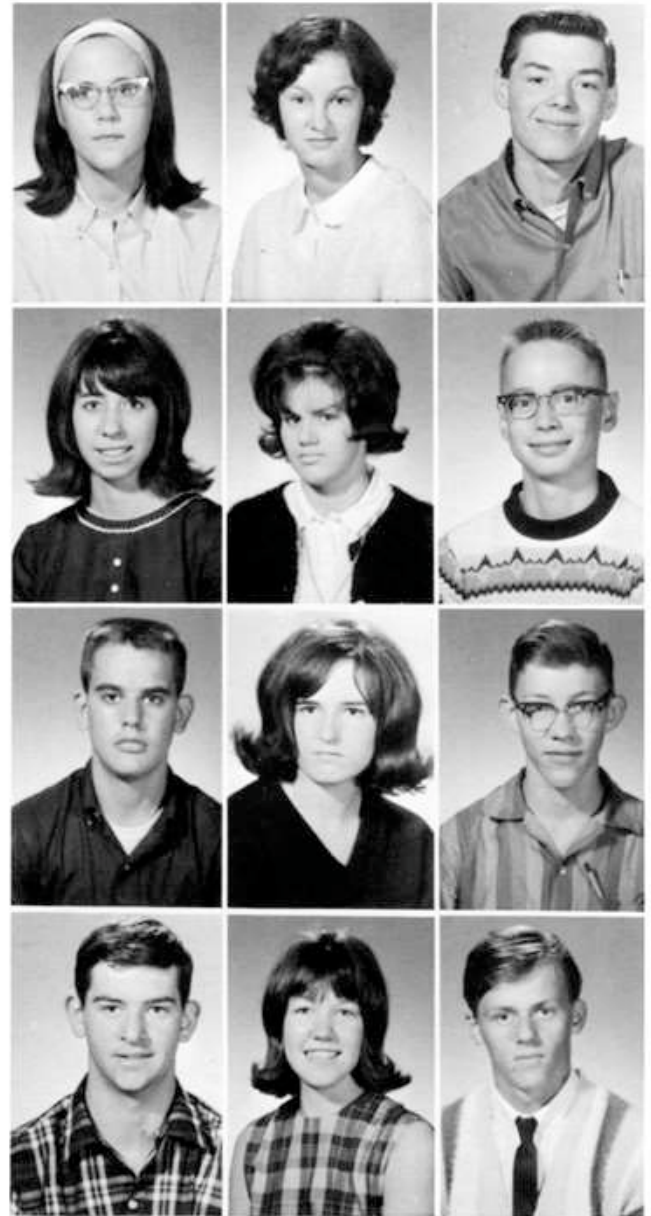


One of those frequent Sophomore discussions which are so interesting to the participants, yet incomprehensible to upper-classmen.

Ron Rychtarik  
Judy Saltis

Jerry Sedlock  
John Skalic

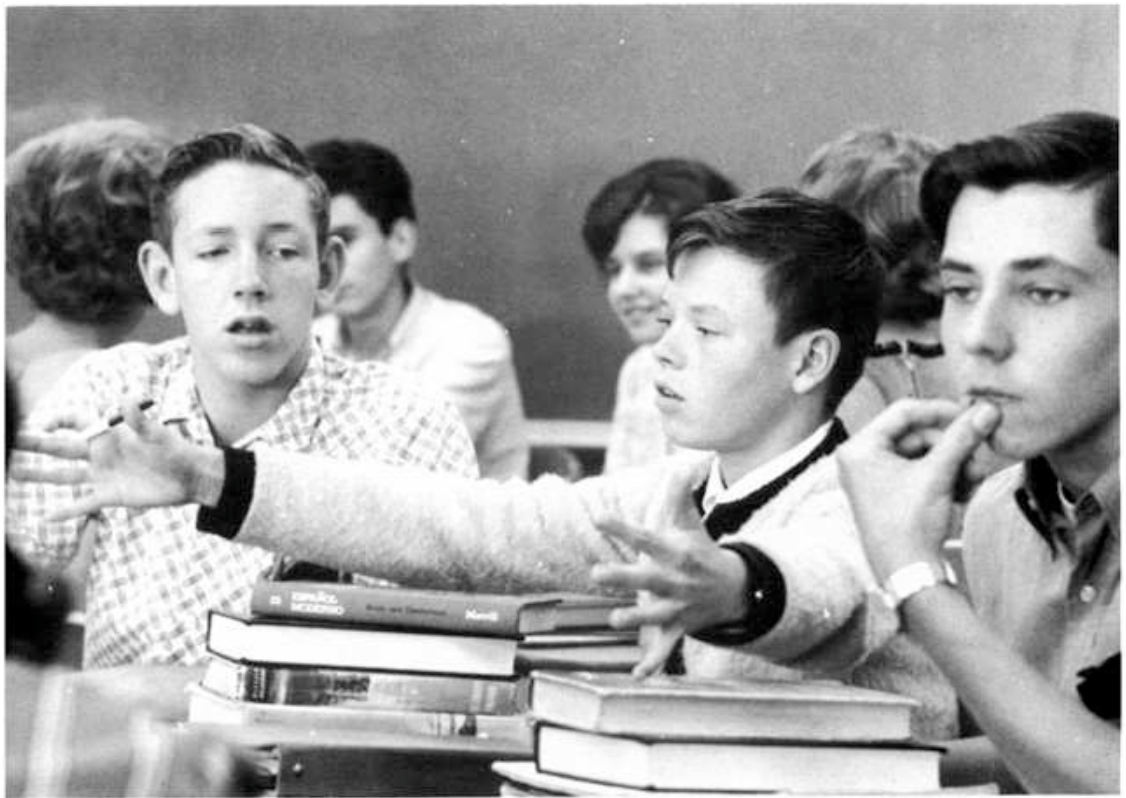
Charlene Smith  
Carolyn Stanley



Laurel Stanley  
Debbie Stansfield  
Mike Stanton  
Randy Stevenson

Cathryne Strauley  
Kathy Studeny  
Vicky Tarr  
Sue Taylor

Bill Thomas  
Bob Thompson  
Jim Tibbetts  
Wayne Troyer



A small boy with big ideas.



Rick Wheeler  
Dave Williams

Kathy Wood  
Dawn Wright

Ed Wright  
Rich Yackley



Jeff Trostad  
Daryl Van  
Kampen  
Tom Voldness

Bill Wachowski  
Jon Wells

Judy Westerhoff  
Larry Wetzel





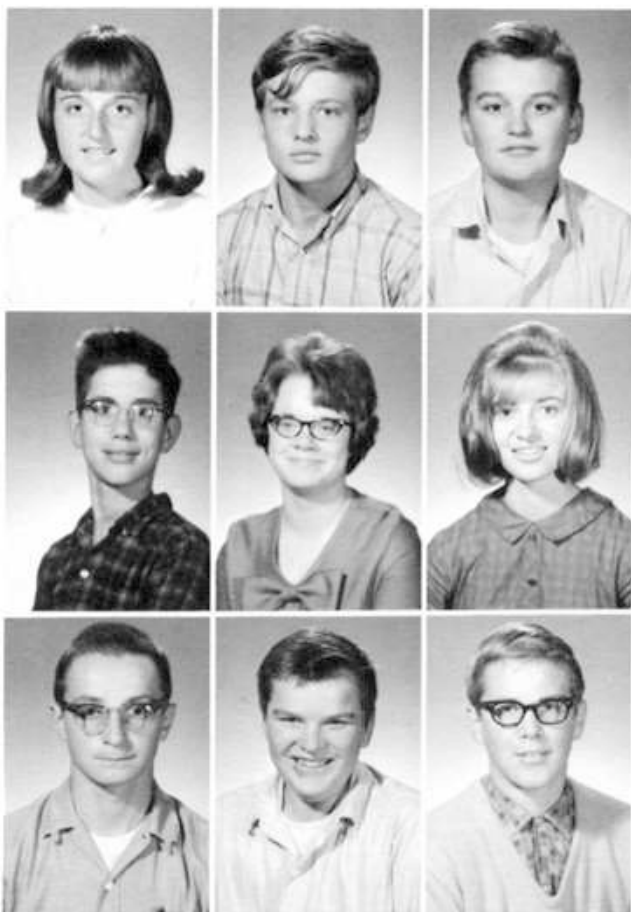


Freshman Class Officers: (seated) Pam Kassel, Treasurer; Darcy Anthony, Secretary; (standing) Andy Brubaker, President; Bill Wenning, Vice-President.

Darcy Anthony  
Walter Bahr  
Scott Bain

Bob Baldwin  
Marilyn Beard  
Charles Beckett

Randi Beckett  
Liz Blazek  
Mike Brady



## FRESHMEN

Bob Brekke  
Duane Brockman  
Fred Brogle  
Don Brooks  
Andy Brubaker

John Buss  
Karen Carney  
Diane Cinert  
Dan Cook  
Don Cook

Larry Cox  
Sue Craig  
Tony Deckard  
John Diebold  
Cathy Donahue



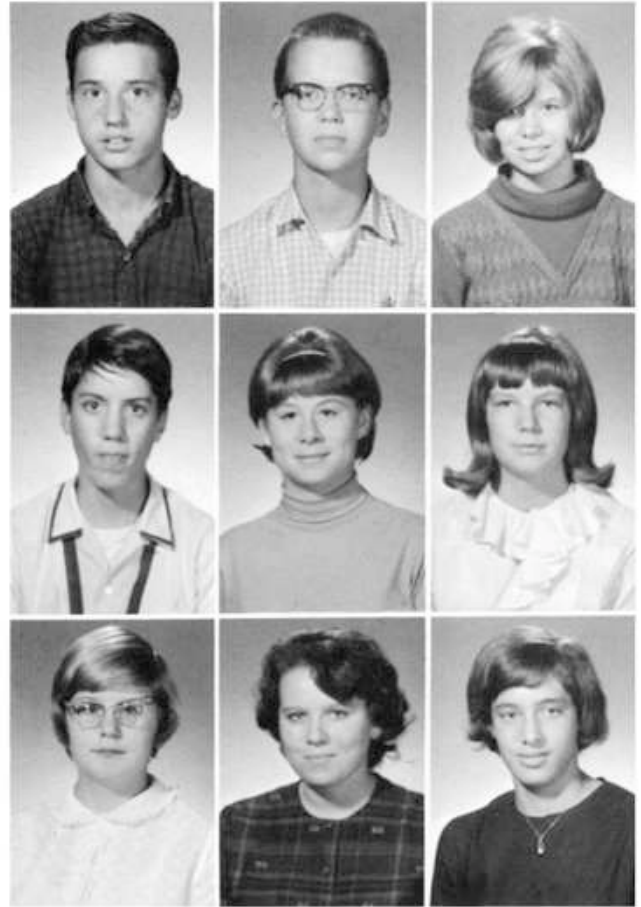




Dennis Dooley  
Gail Dudley  
Mike Earnest  
Ken Emme  
Steve Expersen

Kevin Ferrin  
Ed Florian  
Ed Forst  
Steve Franck  
Steve Fuqua

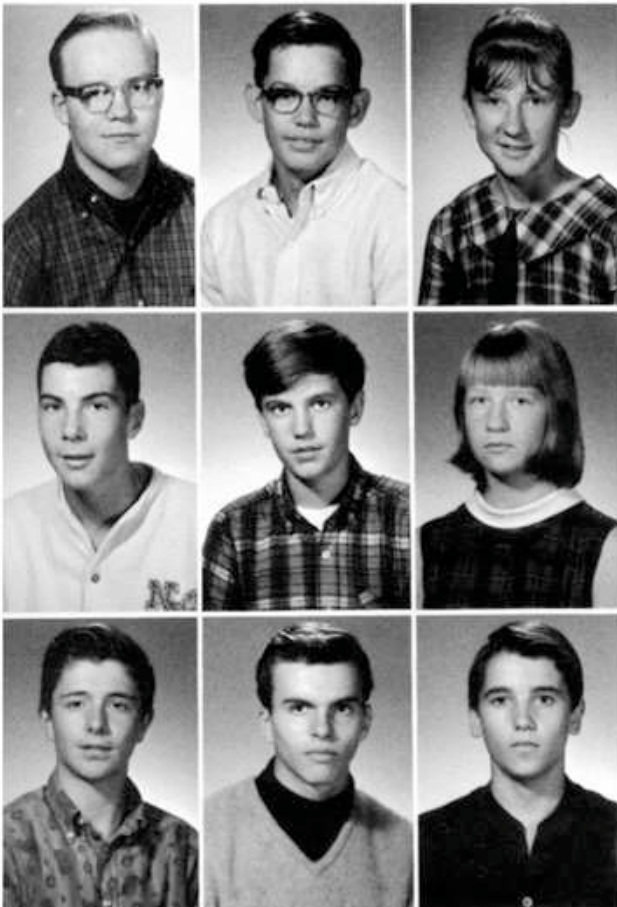
Dave Giamarino  
Mike Godek  
Ann Goodwin  
Jody Gorham  
Tom Graney



Larry Hall  
Brad Hanson  
Beth Heinekamp  
Bob Herlien  
Bill Herlien

Ryan Holzkopf  
Erica Iseminger  
Joyce Jackson  
Jill Janovsky  
Pat Jeffery

Connie Johansen  
Janis Jones  
Pam Kassell  
Bill Keller  
Ed Kendall





Lyle Minnick  
Ron Mitchell  
Craig Morgan  
Robin Morris  
Shelly Morton

Brad Moss  
Guy Moss  
Hugo Mulacek  
Phil Nystedt  
Connie O'Connor

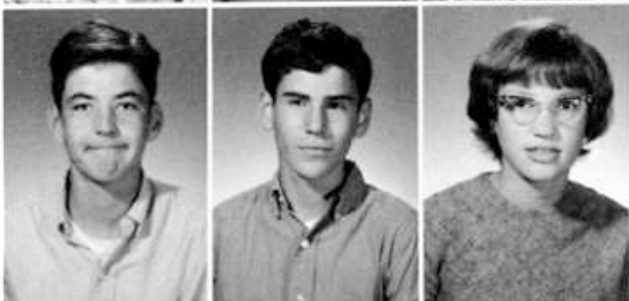
Bernie Orpin  
Dave Patz  
Merle Pechous  
Jeff Porter  
Kit Proud



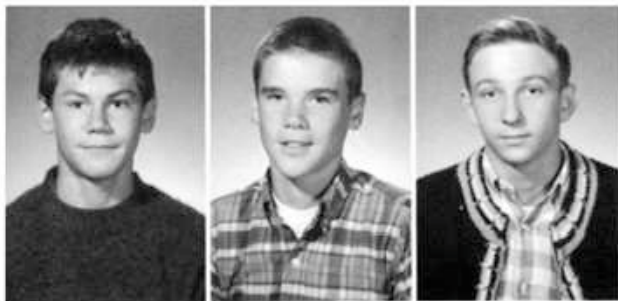
Sheldon Kincaid  
Pat Kindshoven  
Karen Kizior  
Bill Knight  
Gary Lepisto

Chuck Lewis  
Dan Liaromatis  
Don Lindemann  
Jim Mansuetto  
Cathy Marcellis

Don Marek  
Jenny Mason  
Jim McGill  
Pat McMahon  
Doug Miller







Bruce Rakosnik  
Linda Ramsten  
Tom Robinson  
Betty Rose  
Linda Saraga

Kim Schlytter  
Olga Seredynsky  
Dan Shepard  
Sue Shultes  
Bob Shultz

Ken Sloup  
Larry Smith  
Pam Smith  
Lyndi Sprietsma  
John Stample



Sheryl Stookey  
Pam Strieter  
Kathy Thomas  
Phyllis Thomas  
Bill Tinker

Dawn Tuma  
Valerie Vach  
Jane Vining  
Stan Weller  
Bill Wenning

Pam Whitfield  
Dennis Woolverton  
Dave Woods  
John Yackley  
Linda Zeleny





the 1990s, the number of people with a diagnosis of schizophrenia has increased in many countries (1).

There is a growing awareness of the need to improve the quality of life of people with schizophrenia. The World Health Organization (WHO) has developed a number of instruments to measure the quality of life of people with schizophrenia (2). The WHO Quality of Life Scale (WHOQOL) is a self-rated measure of quality of life that has been used in a number of studies (3). The WHOQOL is a 26-item scale that measures quality of life in terms of physical, psychological, social, and spiritual domains. The WHOQOL is a self-rated measure of quality of life that has been used in a number of studies (3).

The WHOQOL is a self-rated measure of quality of life that has been used in a number of studies (3).

The WHOQOL is a self-rated measure of quality of life that has been used in a number of studies (3).

The WHOQOL is a self-rated measure of quality of life that has been used in a number of studies (3).

The WHOQOL is a self-rated measure of quality of life that has been used in a number of studies (3).

The WHOQOL is a self-rated measure of quality of life that has been used in a number of studies (3).

The WHOQOL is a self-rated measure of quality of life that has been used in a number of studies (3).

The WHOQOL is a self-rated measure of quality of life that has been used in a number of studies (3).

The WHOQOL is a self-rated measure of quality of life that has been used in a number of studies (3).

The WHOQOL is a self-rated measure of quality of life that has been used in a number of studies (3).

The WHOQOL is a self-rated measure of quality of life that has been used in a number of studies (3).

The WHOQOL is a self-rated measure of quality of life that has been used in a number of studies (3).

The WHOQOL is a self-rated measure of quality of life that has been used in a number of studies (3).

The WHOQOL is a self-rated measure of quality of life that has been used in a number of studies (3).

The WHOQOL is a self-rated measure of quality of life that has been used in a number of studies (3).

The WHOQOL is a self-rated measure of quality of life that has been used in a number of studies (3).

The WHOQOL is a self-rated measure of quality of life that has been used in a number of studies (3).

The WHOQOL is a self-rated measure of quality of life that has been used in a number of studies (3).

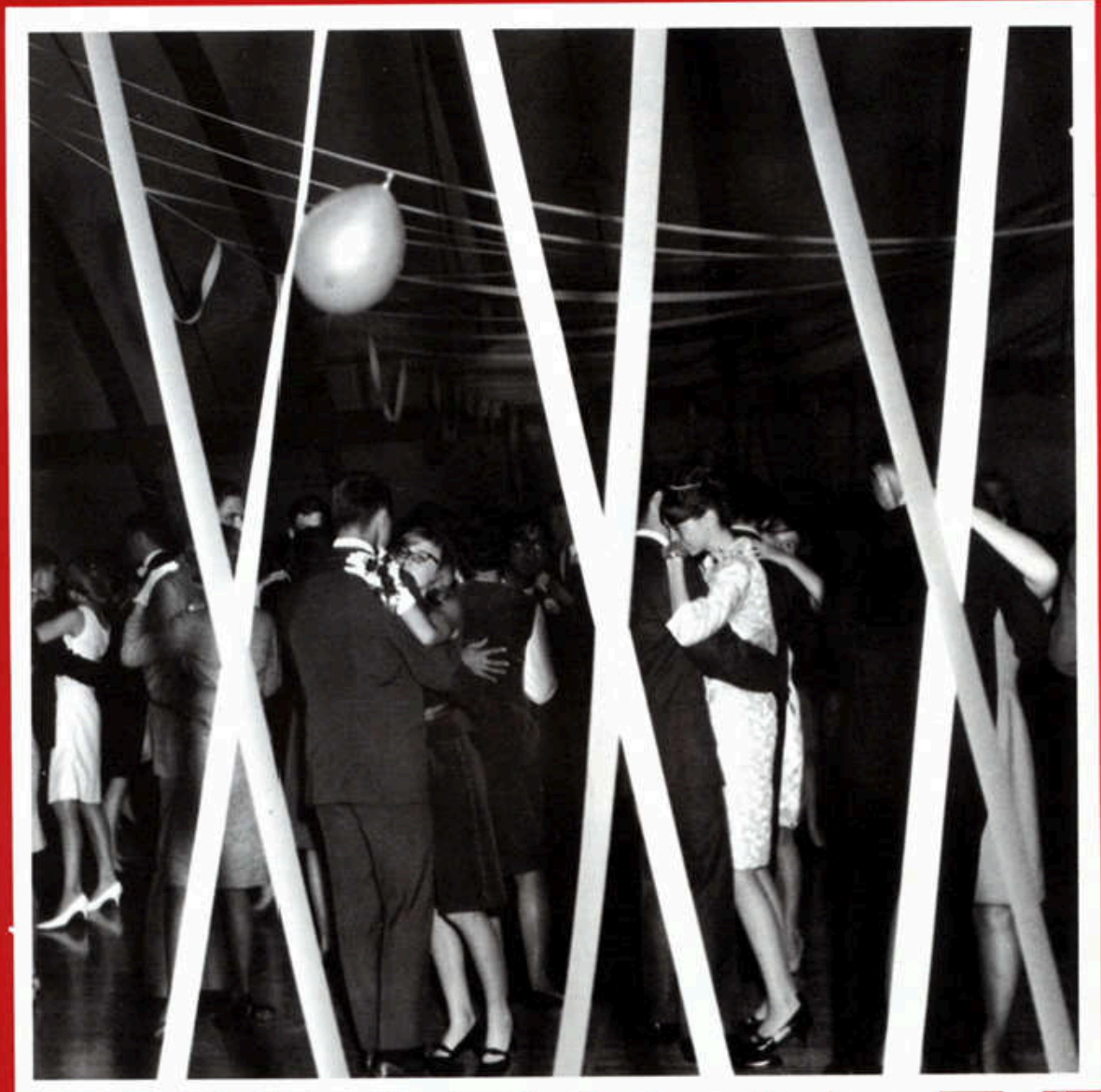
The WHOQOL is a self-rated measure of quality of life that has been used in a number of studies (3).

The WHOQOL is a self-rated measure of quality of life that has been used in a number of studies (3).

The WHOQOL is a self-rated measure of quality of life that has been used in a number of studies (3).

The WHOQOL is a self-rated measure of quality of life that has been used in a number of studies (3).

The WHOQOL is a self-rated measure of quality of life that has been used in a number of studies (3).



# ACTIVITIES



## Through a Great Play is Seen the Reflection of Oneself.

This year's Curious Savage was such a play. Take a middle-aged woman who has suddenly realized the joys of being foolish, add about ten million dollars and her three selfish adult children; then simmer slowly in the institutional home of "The Cloisters." Suddenly it seemed that the gentle inmates of "The Cloisters" were actually the only ones who knew how to live, and that Mrs. Savage's children were part of an insane outside world.

The Curious Savage was produced under great difficulties. Demolition crews anxiously waited to wreck the stage to make way for construction. Mr. Rapp was unexpectedly hospitalized, leaving Mr. Mulcare as director, with Mrs. Michael and Mr. Palzer assisting him. Although the cast was quite independent of supervision, they were very experienced and did a creditable job.

1.



3.



2.



4.



5.



(1) Having make-up put on can be an exhausting business for the male members of the cast. (2) The exhaustion is occasionally relieved by the presence of the make-up crew. (3) Barb Kubes as Mrs. Savage stubbornly refused to tell her greedy "children" where her money was hidden. (4) Paul Havenar explained the relationship of the "Cloisters" to the outside world for Mrs. Savage. (5) The important values of life ignored by the world were realized in "The Cloisters." (6) This select society represents to an observant audience the attitudes so essential to a thoughtful, feeling person.

6.





## Lisle's Palace of Vaudeville was the Result

of a two-night transformation of the junior high school gym. Representing a bygone, but not forgotten era were vocal groups, musicians, dancers, and skits. As Mary Beth Pechous narrated the history of vaudeville and the rise of legitimate theater, bands and singers were witnessed. As long as there is humanity, there will be variety acts, as Lisle's local talent so ably proved.



### Cast List — Vaudeville '65

Quartet: "The Four Pearls"

Howard Bradley

John Catlin

Dwight Hoffman

Dave Williams

Guitar Duet: John Catlin & Doug Moore

Organ Solo: Bob Thompson

Vocal Duet: Rae Knox & Sue Laramie

Vocal Solo: Howard Bradley

Jazz Dance: Judy Zekl

Combo: "The Malibus"

Al Carter

Ray Crow

Jerry Pearce

Loren Sirko

Jan Stackpole



(1) The "Palace's" host for the evening, Mary Beth Pechous. (2) Rich Mason provided a comic interlude with his trombone. (3) Silvertoe's cast did a parody on "Goldfinger" and James Bond. (4) Representing the singers of a past era was Howie Bradley.

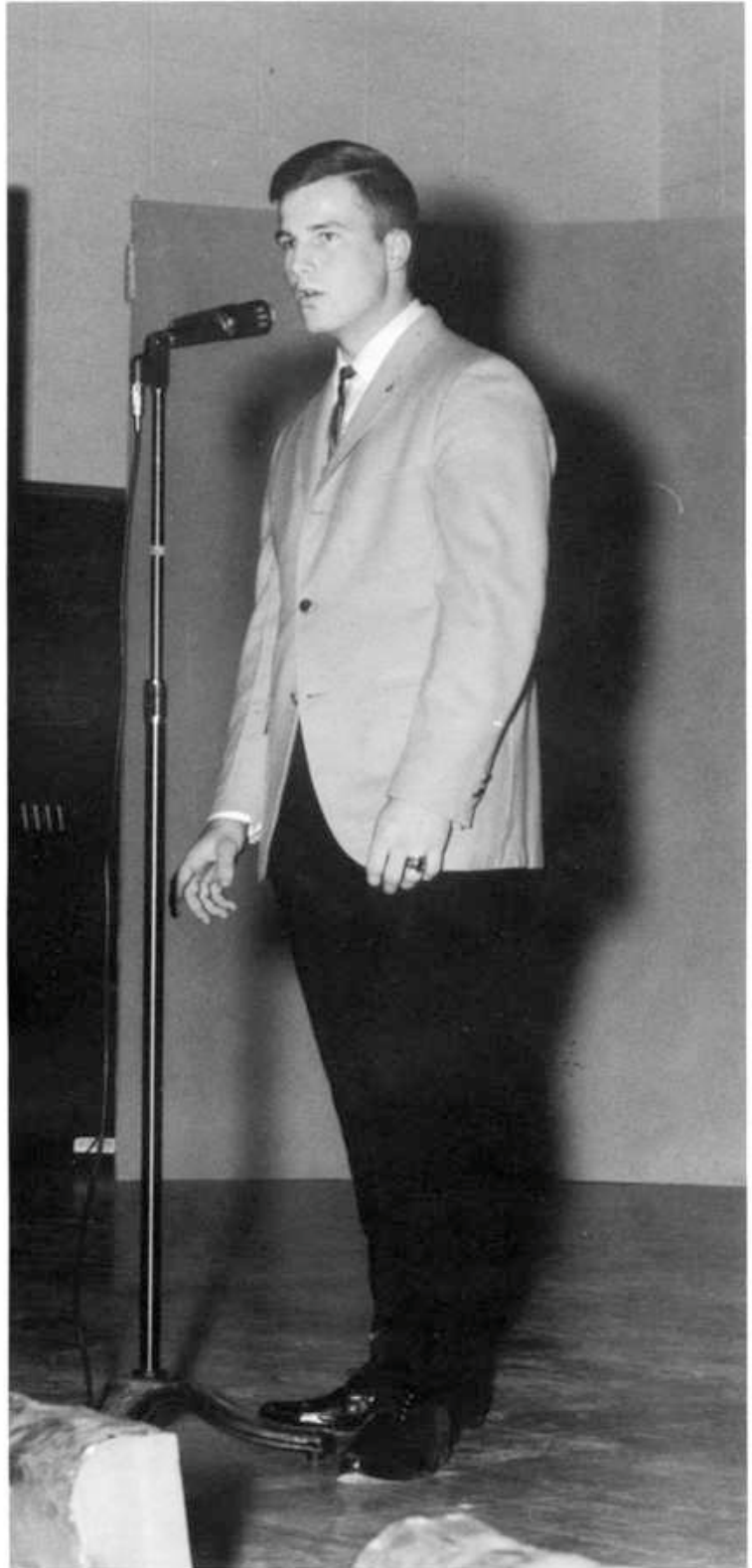
2.

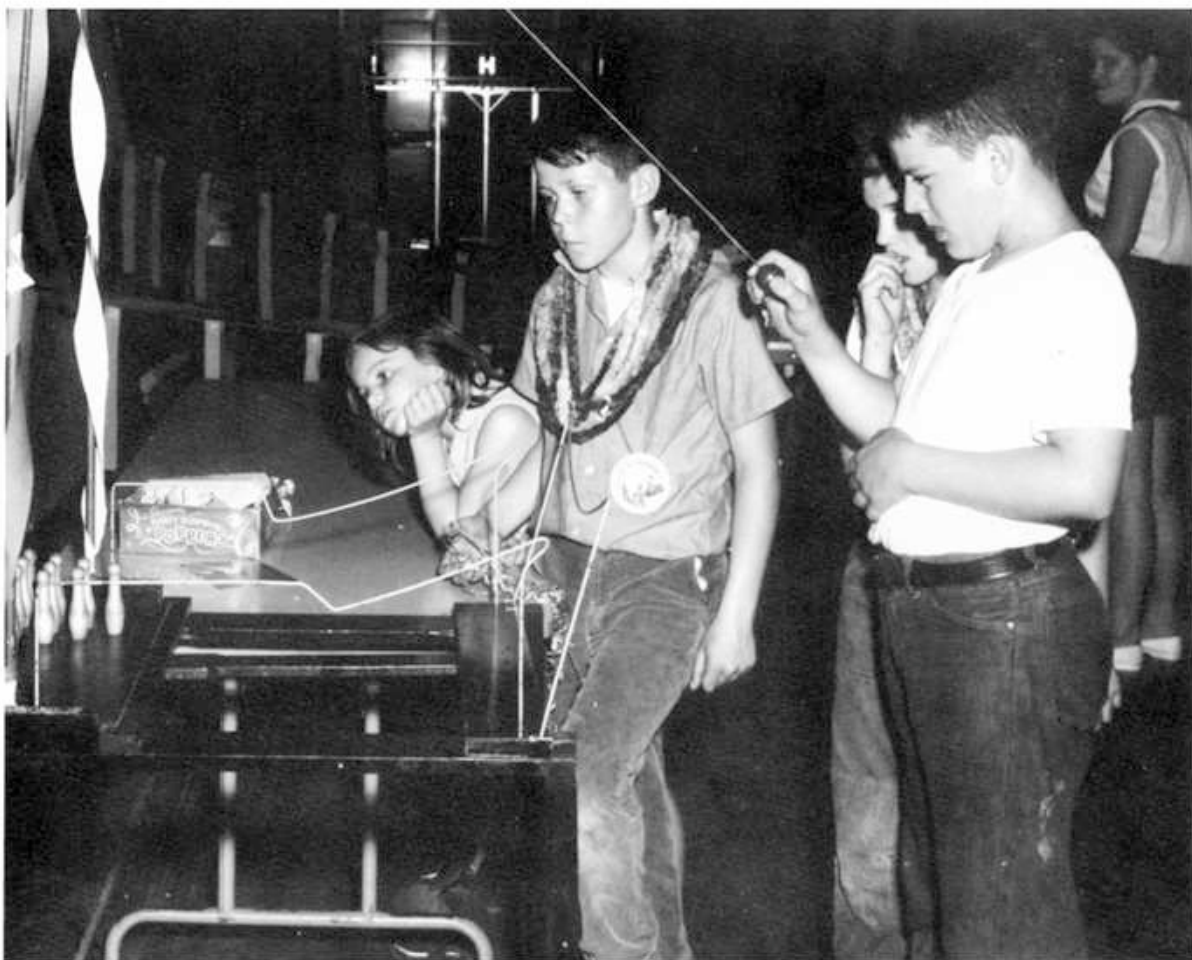


3.



4.





Jamboree booths required great skill . . .

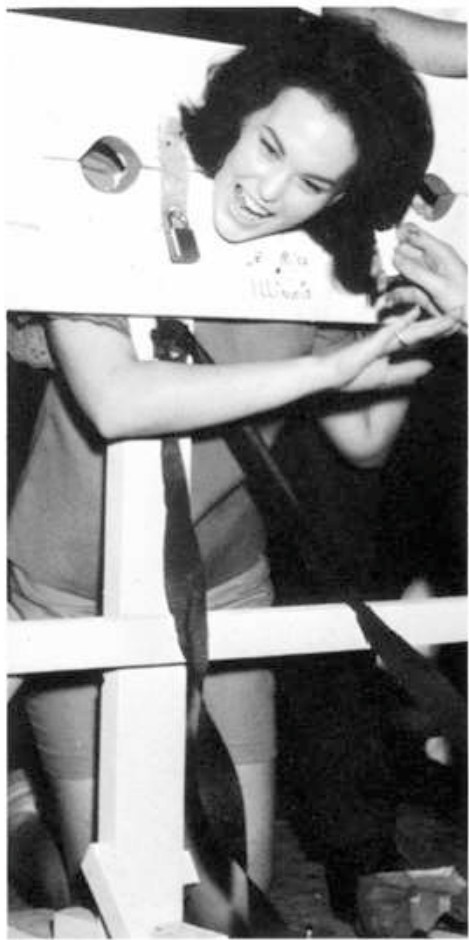


Intense concentration . . .



And precise aim.





While some students, Helen Barta among them, spent their time imprisoned in the stocks,

## Balloons, Crepe Paper, tables, and a lot of imagination made

the high school gymnasium a carnival of fun offering to test skill, satisfy appetites, and appease desires for culture. Opportunities were as varied as the clubs. The Spanish Club had hot taccos and tamales to feed those who forgot about lunch. For those more artistically inclined, the Class of '65 offered an instant modern art machine (add only paint.) For the revengeful, the traditional stocks were provided where, for a minimal fee, anyone less fleet-footed than the Seniors could be locked up. After twelve happy, money-making hours, delighted clubs paid their Student Council tax and packed up their booths until next year.



Others, such as Steve Kitcoff, tried to ring a shapely Senior's leg.





Once the long-awaited dance finally began, some of the awkwardness of sophistication wore off as Paul Havenar and Judy Zekl shared a joke.

The Junior-Senior Prom was the highlight of the year. For Juniors

it

means hours of preparation and planning culminating in the final beautiful masterpiece. For the Seniors it symbolizes the final and glorious end of four years. It is a weekend eagerly anticipated, dazedly experienced, and fondly remembered for years to come. For one magical night the world is a fairyland as boys wear their first tuxedos and girls have their first experience wearing floor-length gowns and long white gloves. It is only one night, but it is a night never forgotten.

This year's Prom was held at Lombard Commons. To enter the land of "Moonlight Magic," the couples passed through an arbor decorated with roses. A few tables on the sides were separated from the dance floor by a short white picket fence. As the band played the couples danced by candlelight. For four hours the spell lasted. The facade of sophistication was dropped early the next morning as the bleary-eyed students set out for Warren Dunes. Although the dreary dawn was unpromising, by the time the bus reached the Dunes the day had become hot and sunny. Red and peeling bodies bore painful testimony to the strength of that sun Monday morning. Thus ended Prom: sandy, sore, but most significant!

Music was provided by Jim Bestman and his band.

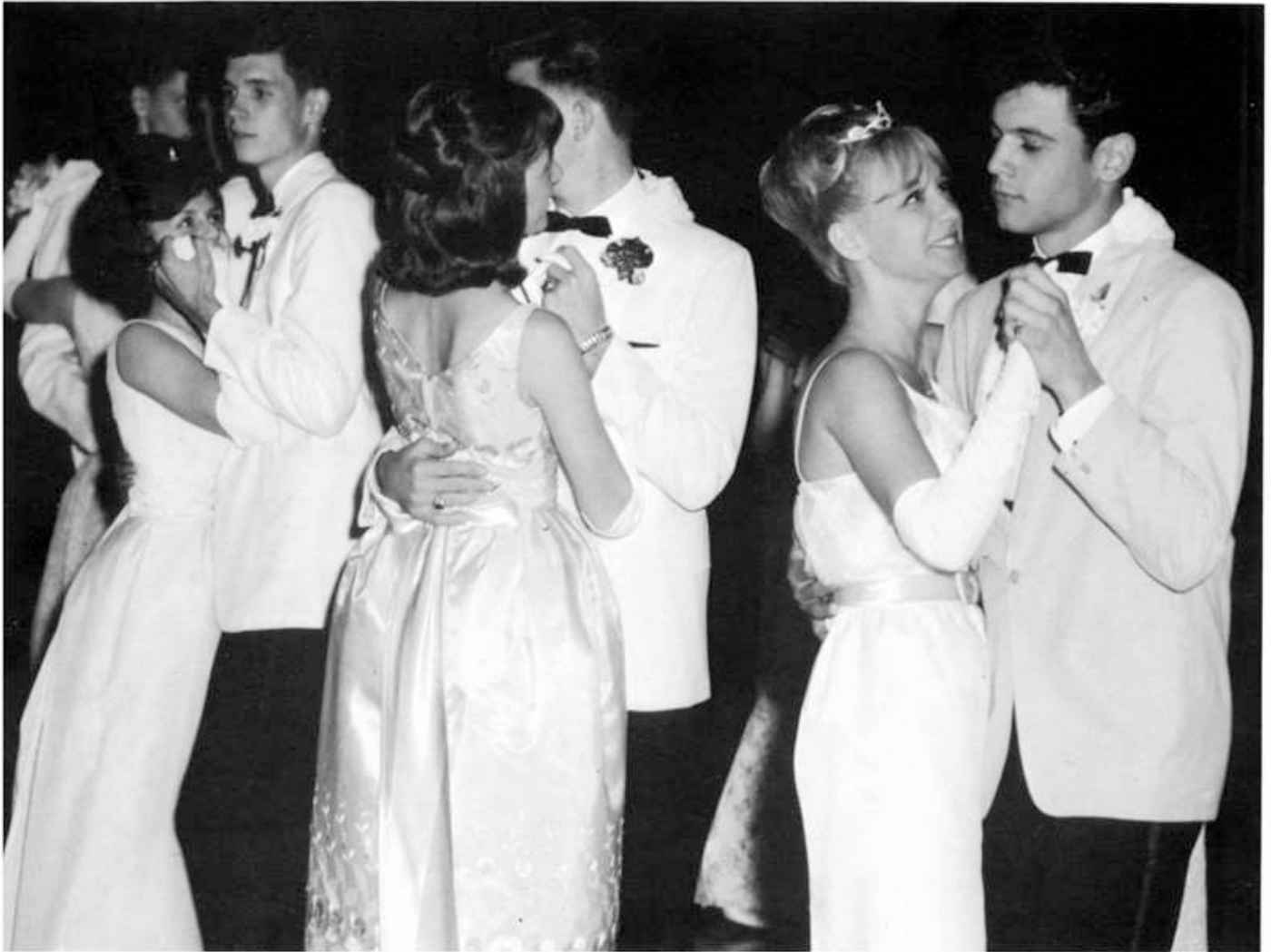




Between or during fast dances many couples sat at the tables along the side to rest weary feet.

Cake, punch, and an assortment of cookies were served buffet style in an adjacent room.

Mary Kowalczyk and Ralph Caliendo, Sue Reasoner and Boo Luther, and Mike Sikorski and his date, among other couples, danced to a medley of songs played by the band.





# Varsity Football: A Season of Unfulfilled Hopes

This was a discouraging year for the team—hopes and aims were high, yet were unattained. The first game against Mooseheart was a learning process. Inexperienced against the more skilled team made a loss almost inevitable. After the initial defeat came four more losses. Nevertheless, a large crowd hopefully jammed the stands to watch the Homecoming game against Plano. With a spectacular 80-yard run, Mike Williams scored the first touch-down and win of the season. After this high point, the team, although playing harder and scoring more, was unable to capture another victory. Yet, the full measure of a football team is not the win-loss record. There is also the individual attainment. Each boy gets the self-satisfaction of doing what he's been instructed to do before the game; in blocking, in tackling, and in passing. Some of it's hard to do, some of it takes courage—and this, after all, is what really counts—trophies tarnish, glories dim, but what the individual has learned is what is permanent. In this, the Varsity team has had a successful year.

The pass is high and wide; with a final surge of energy, Mike Sikorski leaps to intercept it.



First Row Top: Gary Tsukuno, Ed Eble, Dan Proud, Bruce Frey, Gary Jenkins, Mark James. Row 2: Mike Sikorski, Bill Adamec, Bill Gabler, Jim





**1965 Football**

Mooseheart	0—32
Sandwich	0—21
Maryville	0—38
Herscher	0—24
Plano	6—0
Yorkville	12—28
Marseilles	0—48
Lemont	0—56



The fumble is picked up by Mike Williams as he fights off the tackle.

Montague, Ron Hall, Jerry Pearce. Row 3: Coach Thompson, Jeff Lynch, Larry Murdock, Mike Williams, Jerry Albertson, Doug Cunningham, Jeff Mack, Coach Bushdiecker.



Coaches Bushdiecker and Samide emphasize a play to Jeff Lynch.



Varsity player Bill Gabler races with a Plano lineman for the ball.

Fourth down—five yards to go—Lisle tackles frustrate an attempted Plano run.







Bill Adamec drives up the field behind the Lisle blockers.

On Dad's day the proud football fathers stand before the bleachers.





The Lisle ball carrier fights off two Plano tackles.

Thirty-two boys came out for Frosh-Soph Football in August. For the Freshmen this was a unique experience. The long hours of practice and training each week, plus the Saturday games, required more discipline than most boys were accustomed to. Learning to take orders, practicing numerous plays and working to make a team took time. This year the team gained the experience so essential to build a winning team next year.

Andy Brubaker makes a break for a Lisle touchdown.







Helmets clash, bodies thud, and cleats dig in, as Lisle and Plano linemen struggle for possession of the ball.



A Lisle defender breaks up a Plano pass.

**Frosh-Soph team members**—Row 1: Dave Woods, Bob Baldwin, Bob Brekke, Brad Moss, Kim Schlytter, Ed Forst, Andy Brubaker, Bruce Rakosnik, Larry Hall, Sandy Weller, Bill Wenning. Row 2: Ed Wright, John Forest, Mike Brady, Scott Bain, Tony Deckard, Don Lindemann, Lyle Minnick, Phil Nystedt, Al Carter, Jim McGill, John Reeder. Row 3: Nick Heinz, Dave Williams, Mike Stanton, Bob Lindgren, Bill Thomas, John Buss, Dwayne Brockman, Mike Godek, Ed Kendall, Bernie Orpin, Cliff Murphy, Ken Slope, Coach Samide.



## Cheerleaders led The



By the end of a windy fall day, cheerleaders, as well as the team, begin to show the effects of the sport.



Sue Williams lets out a roar for the Lisle Lions.

Doing the splits are Sue Williams, Linda Carothers and Beth Pechous—Captain; standing are Diane Woods, Holly Minnick and Anna Burden.





## School In Pep and Enthusiasm

A superabundance of school spirit characterized these devoted girls who nobly follow the boys, in the call of duty, of course, wherever and whatever they played — be it football, basketball, or even occasionally track. This year's self-sacrificing varsity squad was Anna Burden, Linda Carothers, Holly Minnick, Mary Beth Pechous, Diana Woods, and Sue Williams with Alternate Pat Peters. Darcy Anthony, Pam Gabler, Barbara Hammer, Ellen Koba, Lyndi Sprietsma, Joan Kremer, and the alternate, Pam Whitfield, made up the frosh-soph squad. Mrs. Dilacova was the sponsor for the two squads this year. Proof of the varsity skill was amply shown when they brought five ribbons back from cheerleading camp. A first, a second, two thirds, and an honorable mention were won against tough competition from a four-state area. Throughout the following year these cheerleaders continued as an essential part of sports, leading spectators in cheering at games — through victories as well as defeats.



1965-66 alternate cheerleaders are Pat Peters — Varsity and Pam Whitfield — Frosh-Soph.



The Frosh-Soph cheerleaders from left to right are: Darcy Anthony, Barb Hammer, Pam Gabler — Captain, Ellen Koba, and Lyndi Sprietsma.

Quarterback Dan Proud discussed plays with Coach Bushdiecker



## Homecoming 1965

Mike Sikorski successfully blocked an attempted pass by Plano



Before the hard-fought game the Lisle Lions charged through a column made by the band and cheerleaders.







Homecoming day was a parade of floats . . .

music by the band . . .



and the yearbook's Pancake breakfast.



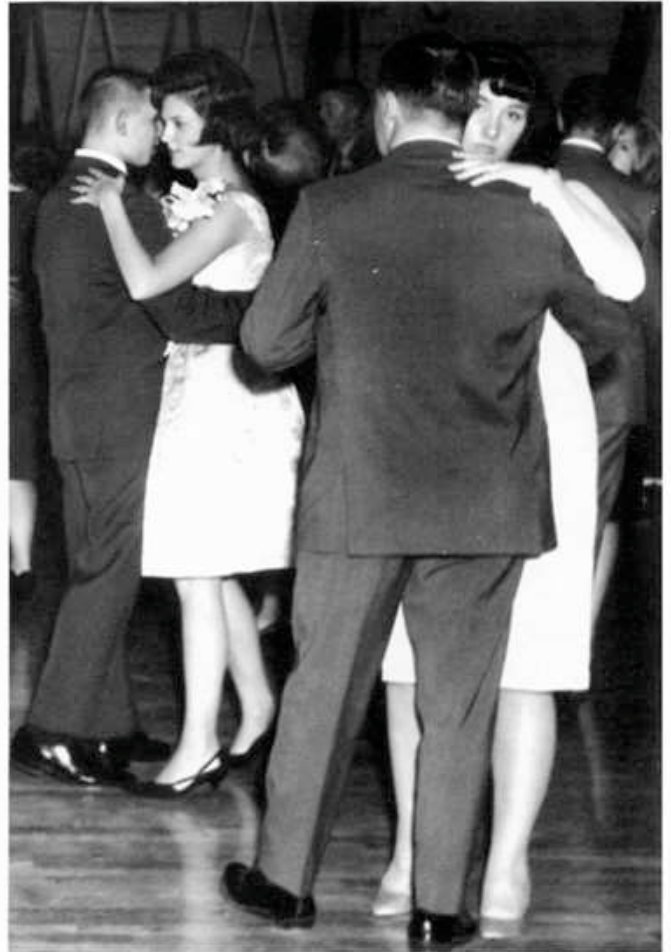
## A Circus Atmosphere Pervaded



The Homecoming Court and their escorts.

A few dances later the floor began to fill . . .

As the music began, couples hesitantly started dancing.





## the School as a Homecoming

"Under the Big Top' began. Under an aura of blue and white crepe paper, the colors of each class: red for seniors, gold for juniors, brown for sophomores, and green for freshman, mingled on Class Color Day. Queen Mary Kowalczyk was crowned during Friday's Pep Assembly. Less austere traditions were observed when the senior girls and senior boys scrimmaged in a football game of their own. That night after a breathless Snake Dance and riotous Bonfire, students returned to the float building centers to work through the night with napkins and chicken wire.

As exhausted workers saw the completion of their floats, Saturday dawned amid the aroma of the Yearbook's Pancake Breakfast. A long parade of floats, cars, the band, and curious kids on bikes was interrupted by the wailing sirens of fire trucks answering what later was discovered to be a false alarm.

In the crisp fall afternoon, Plano kicked off to Lisle. The long struggle was resolved when Mike Williams ran 80 yards on an intercepted pass for a touchdown and a Lisle victory, 6-0. Halftime was jubilantly celebrated by the band's show, the school song, and a parade of floats. For the second consecutive year the Class of '66 won first prize in float competition. Tired, but thrilled, Lisle students celebrated their victorious Homecoming at the dance that night.

until halfway through, the formality wore off as the crowded dance floor proved.



Queen Mary Kowalczyk and escort began the court dance.

As the last dance began, Homecoming, all its glories, its happinesses, its thrills, and its anguishes, ended.



In the dim light couples poured over candy hearts, searching for those with appropriate labels.

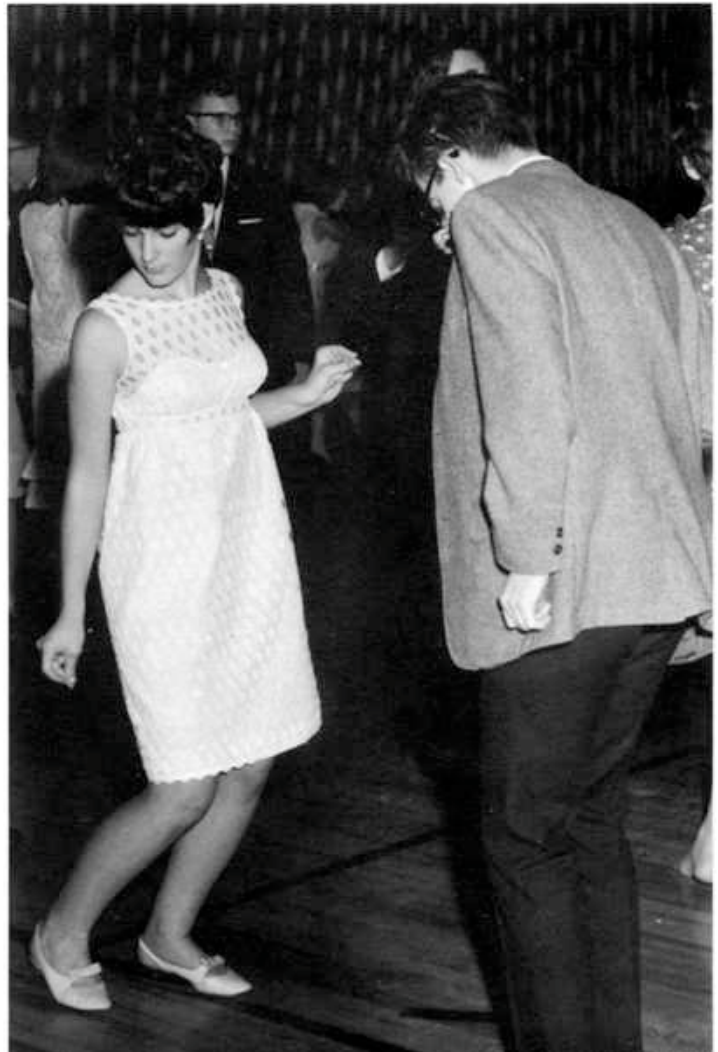


The F H A Turnabout Dance was a dance of hearts—from the heart shaped candy boxes and red paper lace heart decorations to a large crepe paper heart frame used for photographs of couples. A large turnout, as is usual for "girl ask boy" affairs, danced to the music of the "Shadows."

... other couples, like Carol Brenner and Pat O'Connor dance.



While Suzanne Sprietsma and Dan Proud talk . . .





Although Dale Reed dances alone,



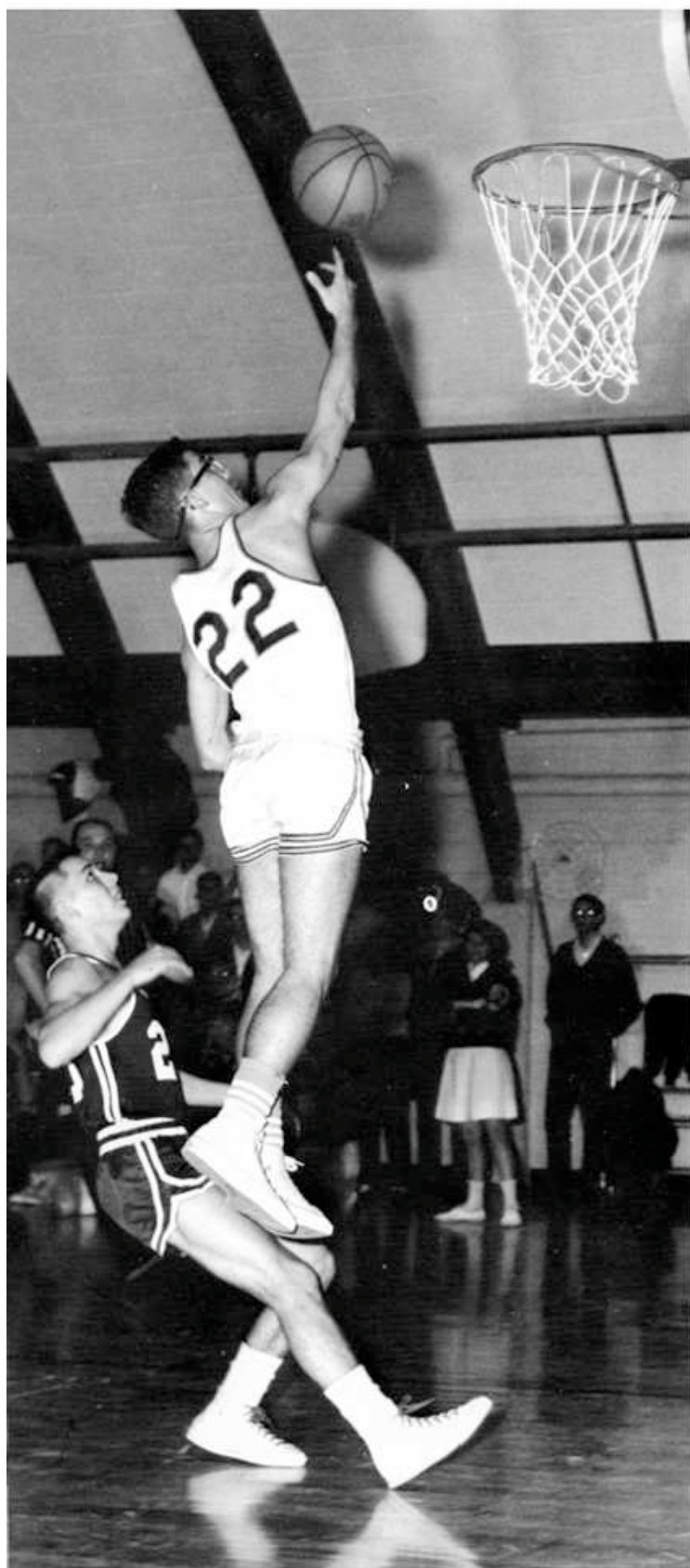
Joan Kremer and Galen Jelskey do fast dances together.



During slow dances there are those who talk, those who joke, and there are those who, like Nick Heinz and Sue Taylor, simply dance.

With mistletoe hung from the ceiling, doors wrapped like packages, and a frosted Christmas tree in the dimly lit lobby, the Social Committee put on the Student Council Christmas dance. Music by the "Malibus," punch, and cookies made "Winter Fantasy" a successful dance.





Using the coordination and skill developed in weeks of practice, Dan Proud makes the lone shot every player dreams of.

The victory against Plano gave a happy beginning to the basketball season. The following games were a succession of hard-fought losses. Bill Roge, one of the two lettermen from last year, was injured only a few weeks after the season began. With him, the team lost its tallest player and best rebounder. A series of losses seemed impossible to break; yet each game brought renewed hopes. Finally, in a conference game against Lemont, a precious victory was won with the close 66-63 score. The rest of the season brought defeat and the loss of Dan Proud with a sprained ankle. Inexperience and injuries made this a losing year for the varsity team. However, for each game there was a large crowd, cheering the team to play to the best of their ability. It seemed as though the crowd never gave up, even when those-most-directly-involved sometimes did.



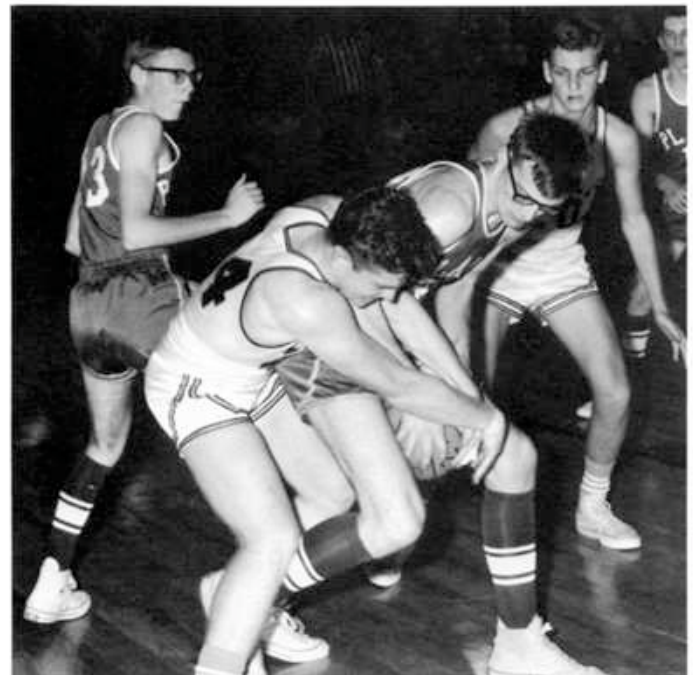


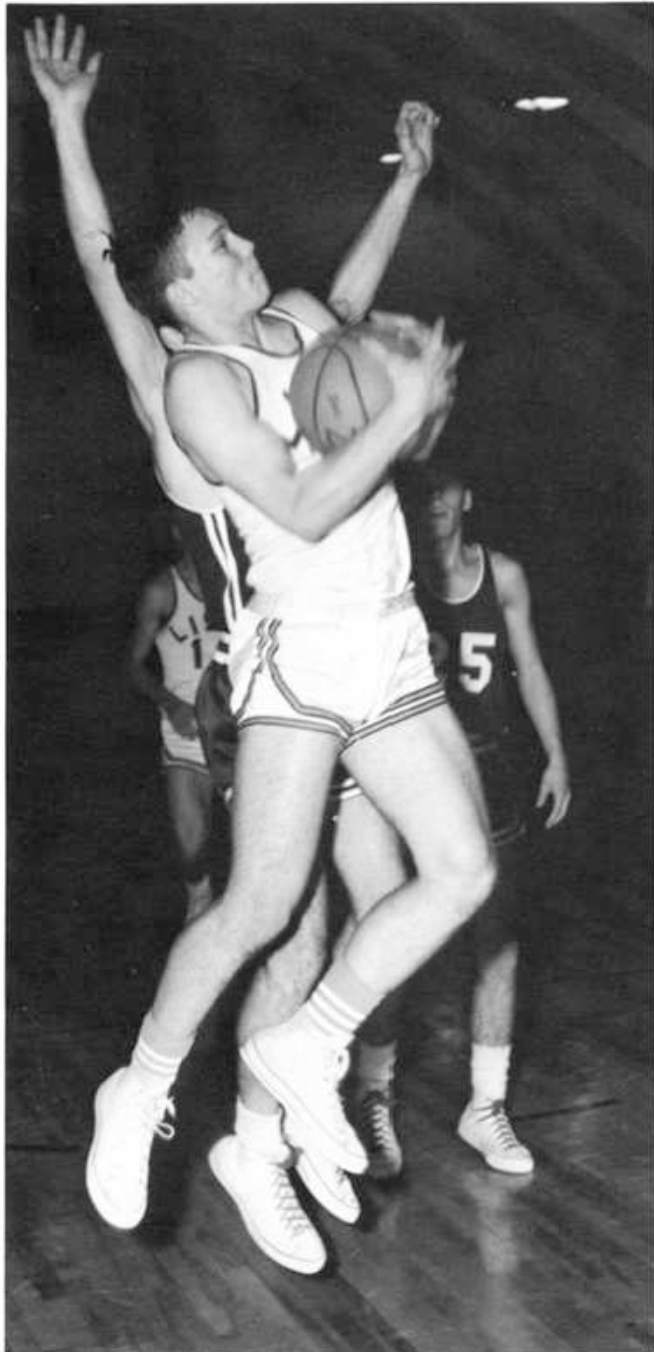
Coach John Ciesielski plans new strategy during time-out.

The rivalry is fierce as Proco and Lisle battle for the ball.



Art Laramy fights to tie a Plano ball.





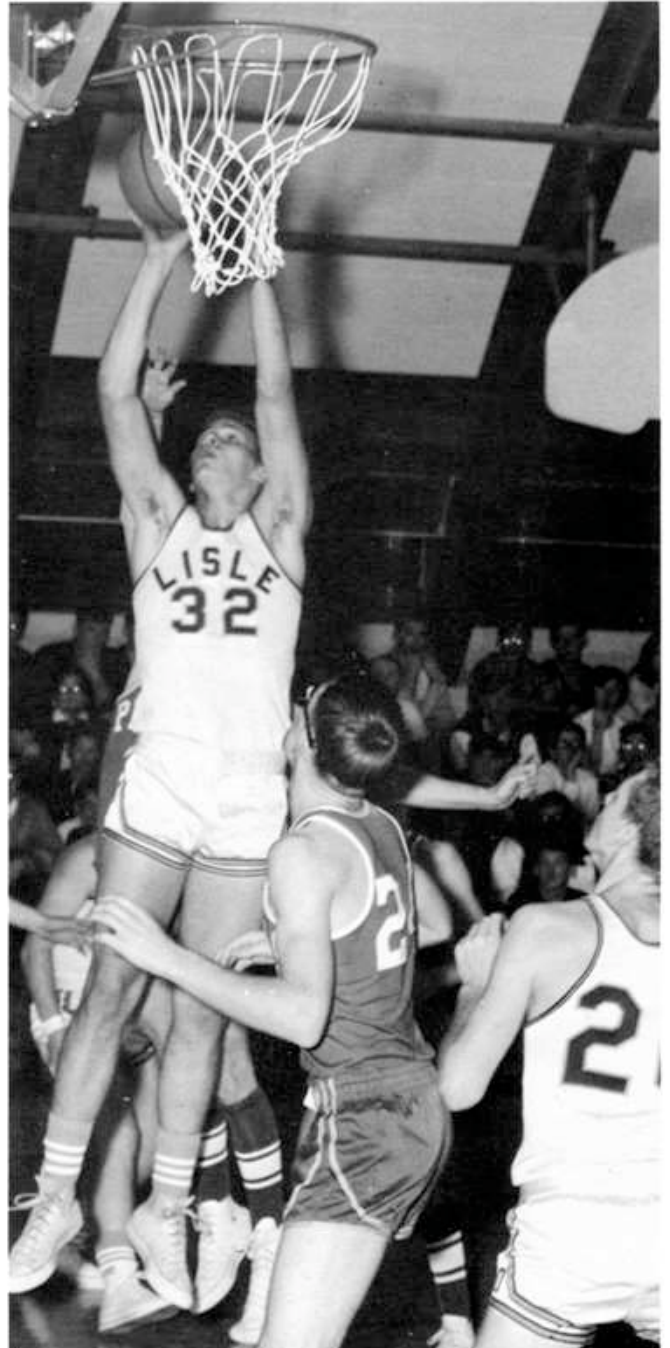
Varsity forward Jim Montague clutches a rebounded ball as he braces himself for the onslaught.

A Proco guard is baffled by Varsity forward Kirby Kepford's adroit dribbling.



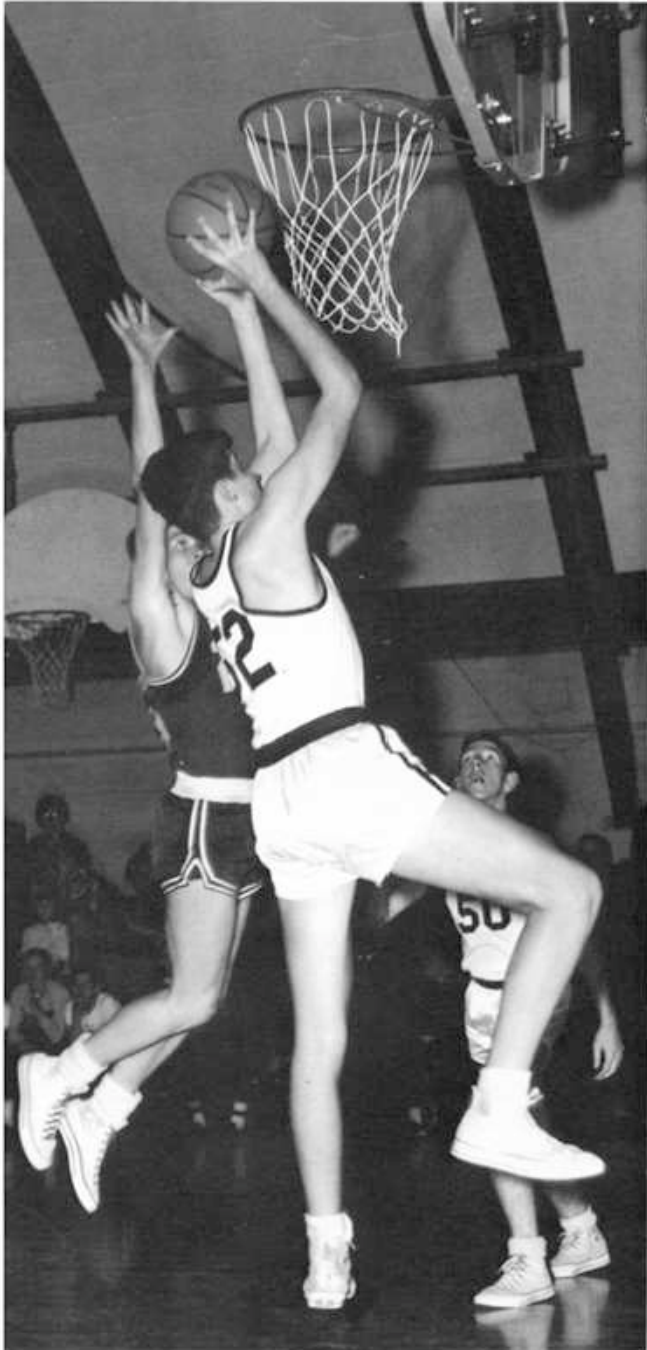


1965 Basketball		
Lisle	68—41	Plano
Roncalli	65—47	Lisle
Elmwood Park	81—53	"
Yorkville	63—37	"
Wheaton	79—67	"
Newark	78—42	"
St. Procopius	67—37	"
Newark	77—39	"
Plainfield	93—55	"
Minooka	80—51	"
Lisle	66—63	Lemont
Lockport West	71—54	Lisle
Marseilles	61—49	"
Stevenson	59—40	"
Yorkville	69—45	"
Serena	65—46	"
Newark	100—42	"
Sandwich	45—39	"
Minooka	72—53	"
Lemont	79—52	"
Oswego	98—39	"

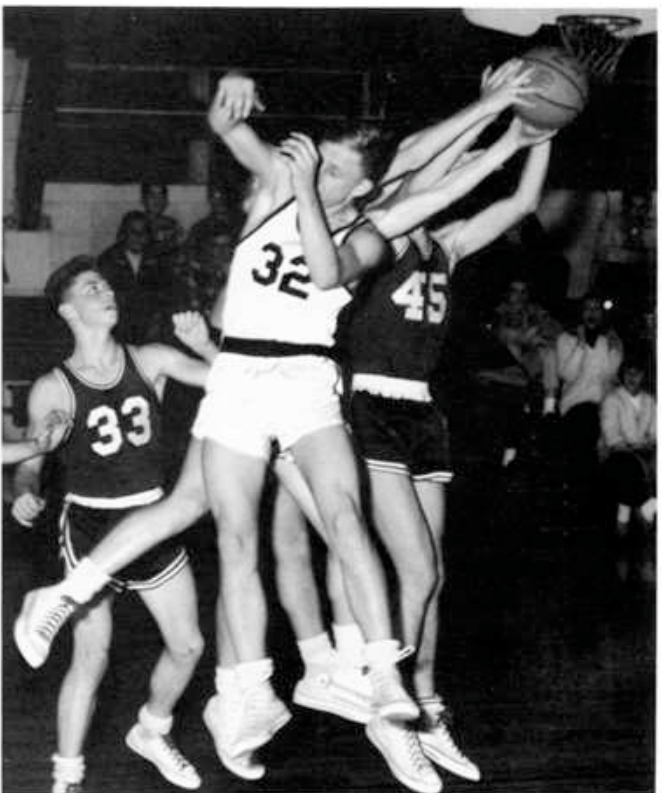


Forward Bill Roge springs for another Lisle basket.

## Frosh-Soph Basketball: High Hopes for Next Year

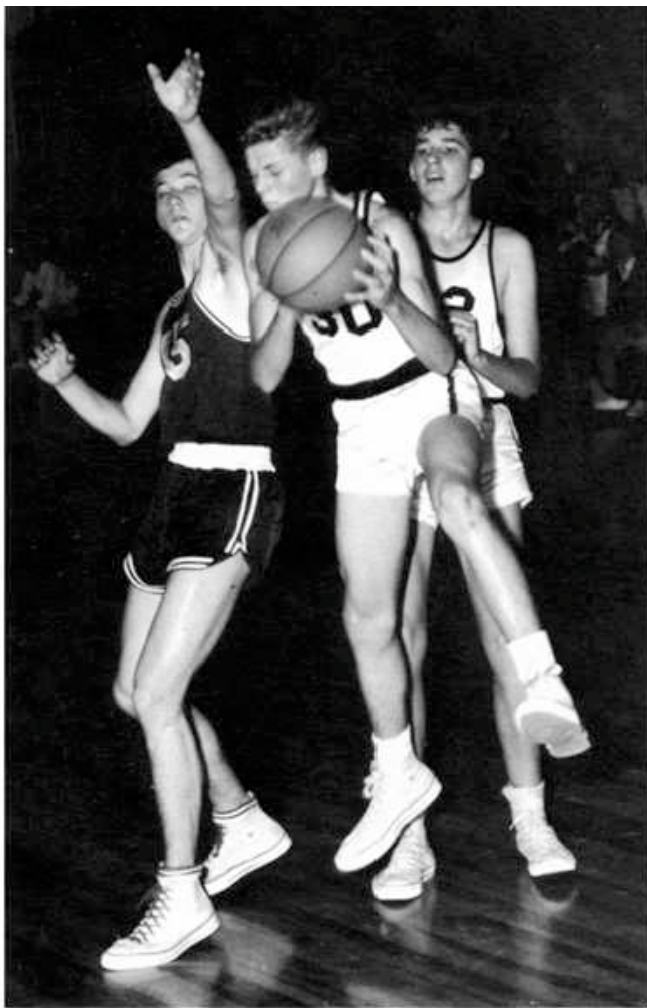


Frosh-Soph forward, John Carothers, goes in for a lay-up.



Proco guards seize the rebound of Sonny Florian's attempted shot.





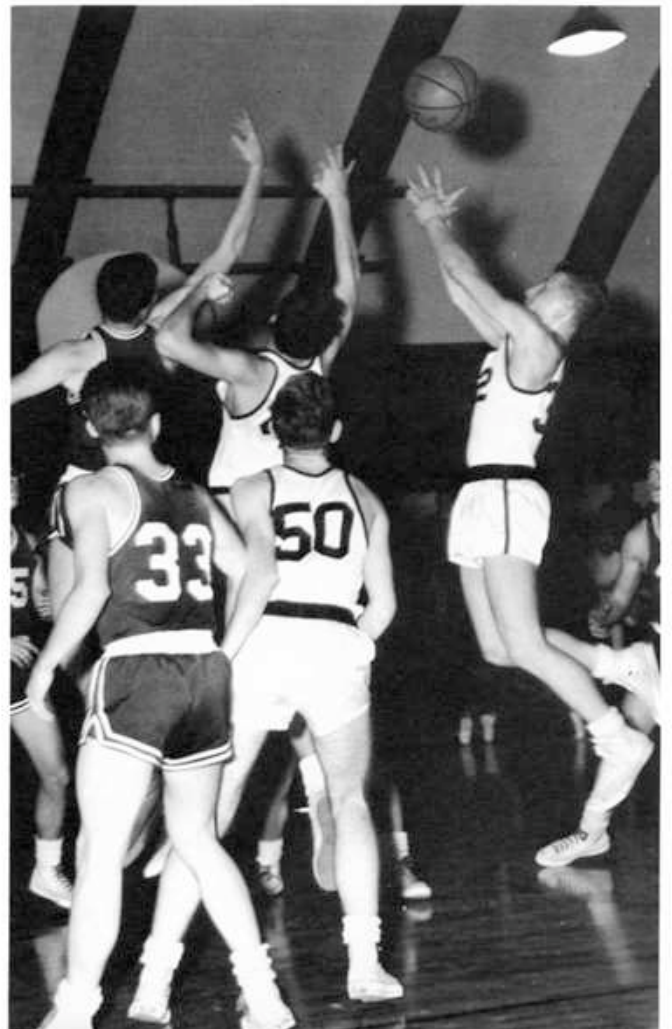
A rebound by Bob Lindgren . . .



and after a fast drive down the court, Moose Ferrin shoots.  
A tip to the Lions!

**1965 Basketball**

Plano	43—40
Roncalli	41—51
Elmwood Park	40—59
Yorkville	44—60
Wheaton	26—67
Newark	25—59
St. Procopius	35—47
Minooka	32—50
Lemont	41—47
Lockport West	38—53
Marseilles	36—39
Stevenson	49—48
Yorkville	46—69
Serena	60—52
Newark	32—59
Sandwich	53—61
Minooka	41—46
Lemont	39—42



The many activities carried on by the various clubs and organizations are coordinated; informative and entertaining assemblies are planned, dances and student activities are organized, and there must be a line of communication between the student body and the administration. Student Council answers these needs. Elected each spring after a week of vigorous campaigning, the Council spends the rest of the year meeting, planning, organizing, and doing.

This year the Council underwent major structural revisions. Early in the year a new Constitution was approved after the old one had been defeated last year. Later, President Gary Tsukuno reorganized the Student Council into six committees: Assembly, Budget, Communications, Honors, Social and Student Expression. Besides successfully handling traditional activities, the Student Council undertook new projects: The Model United Nations Assembly, the new Northeast Conference Student Council Convention, and honors study halls.

This has been a year of renovation for the Student Council—a year in which new activities were tried and new traditions started, thus providing a firm foundation for future Councils.



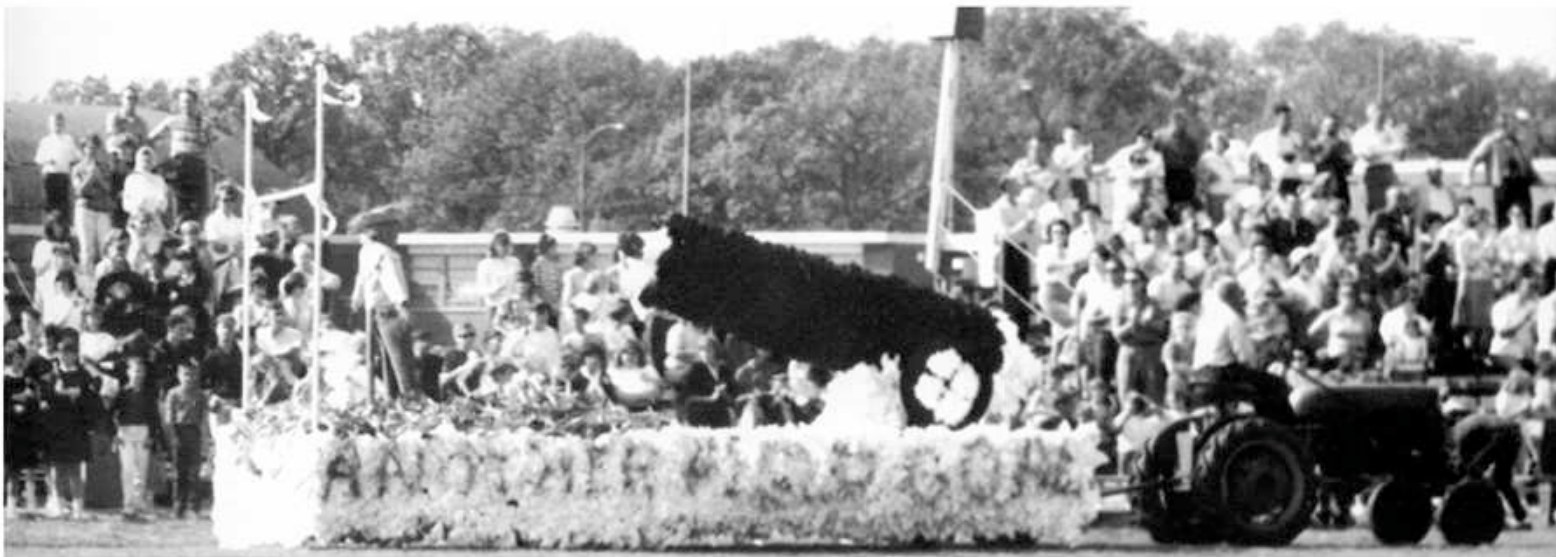
Homecoming—organized, planned and coordinated by the Student Council.







**Student Council**—Row 1: Doug Jensen, Sue Taylor, Barry Melton, Linda Carothers, Valerie Vach, Kathy Kemmerling, Merle Pechous, Jo Schmidt. Row 2: Andy Brubaker, Monika Wullf, Al Carter, Linda Skalic, Gary Tsukuno, Mr. Castino, Advisor; Russ McIlwain, John Carter, Diane Woods. Row 3: Bill Gabler, Cliff Murphy, Dennis Beals, Jim DeGraff, Walter Lockett, Dennis Belom, Nancy Lindgren, Jim Montague, Mike Brady.



As the new year came, so did the move into the new music room. The chorus sang in the Christmas concert and for the dedication. Through February and March they worked in conjunction with the Drama club to produce the musical **Brigadoon**. Other performances included the Lisle Choral Festival, the Spring Concert, Home and School Council, and Baccalaureate. L C H S chorus members also participated in the District One Music Festival and Illinois State Music competition. Hours of individual attention were given by Mrs. Patricia Densford, director of the chorus, to those in the State Contest and **Brigadoon**. Thanks to her, Lisle has a much-improved chorus.



Dale Reed and Sara Martin played a flute-piano accompaniment.



Jerry Snow and Bernie Orpin sing a duet for the first choral concert.





**Chorus—Row 1:** Jenny Mason, Pat Peters, Pam Wilson, Linda Stansfield, Dolores Saltis, Dawn Wright, Merle Pechous, Debbie Stansfield, Jo Schmidt, Carla Benefield, Olga Seredynsky, Robin Morris, Penny Hodaous, Mrs. Densford, Director. **Row 2:** Carol Brenner, Phyllis Thomas, Beth Heinekamp, Mary Beth Pechous, Kathy Kemmerling, Lana King, Stephanie Johns, Sue Taylor, Jan Brinkmeyer, Sue Williams, Sally Monroe, Jane Vining, Kathy Wood. **Row 3:** Rae Blevins, Bonnie Liaromatis, Pam Whitfield, Julia Straub, Janet Martin, Andy Brubaker, Jerry Pearce, John Catlin, Gerri Stanek, Hope Rice, Elizabeth Schunemann, Donna Kubicek, Pam Riske, Judy Paulsen. **Row 4:** Helen Barta, June McCrossin, Diane Kendall, Dave Williams, Mike Williams, Hugo Mulacek, Dennis Belom, Art Laramy, Bob Taylor, Bernie Orpin, Pam Smith, Judy McIlwain, Sara Martin.



Mary Beth Pechous, Sarah Martin, and Sue Williams sang, "Let it Snow, Let it Snow, Let it Snow."

They sit panting under a glaring Saturday sun in heavy wool uniforms, their fingers freeze to the keys of instruments on chill fall mornings, they march through mud, and they swelter during parades. "They," of course, are the L. C. H. S. Band members. A separation of high school and junior high school bands made possible newer and more advanced music. In addition, weekly group lessons during study hall or gym class improved the quality of music as the numerous ensembles and a reactivated dance band proved. This quality showed up in the pep bands at basketball games, the fall and spring concerts, and the dedication of the new school.



A view of the band in concert.

**Band Members**—Row 1: Kathy Homan, Monica Hoppe, Phyllis Thomas, Pam Smith. Row 2: Linda Carothers, Pat Jones, Joe Ingram, Sue McMahon, Don Lindemann, Dennis Beals, Pam Gabler. Row 3: Ann Goodwin, Darcy Anthony, Beth Heinekamp, Susan Nichols, Dan Proud, Spencer Leigh, Mike Brady, Doug Miller. Row 4: Barbara Hammer, Kit Proud, Wendy Sikorski, Olga Seredynsky, Mr. Bartelt, Director; Bill Gabler.







Music precariously balanced, with an eye on Mr. Bartelt, the band played for football games.

Row 1: Julia Straub, Suzanne Sprietsma, Linda Byrd, Susan Mulkins, Dale Reed. Row 2: Lee Hankinson, James Tibbets, Richard Norton, Bill Tinker, John Carothers, Mike Athey, Steve Kitcoff. Row 3: Jim Montague, Sue Zinner, Helen Barta, Rick Simonson, Nancy Burkman, Dan Shepard, John Carter, John Diebold, Gary Seaton. Row 4: Mike Ernest, Ed Eble, Al Carter, Andy Brubaker, Steve Cook, Bill Herlien, Don Beals.



**Yearbook Staff**—Seated: Mary Beth Pechous, Pat Jones, Pat Peters, Dennis Belom, Suzanne Sprietsma, Jan Brinkmeyer. Standing: Pam Gabler, Gloria Pehlke, Pat Mlnarik, Don McKibben, Jeff Lynch, Diane Woods, Rae Blevins, Holly Minnick.



It's finished. A layout editor wearily puts her ruler away, a copy editor slouches in her chair relishing the bliss of not having to be creative anymore, a business manager tucks receipt slips away, and an editor weakly smiles at the completed bundle of photographs, layouts and pictures that make a yearbook. Suddenly it seems sad; no more Sunday meetings, no more frenzied shouts and pleas for the layout that needs captions, or the copy that simply must be shortened! It's a sad, yet fulfilling feeling.

From the chaos which the book is born in, it seems impossible to produce anything orderly. Yet somehow it is done. Somehow the money is raised, ads are sold, copy is written, layout is done; it all fits together beautifully—and it's finished.





Yearbook sponsor, Miss Benson, and Mary Beth Pechous, Editor, study possible caption.

About once a month, the **Roar** staff produced a newspaper. This year the staff printed the first mimeographed edition with pictures before adopting printing permanently. Filled with editorials, student compositions, sports results, informative articles, advertisements, opinion polls on anything from "cuts" to semester resolutions, the paper managed to interest almost everyone who spent a dime for a copy. Coverage of contemporary school life was chronicled throughout the year, leaving a memorable record of L C H S activities. A library can only operate efficiently if books are shelved correctly. Without this, a card catalogue is useless. Besides arranging books, aides help to keep the library neat by straightening magazines, checking books out and in, and cleaning tables. With their assistance, the librarians are free to devote their time to activities of a more professional nature. Junior and Senior girls interested in going into business after graduation joined the Commercial Club. Field trips to nearby companies introduced the girls to the various aspects of business and commercial schools.



**Library Aides**—Seated: Diane O'Connor, Betty Dyntera, Judy Saltis, Penny Hodous, Kathy Kemerling. Standing: Monika Wullf, Stephanie Johns, Ellen Koba, Lynn Kalaher, Maria Mulacek, Charlene Smith.





**Roar Staff**—Row 1: Linda Leja, Verna Jones, Mike Athey, Dale Reed, Kathy Homan, Doug Jensen, Sherry Gamble, Joan Kremer. Row 2: Charlene Smith, Kathy Kemerling, Judy Saltis, John Catlin, Editor, Mr. Jones, Advisor, Craig Clouston, Monika Wullf, Diane O'Connor, Carol Stanley. Row 3: Pat Mlnarik, Jan Fischer, Larry Murdock, Mike Williams, Roy Krueger, Don Schmaker, Helen Christ, Al Carter, Lee Hankinson.

**Commercial Club**—Row 1: Peggy Kral, Norma Benson, Sydne Halsten. Row 2: Joan Liszka, Diane Kendall, Madeliene Wyns.



For students planning to become teachers, FTA provides an opportunity to learn about their desired profession. Thorough observations in Junior Hi and elementary schools, the perspective teachers were able to sit in on classes, watch experienced teachers at work, and assist teachers if requested. Participating in "Books, U.S.A.," the FTA sent American literature to Southeast Asia.

To explore career opportunities in nursing and other health fields, the LMC heard speakers, went on field trips, and studied literature. A speaker and film from Michael Reese Hospital, a visit from a public health nurse and

a film and speaker from an X-Ray technician school were among the many interesting and informative programs. Before Christmas, members baked cookies for the DuPage Convalescent Home in Wheaton. Participation in the Jamboree and Homecoming parade rounded out an active year.

The annual hayride, a stuffed animal donation to the children's hospital, and the traditional Turnabout were the main events organized by the Future Homemakers of America. Development, understanding, and appreciation of the duties and rewards of a homemaker were the prime objectives of the club this year.

**Future Teachers of America**—Row 1: Rae Knox, Pat Matteucci, Darcy Anthony, Jill Janovsky, Lyndi Sprietsma. Row 2: Chris Woolverton, Holly Minnick, Nancy Lindgren, Mrs. Prokop, Advisor, Jan Brinkmeyer, Don Schmoker. Row 3: Laurel Stanley, Judy Westerhoff, Gail Powers, Sue Anne Laramy, Connie O'Connor, Linda Toberman, Betty Dyntera.







**Lisle Medical Careers Club**—Row 1: Verna Jones, Diane O'Connor, Pam Gabler, Karen Kroener, Mrs. Minnick, Sponsor; Rae Knox, Ellen Koba, Kathy Kemerling, Kathy Homan. Row 2: Bobbie Blevins, Pat Cmolik, Sue McMahon, Kathy Wood, Maren Hagarty, Pam Smith, Audrey Yackley, Sally Monroe, Sherry Gamble, Gloria Pehlke, Jill Janovsky.

**Future Homemakers of America**—Row 1: Linda Leja, Diane Cinert, Pat Peters, Susan Curtin, Barbara Hammer, Linda Carothers, Mrs. Johansen, Sponsor, Patricia Kendall, Diane Kendall, Jill Janovsky, Penny Hodous. Row 2: Linda Saraga, Jackie Kusnierz, Joan Kremer, Brenda Perry, Merle Pechous, Betty Dyntera, Pat Jones, Marsha Phillips, Pat Matteucci, Pat Cmolik, Rae Knox. Row 3: Verna Jones, Linda Renc, Cathy Marcellis, Lynda Byrd, Bobbie Blevins, Nancy Heitz, Carol Brenner, Connie Johansen, Robin Morris, Janice Jones, Peggy Kral, Brenda Getty. Row 4: Kathy Kemmerling, Sue Taylor, Chris Woolverton, Pam Whitfield, Linda Coffey, Stephanie Johns, Ellen Koba, Judy Saltis, Anna Burden, Beth Baker, Kathy Wood, Sherry Gamble. Row 5: Gail Meister, Laura Krouse, Joan Liszka, Fern Johnson, Sydné Halsten, Sandra Bakken, Daryl VanKampen, Frances Lemons, Linda Lewis.



To direct bewildered visitors, collect attendance slips, check passes, and run numerous errands for the office and the teachers, an institution was established—that of hall monitors. At the beginning of the year, upperclassmen volunteered for this duty, securing a reprieve from the distractions of the study halls, to the relative quiet of the corridors.

A dedicated core of long-suffering gym leaders serve in each girls' gym class. These girls have ample opportunity to develop leadership ability by directing exercises, refereeing games, and spotting adventurous attempts on apparatus. Experience in leadership and physical education (plus an

impervious attitude toward any and all complaints and banter) have been made possible by this new institution.

For every action there is an equal and opposite reaction—so states Newton's Law of Physics. Therefore, if boys can participate in sports, girls can too. With this idea in mind, girls pursue a variety of activities, from bowling and swimming to the fiercely fought tournaments in basketball and volleyball in G A A. Monday nights ring with screams and angry shouts during a basketball game while the regular team gets a night off and girls learn athletic skills, sportsmanship, and begin to vaguely comprehend the game.



**Hall Monitors**—Row 1: Gloria Pehlke, Holly Minnick, Suzanne Sprietsma, Carla Benefield, Mary Kowalczyk, Christine Woolverton, Frances Lemons. Row 2: Jerry Pearce, Gary Jenkins, Jim Herlien, Ted Garringer, Pat Mlnarik, Janet Martin, Maren Hagarty.





**Gym Leaders**—Row 1: Pat Cmolik, Anna Burden, Linda Renc. Row 2: Sue Anne Laramy, Rae Blevins, Gail Powers, Patricia Kendall.



**Girls Athletic Association**—Row 1: Pat Peters, Linda Leja, Kathy Thomas, Sydne Halsten, Rae Blevins, Ellen Koba, Mrs. Di-lacova, Sponsor; Judy McIlwain, Lana King, Connie Johansen, Marsha Phillips, Rae Knox. Row 2: Joan Kremer, Holly Min-nick, Jill Janovsky, Lyndi Sprietsma, Darcy Anthony, Linda Saraga, Diane Cinert, Pat McMagon, Olga Seredynsky, Ann Good-win, Pat Kindshoven, Kit Proud, Gloria Pehlke, Suzanne Sprietsma. Row 3: Betty Dyntaxera, Brenda Perry, Verna Jones, Pam Kassell, Debbie Bearderstadt, Dawn Tuma, Beth Baker, Bobbie Blevins, Janice Jones, Kathy Homan, Pam Gabler, Merle Pech-ous, Pat Cmolik, Arlee Spence. Row 4: Linda Toberman, Karen Kroener, Judy Saltis, Phyllis Thomas, Daryl Van Kampen, Sandra Bakken, Stephanie Johns, Dale Reed, Gail Powers, Judy Westerhoff, Barbara Hammer, Linda Carothers, Anna Bur-den, Carol Stanley. Row 5: Monika Wullf, Beth Heinekamp, Frances Lemons, Helen Christ, Diane Woods, Sue Anne Laramy, Nancy Lindgren, Pam Smith, Janet Reed, Maren Haggarty, Jan Brinkmeyer, Sue Zinner, Valerie Vach, Charlene Smith.

**Pep Club**—Row 1: Penny Hodous, Dawn Wright, Pat Matteucci, Marsha Phillips, Sue Taylor, Jerry Pearce, Kathy Kemerling, Mary Beth Pechous, Pat Peters. Row 2: Linda Leja, Jackie Kusnierz, Joan Kremer, Lyndi Sprietsma, Darcy Anthony, Olga Seredynsky, Diane Cinert, Rae Knox, Linda Saraga, Pat Kindshoven, Jill Janovsky, Holly Minnick. Row 3: Agnes Jannisch, Verna Jones, Kathy Homan, Pam Kassell, Bobbie Blevins, Carol Brenner, Debbie Beaderstadt, Dawn Tuma, Brenda Getty, Pam Gabler, Pat Cmolik, Merle Pechous. Row 4: Ed Eble, Bill Gabler, Connie O'Connor, Barbara Hammer, Linda Carothers, Gail Powers, Monica Wullf, Kathy Wood, Judy Saltis, Ed Fraser, Anna Burden, Karen Kroener. Row 5: Dale Reed, Pam Whitfield, Rae Blevins, Diane Woods, Janet Reed, Dennis Belom, Larry Murdock, Pam Smith, Pat Mlnarik, Maren Hogarty, Ellen Koba, Stephanie Johns.



To cheer with joy, to scream with expectation, to celebrate with abandon—to be a member of Pep Club. Thanks to money-making concessions and a soc-hop, the Pep Club was able to finance a bus to each game this year. Despite a relatively unvictorious season, Lisle managed to have the best-filled bus (with sometimes five people in a seat) and some of the most patriotic cheer—"leaders" and followers. This has proved to be one of the Pep Club's most successful years.

The first year of the Electronics Club gave members a chance to discover and experiment in the area of electronics and amateur radio. Members worked first to obtain industrial equipment for experimentation which was used for several science fair projects and to earn "ham tickets" to go

on the air. Although young, the Electronics Club has been extremely active; the basis has been laid for even better years ahead. With the new auditorium and stage came a complex lighting system. A delighted A V Club gleefully attacked the job of manning them. After the challenge of staging and lighting for "Our Hearts Were Young and Gay," the club had a chance to try out the stage lights for the district speech and drama contest and several assemblies, until the height of lighting techniques came with "Brigadoon." In addition to working for the events, the boys in A V also help teachers to show movies, work opaque projectors, and run record players. This allows teachers to use all their time instructing and gives students a chance to learn the technical part of school life.





**Electronics Club**—Row 1: Steve Frank, Dan Gurski, Dan Liaramatis, Mike Athey. Row 2: Bob Pippenger, Ed Eble, Dwight Brenstein, Bill Wenning, John Forest. Row 3: John Buss, Bill Roge, Russ McIlwain, Mark Hanson, Tony Deckard.



**Audio-Visual Club**—Row 1: Steve Frank, Dan Gurski, Dwight Brenstein, Bob Pippenger, Ed Eble, Bob Thompson. Row 2: George Kilens, John Forest, Bill Thomas, Mike Stanton, John Buss, Phil Nystedt, Jon Govi.

**French Club**—Kneeling: Lyndi Sprietsma, Monica Wulff, Judy Saltis, Charlene Smith, Laurel Stanley, Olga Serebinsky. Seated: Pat Kindshoven, Carol Brenner, Cliff Murphy, Miss Durston, Darcy Anthony, Don Lindemann, Linda Saraga. Standing: Scott Bain, Larry Cox, Mike Brady, Pam Smith, Ken Slope, Joe Ingram, Don Schmoker.



To better understand France, its customs, people, and culture, the French Club expanded its program this year to include speakers who have visited and lived there. An active program involving plans for money raising projects, the Jamboree booth and social events generated enthusiasm among the members. An increase in growth and activity has made this the French Club's most successful year. Money was the key issue in the Spanish Club this year; money to send two students, a junior and a senior to Mexico to study during the summer. A two-week course at the Universidad International in Sattilo, Mexico was the

goal. To raise money the club worked on several projects. A movie, **Don Quixote**, and the Jamboree booth were their major sources of income. With the profits thus earned the club sent L C H S's first "foreign exchange" students to Mexico.

When the Art Club meets once each month, members are free to paint, draw, or work in whatever media they wish. These meetings provide additional opportunities for development and expression of those interested in art. The main project this year has been several after school trips to the Chicago Art Institute.





**Spanish Club**—Kneeling: Merle Pechous, Pat Matteucci, John Stample, Marsha Phillips, Sue Szal, Rae Knox. Seated: Doug Jensen, Kit Proud, Joan Kremer, Chris Woolverton, Mrs. Goodell, Dennis Beals, Jackie Kusnierz, Beth Heinekamp, Anne Goodwin. Standing: Carlos Calderon, Kathy Kemerling, Sue Taylor, Mike Athey, Dale Reed, Judy Westerhoff, Janet Reed, Linda Zettel, Gail Powers, Kathy Wood, Kathy Homan, Debbie Beaserstadt, Doug Miller.



**Art Club**—Row 1: Geri Griffiths, Susan Shultes, Sherry Stookey, Cathy Marcellis, Connie Johansen, Monica Wulff, Pat Cmolik. Row 2: Betty Rose, Lynn Kalaher, Steve Kanaba, Stan Lemons, Joe Delaney, Gayle Gildernick, Maria Mulacek.

N H S was established to give recognition to those of high scholastic standing who have demonstrated outstanding ability in service, leadership, and character. Each year the Senior members of N H S hold an assembly in which new members are initiated. Ten per cent of the Junior class and fifteen per cent of the Senior class can be chosen to be members by faculty ratings. In addition, the N H S holds a banquet at the end of the year to honor those who have been on the honor roll two times.

The waiting is over—achievements are listed, a name is announced, and with a long walk across the stage, N H S has a new member.







Initiation is a corsage and a candle.



Dr. John Martin, President of the high school board, gives an almost extemporaneous speech on pride.

**National Honor Society**—Row 1: Sara Martin, Mary Beth Pechous, Holly Minnick, Jan Brinkmeyer, Pat Peters, Linda Carothers, Diane Woods, Janet Martin, Suzanne Sprietsma, Sue Murray. Row 2: John Catlin, Jim Montague, Rick Simonson, Mike Williams, Dennis Belom, Russ McIlwain, Dan Proud, Mark James, Gary Tsukuno.



This year the drama performances were marked by experimentation. Not having a stage the early part of the year made possible the production of the first play "in the round." With the new stage came the vast undertaking of **Brigadoon**, Lisle's first musical. Besides providing a high level of entertainment, the Drama Club strives to develop knowledge and skill in the theatrical arts. Through the production of several plays, the members learn the mechanics of staging, costuming, makeup, and lighting, as well as the many facets of good acting. To encourage young writers to develop and improve their skills, the Creative Writing Club was formed this year. Under the guidance of Mrs. Michael, the group began to meet and discuss individual works. A program consisting of movies, discussions, and writing in several areas of literature proved instructive, a much needed aspect of extracurricular activity.



**Drama Club**—Row 1: Darcy Anthony, Pat Kindshoven, Merle Pechous, Linda Leja. Row 2: Mary Kowalczyk, Sally Monroe, Judi Paulsen, Karen Kroener. Row 3: Barry Melton, Judy Saltis, Kathy Kemerling, Kathy Wood. Row 4: Sara Martin, Diane Woods, Patricia Kendall, Pam Smith. Row 5: Dave Williams, Steve Ferrin, Hugo Mulacek, Dennis Belom.

A reluctant Jeff (Barry Melton) is courted by Meg (Kathy Kemerling) in drama rehearsals for **Brigadoon**.







Row 1: Mr. Rapp, Director, Sue Curtin, Pat Cmorlik, Rae Knox, Lyndi Sprietsma, Kit Proud, Penny Hodous. Row 2: Linda Skalic, Gary Tsukuno, Mary Beth Pechous, Carol Brenner, Pam Gabler, Joan Kremer, Jackie Kusnierz. Row 3: Dan Gurski, Elmer Grunst, Barbara Hammer, Jan Brinkmeyer, Lana King, Keith Kraft, Doug Miller. Row 4: Rae Blevins, Judie McIlwain, Dale Reed, Stephanie Johns, Ellen Koba, Diane O'Connor, Sue Taylor. Row 5: Dwight Brenstein, Ed Evans, Helen Barta, Pat O'Connor, Ed Fraser, John Catlin, Andy Brubaker.



**Creative Writing Club**—Row 1: Barry Melton, Gary Tsukuno, Suzanne Sprietsma, Mrs. Michael; Sponsor, Mike Williams, Mary Beth Pechous, Chris Woolverton. Row 2: John Catlin, Patricia Kendall, Sara Martin, Doug Cunningham, Sue Anne Laramy, Bart Clouston, Jon Fischer, Maren Hagarty.

A judge listens to the humorous speaking.

Hosting Lisle's first invitational debate tournament and its first regional speech contest were significant achievements for the Speech Club. The debate squad continued to compete against the large schools of the area. Highlighting the season were the varsity capture of the first-place trophy at the Lisle Invitational Tournament and a two-day trip to the Augustana College five-state tournament. Participation in other large tournaments and the Sectional at Morton West provided valuable experience for the Lisle squad. This year's individual events found students trying several types of speaking. Oratory, extemporaneous speaking, after dinner speaking, and prose reading were only a few of the fields entered by the students. The District Speech Contest provided challenging opportunities in all these areas.



"Berenike," the winning play, was put on by Morton East.





After-dinner speaking contestant.



Serious lunch conversation was prompted by morning performances.



**Speech and Debate Club**—Row 1: Darcy Anthony, Merle Pechous, Doug Jensen, Jeff Trostad, Ann Goodwin, Pat Kindshoven, Doug Miller. Row 2: Chris Woolverton, Valerie Vach, Lee Hankinson, Suzanne Sprietsma, Linda Coffey, Beth Heinekamp, Betty Dyttera. Row 3: Steve Frank, Lawrence Lien, Mike Athey, Cliff Murphy, Otto Kindshoven, Martin Munjak, Diane O'Connor, Ellen Koba.



Construction difficulties made possible a theatre-in-the-round production of "Our Hearts Were Young and Gay" Lisle's first attempt at such staging skillfully changed the gym into a delightful experiment in drama. Actors no longer worried about upstaging and consequently were able to move about more naturally.

When two young girls gallantly undertake to cross the ocean for a vacation in Paris, their adventures are certain to be varied. From Emily's unwitting "drowning" of a stowaway, the reappearance of unwanted safety pockets, to egotistical plans of a Parisian actor, the play bubbled comedy. Capacity crowds each night testified to the continued success of the drama club.



Mary Kowalczyk fearfully wakes Helen Barta, insisting that the ship has hit an iceberg.

The safety pockets Emily and Cornelia try to lose always manage to return.







Convinced that the ship will sink, Emily practices her swimming.

On the day the ship reaches France, Cornelia comes down with the measles.

Hopes rest on John Catlin, Monsieur Du Bois, who has promised Cornelia an acting audition.



Sue Curtin helps John Carter straighten that important part of a French window washer's make-up, the mustache.



the 1990s, the number of people in the UK who are aged 65 and over has increased from 10.5 million to 13.5 million, and the number of people aged 75 and over has increased from 4.5 million to 6.5 million (Office for National Statistics 2000).

There is a growing awareness of the need to address the needs of older people, and the need to ensure that the health care system is able to meet the needs of older people. The Department of Health (2000) has published a strategy for older people, which sets out the government's commitment to improve the health and well-being of older people, and to ensure that the health care system is able to meet the needs of older people.

The strategy for older people is based on three main principles: (1) to improve the health and well-being of older people, (2) to ensure that the health care system is able to meet the needs of older people, and (3) to ensure that older people are able to live independently and actively. The strategy sets out a range of measures to be taken to achieve these aims, including: (1) to improve the health and well-being of older people, (2) to ensure that the health care system is able to meet the needs of older people, and (3) to ensure that older people are able to live independently and actively.

The strategy for older people is a key document for the health care system, and it sets out the government's commitment to improve the health and well-being of older people, and to ensure that the health care system is able to meet the needs of older people. The strategy sets out a range of measures to be taken to achieve these aims, including: (1) to improve the health and well-being of older people, (2) to ensure that the health care system is able to meet the needs of older people, and (3) to ensure that older people are able to live independently and actively.

The strategy for older people is a key document for the health care system, and it sets out the government's commitment to improve the health and well-being of older people, and to ensure that the health care system is able to meet the needs of older people. The strategy sets out a range of measures to be taken to achieve these aims, including: (1) to improve the health and well-being of older people, (2) to ensure that the health care system is able to meet the needs of older people, and (3) to ensure that older people are able to live independently and actively.

The strategy for older people is a key document for the health care system, and it sets out the government's commitment to improve the health and well-being of older people, and to ensure that the health care system is able to meet the needs of older people. The strategy sets out a range of measures to be taken to achieve these aims, including: (1) to improve the health and well-being of older people, (2) to ensure that the health care system is able to meet the needs of older people, and (3) to ensure that older people are able to live independently and actively.

The strategy for older people is a key document for the health care system, and it sets out the government's commitment to improve the health and well-being of older people, and to ensure that the health care system is able to meet the needs of older people. The strategy sets out a range of measures to be taken to achieve these aims, including: (1) to improve the health and well-being of older people, (2) to ensure that the health care system is able to meet the needs of older people, and (3) to ensure that older people are able to live independently and actively.

The strategy for older people is a key document for the health care system, and it sets out the government's commitment to improve the health and well-being of older people, and to ensure that the health care system is able to meet the needs of older people. The strategy sets out a range of measures to be taken to achieve these aims, including: (1) to improve the health and well-being of older people, (2) to ensure that the health care system is able to meet the needs of older people, and (3) to ensure that older people are able to live independently and actively.

The strategy for older people is a key document for the health care system, and it sets out the government's commitment to improve the health and well-being of older people, and to ensure that the health care system is able to meet the needs of older people. The strategy sets out a range of measures to be taken to achieve these aims, including: (1) to improve the health and well-being of older people, (2) to ensure that the health care system is able to meet the needs of older people, and (3) to ensure that older people are able to live independently and actively.



**SPONSORS**

## **Ben Franklin**

NATIONALLY KNOWN  
LOCALLY OWNED

4716 Main St.

Lisle, Illinois

WO 8-7703

## **LISLE DRUG STORE**

Prescriptions  
and  
Sundries

4734 Main St.

WO 9-1096

Lisle, Illinois

**WHERE YOU SAVE DOES MAKE A DIFFERENCE**



## **AND LOAN ASSOCIATION**

4722 Main St.

Lisle, Illinois

JOIN A LEAGUE NOW OR DO YOUR  
OPEN BOWLING AT THE BEAUTIFUL

## **LISLE BOWL**

Cocktails — Billiards

4920 Lincoln, Rt. 53

Lisle, Illinois

968-1300



## **LEO'S CLEANERS**

Complete Service

WO 9-3835

4752 Main Street

Lisle, Illinois

## **LISLE DARI CASTLE**

Carry-out

"America's Favorite Across the Nation"

1624 Ogden Avenue

WO 8-9711



Joseph Floyd and Elmer Zettle  
Owners

928 Ogden Avenue                      964-1666  
Lisle, Illinois

"HAVE A PROBLEM??? ASK US!!"

For all your  
Real Estate and  
Insurance Needs see

## **WALTER R. GAMBLE**

4706 Main Street  
Lisle, Illinois  
WO 8-3892

CONGRATULATIONS CLASS OF '66

## BANK OF LISLE



4733 Main Street / Lisle, Illinois / WOODLAND 9-2800  
Serving "The Arboretum Village" and Surrounding Area

Phone 969-0925

## BELOM REAL ESTATE

Homes  
Farms  
Business

4716 Main St.  
Lisle, Illinois





U. S. Choice Meats  
Frozen Foods

Freezer Meats  
Vegetables

## **ECONOMY FOODS**

Joe and Wanda Rychtarik  
WOodland 9-3820

4732 Main Street  
Lisle, Illinois



## **HANKINSON LUMBER & SUPPLY CO.**

Plumbing—Hardware—Glidden Paints—Electrical Supplies

Ogden Avenue (Top of Hill)

WOodland 9-2718

Lisle, Illinois

Serving Lisle  
And Surrounding  
Communities.

Over 34 Years  
At The Same  
Location.

Congratulations Class of '66

## **Riedy's Hardware and Lumber Co.**

Established in 1889

Wo 9-3847

1017 Front Street  
Lisle, Illinois

## **LISLE NEWS AGENCY**

Home Delivery of ALL Chicago Newspapers

1014 Burlington Avenue  
(across from Burlington Depot)

Lisle, Illinois  
WOodland 9-4333

## **SMITTY'S STANDARD SERVICE**

RT. 53 & Maple Ave.—Lisle, Illinois

Complete Car Care

\* Tune-up

\* Road Service

968-9865

Beauty is a Habit, Not a Gift

## **Larry's Beauty Salon**

- \* Latest Hair Styles
- \* Tipping
- \* Hair Coloring
- \* Custom Permanents  
for the texture of your hair

964-0767  
4746 Main Street  
Lisle, Illinois



Compliments of  
**ILLINOIS MUNICIPAL  
WATER CO.**

Serving DuPage, Cook, Lake  
and Will Counties

1201 Burlington Ave.

Lisle, Illinois

WO 8-4591

WO 8-4745



**LEO'S CITGO**

Washing—Lubrication—Tires

Ogden & Main

Lisle, Illinois

Phone

WO 8-9709

Tune-ups

Repair—Muffler

Dynavision

Batteries

Accessories

**JOSEPH D. BAST**

REAL ESTATE  
INSURANCE

TAX SERVICE

4704 Main Street

Lisle, Illinois

WO 9-4753

CONGRATULATIONS TO THE CLASS OF  
'66

**HAVERLANDT'S**

\* Cameras

\* Television Sets

\* Service

4754 Main Street

Lisle, Illinois

# FOUR LAKES



Swimming  
 Banquets  
 Parties  
 Maple Ave.  
 Just West of  
 Route 53



Building a Bigger, Better Lisle  
 Community

FOR YOUTH ..... a new direction  
 FOR DESIGN ..... a new direction  
 PLANNING ..... a new direction  
 for the future

## THE MEADOWS

the community for new directions in  
 living . . .



THE SIGN OF SAVINGS



for  
GASOLINES & OILS

- \* Cigarettes
- \* Soft Drinks
- \* Water Softener Salt

### **NORMAN OIL CO.**

Ogden Avenue                      Lisle, Illinois  
½ Block East of Main St.

## **LA BIANCO'S FOOD AND LOUNGE**



- \* Spaghetti
- \* Ravioli
- \* Steaks
- \* Chops
- \* Chicken
- \* Italian Beef
- \* Italian Sausage
- \* Sea Foods

Our SPECIALTY Real Italian Pizza

WOODLAND 8-6885  
4801 Lincoln Ave. (Rt. 53). Lisle, Ill.

## **DEWEY INSURANCE AGENCY INC.**

Since 1930

"Where Insurance is a Business, not a Sideline"

All Types for Individuals or Business  
Including Aircraft & Marine

Agents and Owners:

Joseph Dennis ..... CHestnut 6-2784  
Robert Pidcock ..... WOODland 0-5330  
Jack Solin ..... FLeeewood 4-1877

FLeeewood 2-1220

or

Chicago Phone: BI 2-1229

505 S. La Grange Road

La Grange, Ill.

## GARY'S PAYLESS DRUG STORE

1040 West Maple



WO 8-4165

Compliments of

## JIM & JEFF REPAIR SERVICE

1508 Ogden Ave.

Lisle, Illinois

WO 9-0859



## EGIZIO CHEVROLET OLDSMOBILE, INC.

Ogden Avenue . . . 2½ miles West of Rt. 53  
Naperville, Illinois



Compliments of

**WALINGER STUDIOS, INC.**

Champlain Bldg.

CE 6-7734

37 S. Wabash Ave.

Chicago 3, Illinois

**D & H SERVICE STATION**

Tires  
Batteries  
Tune-Up By SUN  
Equipment

Greasing  
Pickup &  
Delivery Service  
Road Service

Trailers for rent

WO 8-9874

941 Ogden Ave.

LISLE, ILLINOIS

**PATRON LISTING**

TOWN LIQUORS  
4730 Main Street

SPROVIER'S RESTAURANT  
400 Ogden Avenue

TWIN VIEW BEAUTY SALON  
4750 Main Street

LISLE GREEN HOUSE  
4405 Main Street

D & H SERVICE STATION  
411 Ogden Avenue

JOE'S BARBER SHOP  
4704 Main Street

LISLE BAKERY  
4750 Main Street

DOWNERS GROVE SPORT SHOP  
1035 Curtiss Street

# Autographs



# Autographs

# Autographs



# Autographs

# Autographs

# Autographs



Blank page

Blank flyleaf



