



1965

VALÉ

Blank end paper

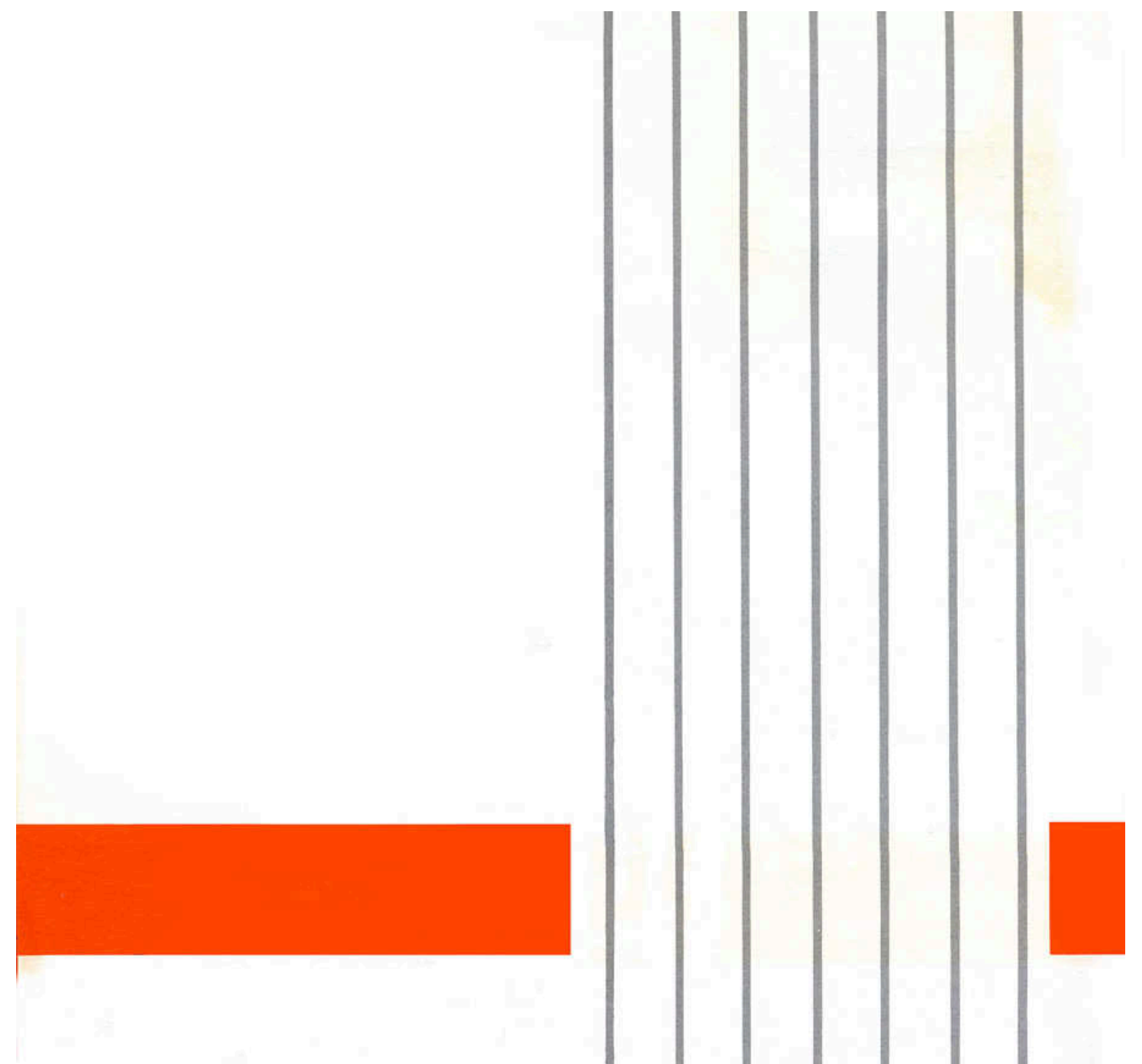
LISLE
COMMUNITY HIGH SCHOOL
VALE' 1965

Richard Mason, Editor

Joseph Siebert, Business Manager

Mary Beth Pechous, Assistant Editor

Miss Marilyn Kanwischer, Advisor



"Time has no divisions to mark its passage, there is never a thunder-storm or blare of trumpets to announce the beginning of a new month or year. Even when a new century begins it is only we mortals who ring bells and fire off pistols."

Thomas Mann
(1875-1955)

Don't
waste
my
time
or
mine
or
anybody
else's
time



Time – the intangible yet inescapable quality which is shared by all, and all alike. Each and every society is given that common ingredient, a time for existence.







But it is at this point that societies begin to differ from each other; all societies are unique. In their given time, groups of people produce a history which is peculiar to itself, and for which only they are accountable.





What is it about a society that sets it apart from the rest? To be realistic, it would be impossible to answer this question completely. Yet one is able to make observations and can, if he chooses, draw conclusions from these.

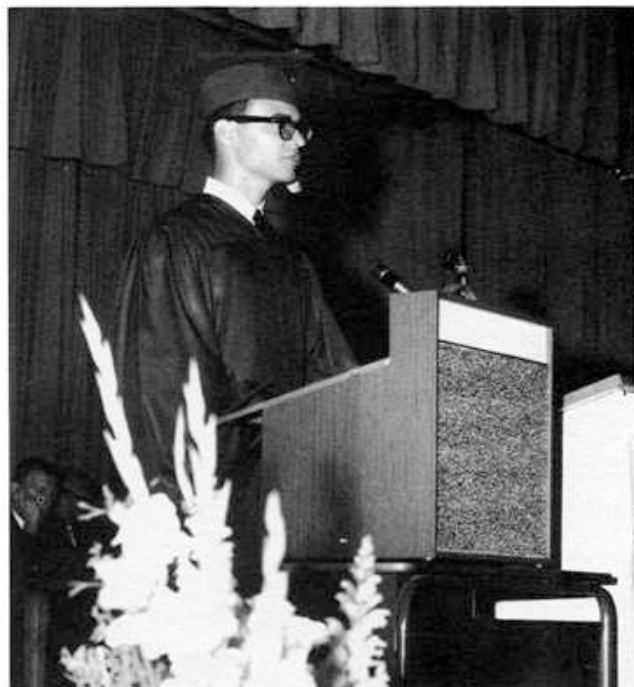




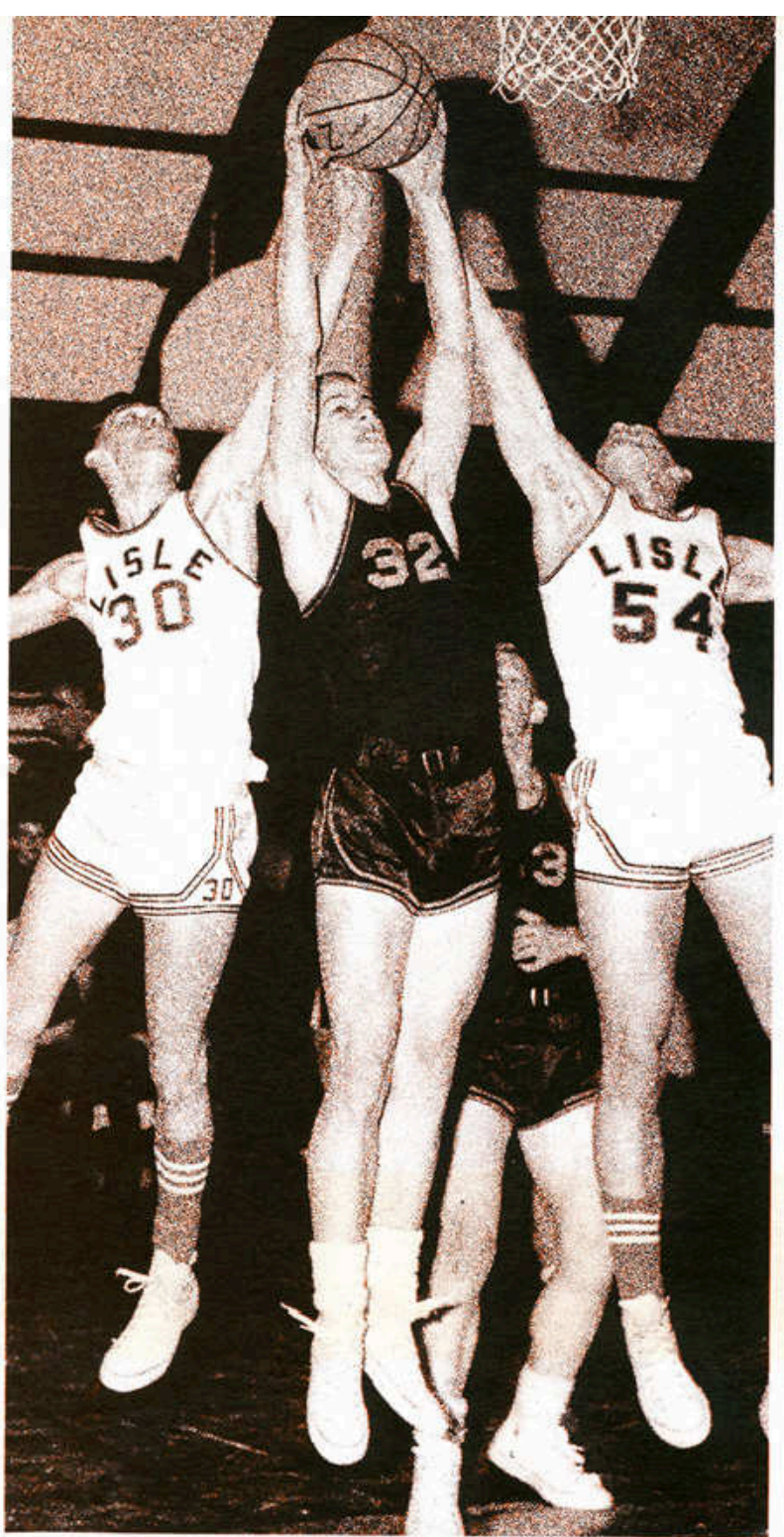
The manner by which a span of time is viewed is entirely at the discretion of the analyst. We feel that a year can best be examined by observing not just the people of the society or their attainments. More important are the forces within the group – the sense of unity or membership; the feeling for action; the willingness to cooperate; the acceptance of responsibility. These elements – to the degree they are expressed – determine the ultimate results.



At this point it would perhaps be best if we (with the appropriate apologies to Mann, of course) presented to the reader Vale 1965, the story of a year.







SPIRIT

. . . action within the school; the feeling within people that motivates them to think, act, perform.



Professor, How Could You!



Professor Perry refutes the perpetual advice of his parents and friends.

CAST MEMBERS: Sara DeMeo, Bill Hayes, Diane Woods, Terry Kimes, Mary Edwards, Joe Siebert, Linda Skalic, Barry Melton, Mary Kowalczyk, and Mike Janis.





Barry Melton gave an excellent performance as "Grandpa Perry."



An undaunted spirit, good looks, and an aggressive personality helped Valerie Whitman, played by Mary Kowalczyk, in her bid for the affections of the professor.



In her pursuit of Professor Perry, Tootsie Bean, played by Sara DeMeo, found that the Professor's butler, played by Bill Hayes, was more to her liking.



Forgotten are the hours of memorizing and practice, the homework not done, the perplexing problems of staging and sets.

The lights dim; the curtain opens. For two hours capacity audiences share with our "players" the enjoyment of someone else's problems which, though often disconcerting to the sufferer, can be riotously funny.

It is a truth universally acknowledged that a single, middle-aged professor in possession of a good position must be in need of a wife. Such was the lamentable case of Professor Keats Perry, who became the object of his friends' well-intentioned matchmaking.

For many members of the cast, "Professor How Could You" marked their debut in the theatrical world. With the careful direction and fatherly advice of Mr. Rapp, an inexperienced cast produced a very delightful, hilarious comedy.

Showboat '64

With "Showboat" as a theme, the annual Student Council Talent Show might have been more appropriately called "Hodgepodge". The acts represented a cross-section of the performing arts with an added flavor of "Beatlemania". The wide range of talents on stage was equaled by the performance of those who worked behind the scenes — building and painting sets and working on publicity and staging. Emcee for the show was Mike Adamec; student directors were Sue Gabler and Mary Beth Pechous.



Satirizing the efforts of professional advertisers, representatives of the Class of '64 added a distinctive humor to the show.

A terrific sense of humor, lots of practice, and plenty of "guts" made Gary Wright and Mary Carter's rendition of "Honeybun" one of the most popular acts in the '64 talent show, "Showboat".



The Mersey beat produced by "Ralph and the Raviolis" (Bob Esposito, Rich Kobar, Bob Luther, and Ralph Caliendo) hit the banks of the DuPage amid the shrieks and cries characteristic of "Beatlemania".



Judy Zekl and Helen Barta "jazzed up" the Showboat.

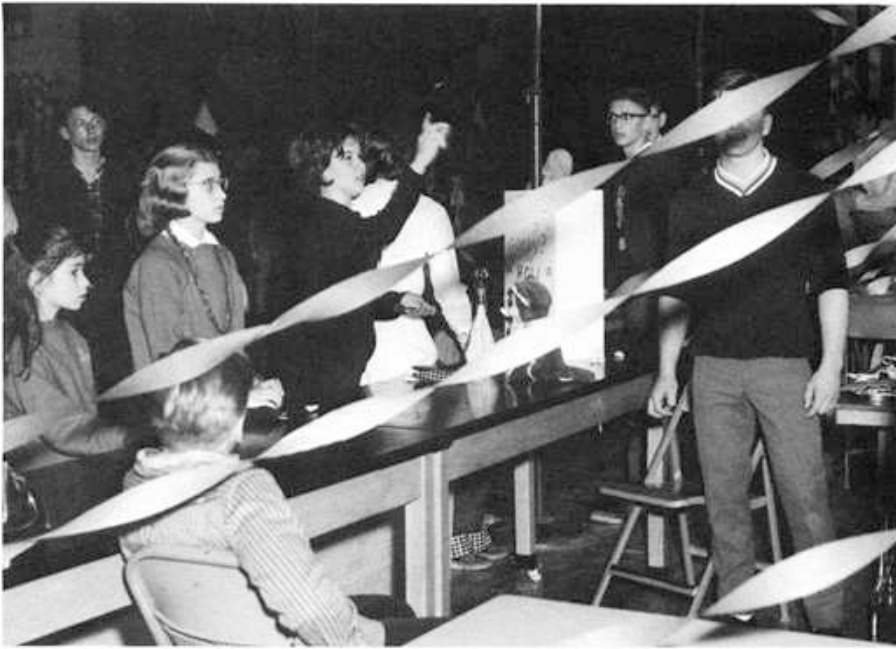


The senior quartet: Sandy Johnson, Carol Nan Smith, Karen Rychtarik, and Diane Sanders. Need we say more?



Jamboree '64

The Jamboree serves a variety of purposes. Not only does it give classes and organizations an opportunity to augment deflated treasuries, but it also gives students a chance to really let off steam. Cafeteria tables, crepe paper, and balloons transformed the gym into a gala midway. For twelve hours it was "Anything Goes!" Glenn Study Hall became the "little theatre" — complete with popcorn, a full-length feature movie, and cartoons. Just for fun, you could have had your best friend "locked up" or could have thrown water balloons at bikini-clad upperclassmen. For those with a flair for art, the Class of '65 provided a do-it-yourself modern art machine. Moral of the story: Great fun was had by all!



A good aim comes in handy at the Jamboree



Ralph and the Raviolis provided musical entertainment.



One of the many booths which required skill and coordination.



The Freshman Class booth was the most popular with the younger set.



"Lock up" your best friend . . .



Soak up a bit of culture . . .



Or test your skill.

Baseball '64

Baseball — the national pastime and one of LCHS's two spring sports. It has always been the case (1964 no different) that weather has been a prime factor during the season. The diamondmen began practicing in the gym, a technique appreciated but not desired by Coach Rapp. Then the season began. The Lions put forth their best team in several years, giving each opponent a fight. Certainly Lemont, the eventual champions, had their troubles in defeating Lisle.

BASEBALL 1964 RECORD			
Lisle	9	5	Plano
Plainfield	13	3	Lisle
Lisle	5	2	Newark
Minooka	3	0	Lisle
Lisle	11	1	Yorkville
Plano	3	1	Lisle
Lemont	1	0	Lisle
Lisle	5	4	Newark
Plainfield	5	1	Lisle
Lisle	15	4	Yorkville
Minooka	10	3	Lisle
Lemont	3	1	Lisle
St. Procopius	3	0	Lisle



Dave Moyes foils a Newark scoring attempt.

Bob Montague during pre-game warm-up.



TEAM MEMBERS — Seated: Coach Rapp, Ed Engle, John Reavy, Al Moudry, Dave Moyes, Mike Carrie, Jim Kawecki, Manager

Barry Melton. Second Row: Dave Varble, Mike Novak, Art Laramie, David Heggen, Tim Hoffman, Richard Mason, Bob Arlon, Bob Montague, Ed Jones, Brent Wilcox.



Lisle versus Newark, May 9, 1964.



Track '64

The gym echoed to the cadence of calisthenics last spring as over 70 boys came out for the LCHS track program. A few were just getting in shape for baseball, but the majority of these enthusiastic athletes finished out the season and made it a very successful one. Although track is an accumulation of individual events, it is characterized in general by the hard work and desire that must be put into each minute of practice for any meet.

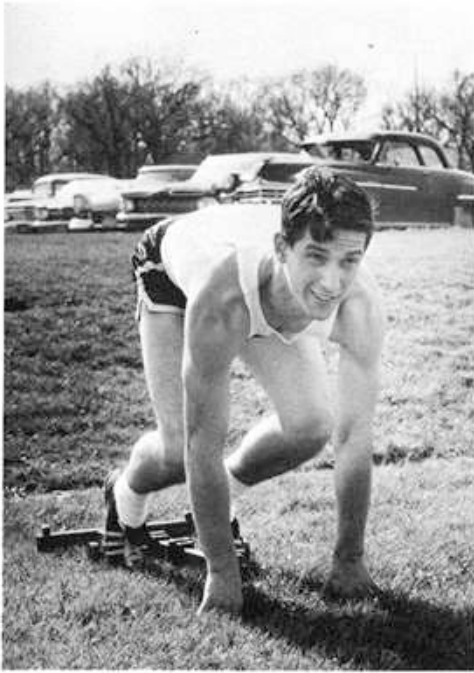


Discus man Bob Gihle represented LCHS in the downstate meet.



TRACK TEAM MEMBERS — Row 1: Jim Sloup, Steve Kitcoff, Dave Cinert, Ed Eble, Spencer Leigh, Mark James, Bob Taylor. Row 2: Jim Herlein, Jerry Smrt, John Carter, Mike Sikorski, Dan

Proud, Doug Monroe, Jim Wilson, Mike Adaméc. Row 3: Coach John Ciesielski, Dave Leigh, Rich Johnson, Bill Roge, Dennis Belom, Bob Gihle, Boo Luther, Don Beals, Rick Paulsen.



Dashman Mike Adamec was co-captain of the team.



The school broad-jump record was broken by Bill Cinert with a jump of 19'10".

1964 GRADUATES — Row 1: Jerry Smrt. Row 2: Tim Carlisle, Bruce Cunningham. Row 3: Bill Cinert, Mike Adamec, Roland Jenkins. Row 4:

Rich Johnson, Bob Gihle, Rick Paulsen, Dave Leigh.





Mary Ann Patten and Kurt Kulp propose a toast to the Class of '65.





“Southern Gardens” . . . Prom '64

Floor-length gowns swishing against the background of a stately Southern mansion, the faint smell of gardenias and roses, and the swingin' sound of the band carried Juniors and Seniors into a make-believe world of Southern charm and hospitality. Pre-prom parties were in vogue, and the already hectic weekend was climaxed with Sunday picnics and beach parties. Prom meant the end of many things. For the Juniors, it was the climax of months of meticulous preparation and the exhausting problems of fund raising and decorating. For the Seniors, it was their last high school dance, a blithe goodbye to the world they were leaving behind. In a few hours it was all over, the pseudo-sophistication was gone, but the memories last.



Frosh-Sophs Bring Home Co-Championship

History may or may not repeat itself, but similar events do occur, as Lisle's Freshman-Sophomore football team showed this year, by topping the FVC (Lisle's Frosh-Soph did this three years ago, also). The year 1964 was a rugged, exciting, and worthwhile one for all concerned. Everyone will remember the fight for the conference—the outcome unknown until the final game against Lemont. The Cubs thrashed Lemont and won for themselves a co-championship, shared with Yorkville and Plainfield. Perhaps the biggest factor in winning was the defense — tough and aggressive, able to get the ball for the offense.



FROSH-SOPH MEMBERS: Row 1: Bob Lindgren, Larry Froehlich, Bruce Frey, Gary Seaton, Mark James, Steve Kitcoff. Row 2: Manager Tomacek, Ed Eble, Gary Jenkins, Alan Carter, Lee

Miller, Steve Grittner, Jim Wynn. Row 3: Manager Steve Kanaba, Assistant Coach William Fee, Jeff Lynch, Mike Klima, Brent Wilcox, Bill Gabler, Glenn Simpson, Jim Stanley.

in Conference



Row 1: Larry Maxwell, Cliff Murphy, Fred Hirsimaki, Gary Harper, John Forest, Manager Vern Everette. Row 2: Dave Cinert, Bill Thomas, Dave Williams, Spencer Leigh, Gordon Plohr, Mike

Stanton, Don Cross. Row 3: John Carver, Ray Crow, Art Laramie, Tom Mason, Jim Montague, Terry Wald, Jerry Pearce, Coach Tony Castino.

FROSH-SOPH FOOTBALL RECORD			
Mooseheart	7	0	Lisle
Lisle	32	0	Plano
St. Frances of DeSales	18	6	Lisle
Lisle	12	0	Naperville B
Plainfield	26	6	Lisle
Lisle	12	7	Yorkville
Lisle	12	7	Sandwich
Lisle	12	7	Lemont



Kitcoff does a solo around end . . .

so does Harper . . .





Pursuit wins games.

"Each Saturday the Lisle Cubs set out with their scientific experiment of football. They took one part experienced sophomores, one part enthusiastic freshmen, and many parts of practice; mixed them together, and the result was—explosive football. To this chemistry of football the team added some well-known laws of physics. They became immovable objects on defense and applied a great deal of force on offense.

"Perhaps the most important part of the science of football is mathematics. You need the best number of boys participating to make up two such fine teams as the Lisle Frosh-Soph and the Freshmen squads, added to a sufficient number of touchdowns, and the result is a co-championship in the Fox Valley Conference. Yes, the Age of the Science of Football is upon us at Lisle. Let's hope it's here to stay."

—Coach Tony Castino.

as Gabler gets pinned . . .



and Cinert exercises his stiff-arm.



Lions Lose Six but Find Revenge

An analysis of the 1964 Varsity Football season comes to the conclusion of "poor", if one uses the record as his basis. The Lions came from the Fox Valley Championship team of 1963 to a 2-6 record this year. Competition was tough all around, and Lisle "took it on the chin" more than once. Yet there were two especially noteworthy games this year, ones that will be remembered. The first was on Homecoming day: Lisle versus Plainfield. In a battle that wasn't decided until all was over, the Lions defeated Plainfield 7-6, the first Homecoming win for a Varsity team in four years. The following week Lisle faced Yorkville.

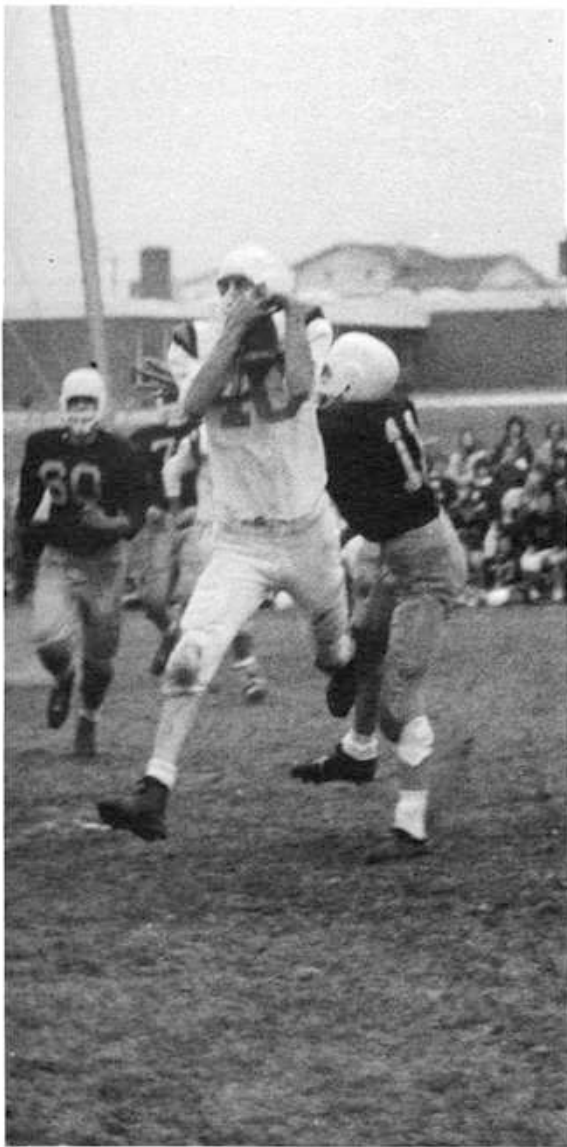


VARSITY TEAM MEMBERS — Row 1: Coach Dan Whitmarsh, Tony Kaye, Vince Moudry, Mike Donaldson, Alan Moudry. Row 2: Bill Smith, Don Barta, Ed Simon, Chuck Rosseter, Mark Hansen, Bill Adamec. Row 3: Terry Tuma, Ed Jones, Mike Sikorski, Larry

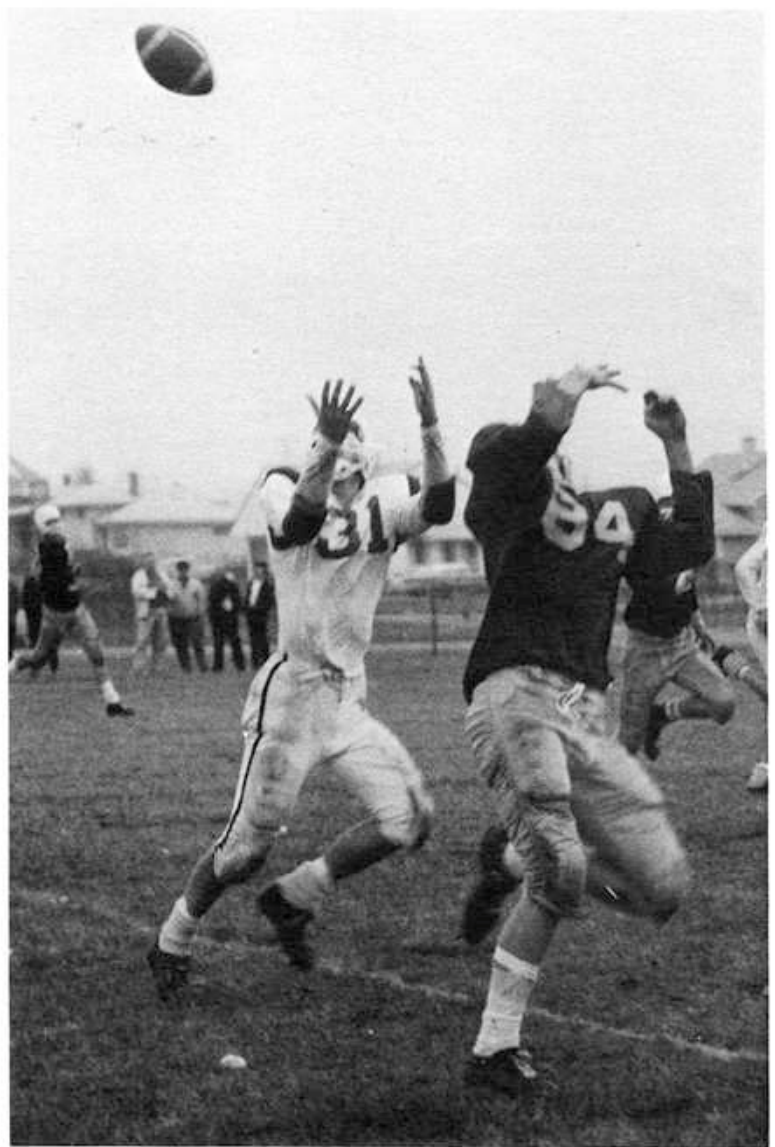
Murdock, Terry Kimes, Gary Mulkins, Ed Blindt. Row 4: Assistant Coach Roger Bushdiecker, Paul Havenar, Joe Siebert, Boo Luther, Tim Hoffman, Bill Roge, Dwight Hoffman, Rich Mason.

Against Plainfield and Yorkville

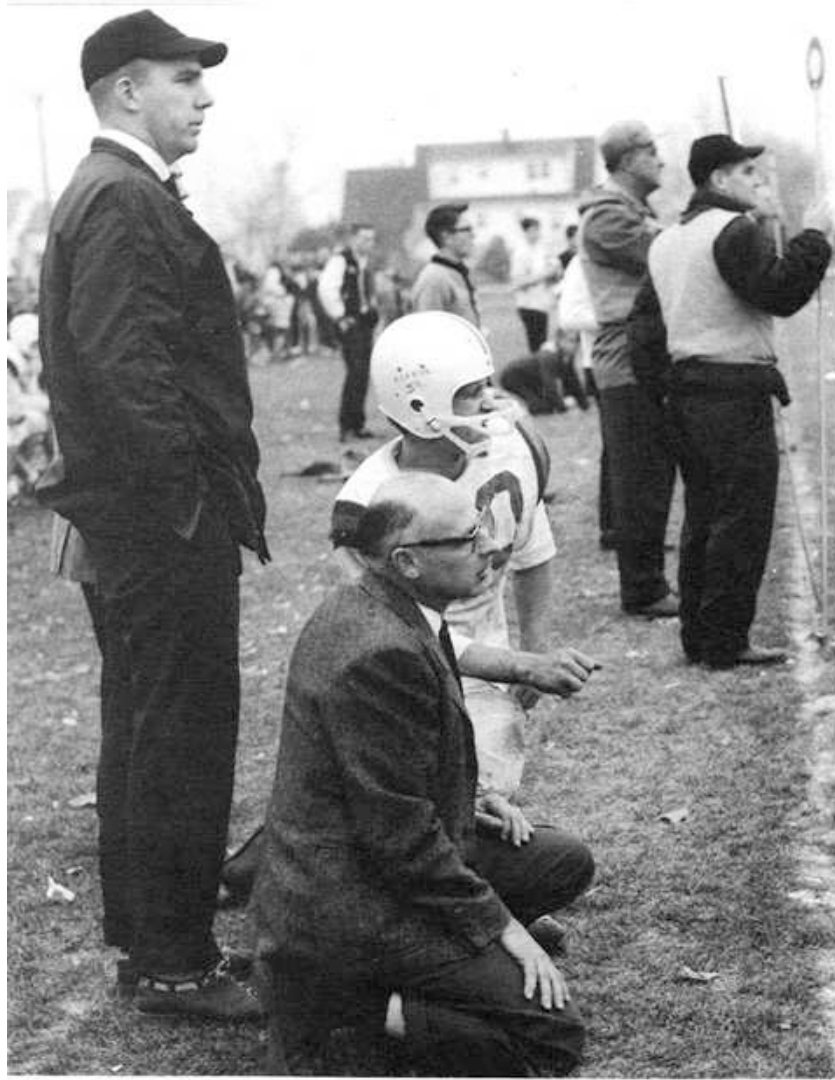
The Foxes had been the only conference team to beat Lisle during the previous season—and this they did by a touchdown on the last play of the game. This time a sweet revenge was in the air: The Lions dumped Yorkville 12-6. Regardless of these highlights, the overall record was unimpressive. But it is illogical to judge the efforts of coach and player solely by this viewpoint. Football is not just a game, not simply an outlet for power. It is a complex experience. The participant faces the task of performing in the face of adversity, in spite of physical punishment. Perhaps it will be more meaningful if we submit this point to the view of a coach.



A fine pass reception by Dwight Hoffman.



Paul Havenar about to intercept a Lemont pass.



A careful scrutiny of the game made by the Varsity coaches.



A Havenar run assisted by Roge.

"It is not a simple task for a coach to create an intelligent rationale for the game of football at the interscholastic level within a cultural matrix where values are in a transitional state. Yet a coach must come to grips with this task if he is to assume his rightful prerogative within the total educational perspective of modern society. To begin with, a coach must have an understanding of why a boy plays football. It is my belief that a young man is not playing for the coach; he is playing for himself. After all, this lad is the same person on the football field that he is in the classroom where he is trying to prove something to himself. In addition to this, a coach must be aware of the fact that he can command a boy's physical presence at a given place and that he can evoke a measured number of skilled muscular reflexes per hour a day. The coach must never be unmindful that he is not able to command enthusiasm, initiative, or loyalty.

"Devotion of heart, minds, and souls—these attributes must be earned by the player. The development of a climate which will foster and nourish these values is the central task to which a football coach must dedicate himself. The football player must not be denied the right to bleed, sweat, sacrifice himself, and undergo hardships in order to attain personal satisfaction. For, after all, there is no academic credit given for the knowledge obtained on a Saturday afternoon against an opponent who has expended an equal amount of time and energy. The reward is success. The public examination of a contest by a most critical audience has been the stimulant which has made the teaching of football, for both the participant and the coach, one of the better instructional accomplishments of our secondary educational systems. It must be kept clearly in mind that for every player who dons a football uniform on an autumn afternoon a moment of truth has arrived."

— Coach Dan Whitmarsh



Roseter completing a flying tackle.



Here's Roge showing Plainfield where not to run.

Sikorski pounces on a fumble during the Homecoming game.

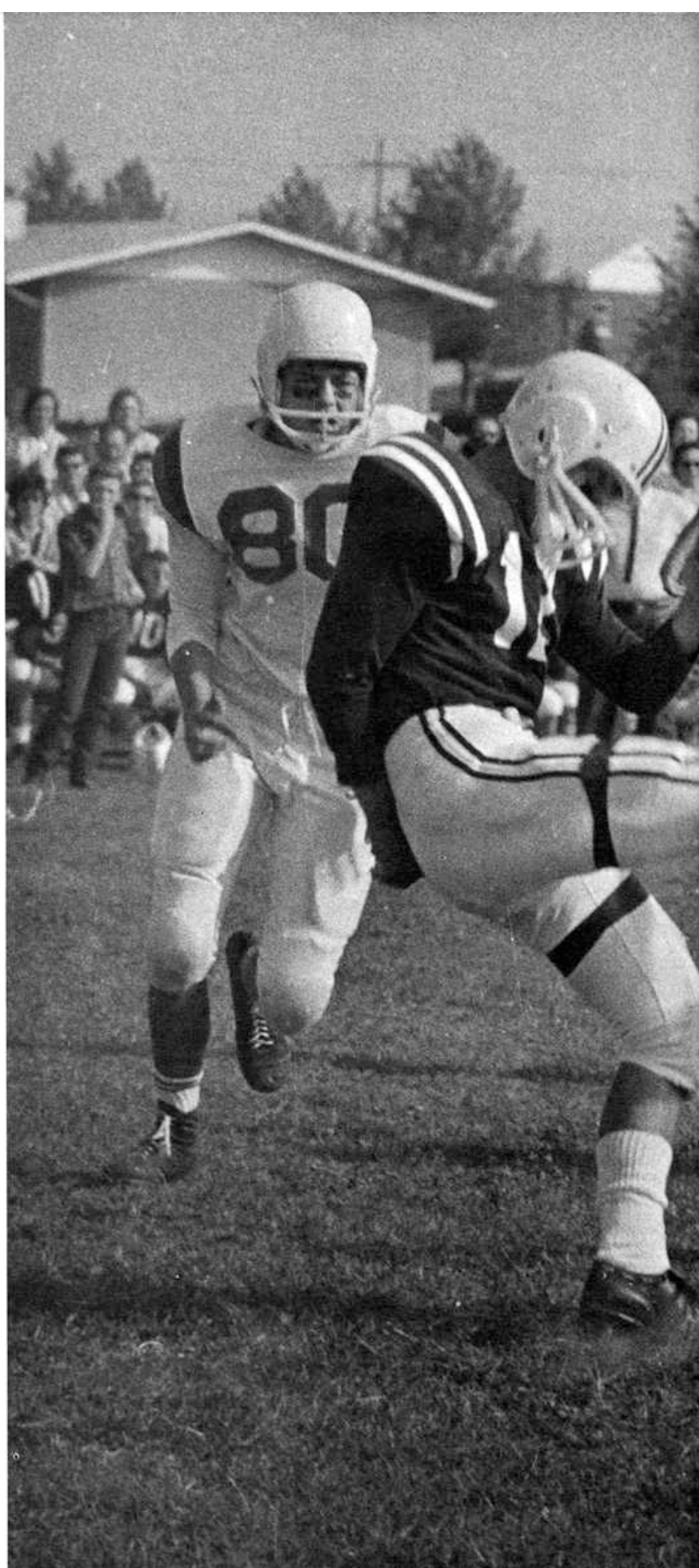


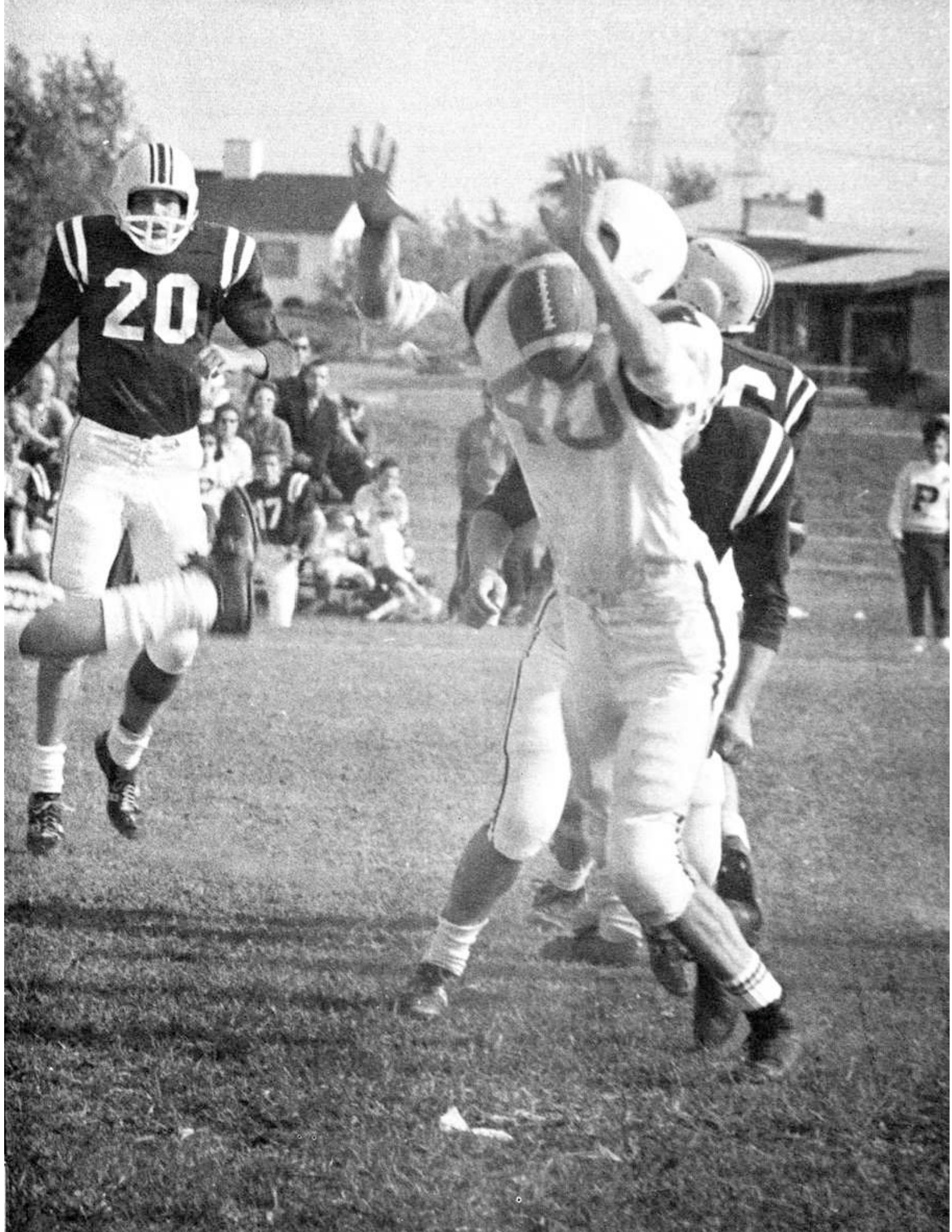
FOOTBALL 1964 RECORD

Mooseheart	38	12	Lisle
Plano	21	7	Lisle
St. Frances of DeSales	39	0	Lisle
Herscher	31	21	Lisle
Lisle	7	6	Plainfield
Lisle	12	6	Yorkville
Sandwich	34	0	Lisle
Lemont	27	7	Lisle

History . . . a Matter of Seconds

This picture captures in an instant the fate of Homecoming 1964. All conference Dwight Hoffman smothered a Plainfield punt attempt and raced unhampered for a touchdown. The extra point attempt bounced off the upright and fell in for the seventh point. This was in the first quarter. Three quarters later the Wildcats went on to score, but their extra point attempt was unsuccessful. Plainfield's hopes were kept alive by two consecutive Lisle fumbles but the Lions, spurred on by Most Valuable Player Vince Moudry, halted any further scoring effort.







Sue Dudley and Pat Mlnarik helped create the "Storybook" illusion.



"Phew — that bonfire's pretty warm!"



Yearbook staffers Rick Simonson, Kate Hlivjak, Judi Paulsen, Mary Beth Pechous, and Leslie Hutchinson spent Saturday morning in the kitchen.



Boo Luther adjusting Sue Reasoner's corsage.

Shortly after the September return to classes, **Homecoming** preparations began. Acting as coordinator for the entire week of festivities, the Student Council picked "Storybook" as the theme. Amid the panic of tests marking the end of the first six weeks, parade floats and dance decorations began to take shape. Then, suddenly, it was upon us. The halls were festooned with blue and white crepe paper. Everywhere were pleasant reminders to "Smash Plainfield" and "Pound 'em into the ground." Five queen candidates were nominated by the Senior boys. Class color day was observed. Then came the election and anxious waiting. Thanks to the confidence of local citizens in our students, we again had a bonfire and snake dance. Amid cries of surprise and elation, Cathy Curtin was Crowned 1964 Homecoming Queen. Cheers pierced the air as "Joe Plainfield" was engulfed in flames. On through the night we worked to complete the floats, mechanically stuffing chicken wire with napkins and hammering nails into wood. Dawn—and the ashes of a bonfire were still smouldering. The aroma of pancakes and bacon from the Yearbook's pancake breakfast filled the air. The largest parade ever, "Once Upon a Time," prophesized a smashing Lisle victory. Once again alumni stood to sing "On Ye Lions" as the band formed a huge "L" and pom-poms flew in the air. The Class of '66 won first prize in the float competition. Climaxing the festivities was "Storybook," the junior-class sponsored dance. Faculty, alumni and students danced to the music of the Jerry May Band, and although the music was a bit dated, no one seemed to be suffering.



"Once Upon a Time" proceeding through downtown Lisle.



Sara DeMeo



Madge Mayhall



Mike O'Connor



Carol Soderlund



Alumns Diane Rychtarik and Mike Adamec returned to visit old friends.



1964 Homecoming Queen Cathy Curtin and escort, John Marshall, a '64 graduate.

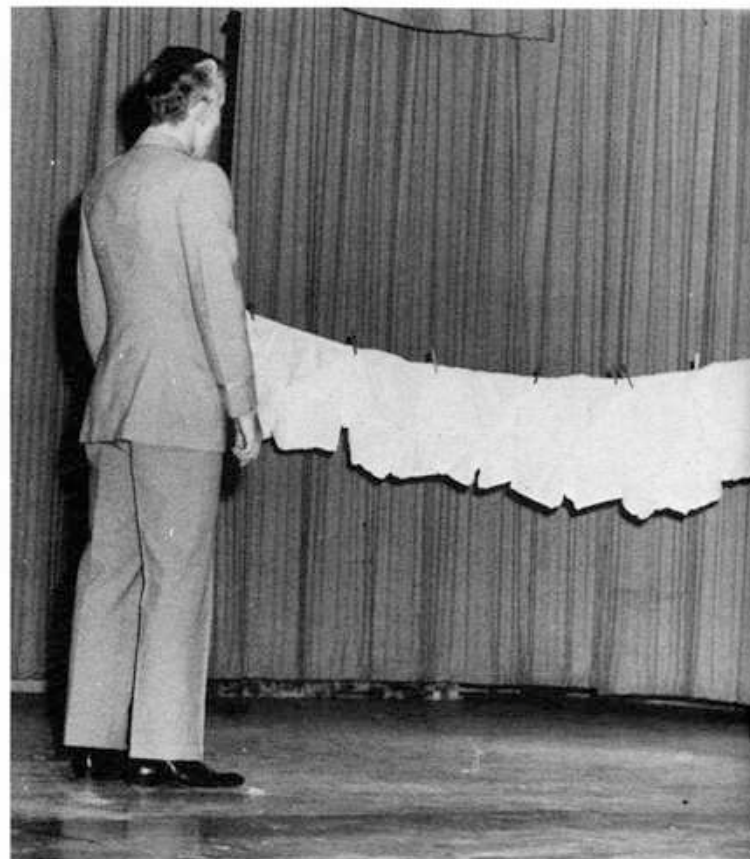


"Lotus Blossom," played by Helen Barta, somehow managed to make things more complex for Fisby even though she spoke no English.

This year's fall play, "The Teahouse of the August Moon," was the result of a combined effort by many people. The play concerns the plight of a certain Lieutenant Fisby as he attempts to "put the village of Tobiki (Okinawa) on the map." An unbelievable set of occurrences befalls Fisby on his mission: he is given a Geisha girl and, among other things, the villagers convince him to erect a distillery and build a teahouse. The fun comes to a climax when Fisby's superior officer, Colonel Purdy, learns of these exploits.

For all the performances the crowds, unfortunately, were sparse, owing to the weather conditions at the time. But this didn't stop Rapp-and-company from producing a terrific show enjoyed by all.

Two important factors in this production were the setting and the make-up. Credit must be given to veterans Steve Roake and Kate Hlivjak for their work on staging. As far as make-up goes, Miss Kanwischer had the tough job of making various LCHS students look like natives of Okinawa — the results were very realistic and effective.



The rather blustery Colonel Purdy (Paul Havenar) discussing the day's wash with interpreter — loafer Sakini (Barry Melton).

"The Teahouse of the August Moon"

Fisby (Richard Mason) appears somewhat dismayed, while Lotus attempts to make him wear the "kimono."



Being very conservative, Sakini replaces his chewing gum (slightly worn) back into the protective matchbox.



The storm hits as Purdy enters — he is made short work of, though, and the jeep sets off for Tobiki.

Before the storm: a disgruntled Fisby inquires of Sakini just how six natives, assorted luggage, and one goat are going to be able to accompany them on the jeep to Tobiki.





A typical scene showing Lotus and Sakini in one of their more persuasive moods.



DRAMA CLUB MEMBERS — Row 1: Rich Mason, Mike Janis, Bill Hayes, Mr. Rapp (director), Barry Melton, Pat O'Connor, Paul Havenar. Row 2: Gary Mulkins, Terry Tuma, Joe Siebert, Steve Roake, Rod Perry, Tom Mason, Jon Fischer, Bob Taylor, Spencer Leigh, Dennis Brinegar, Gary Stanley, Bill Shultz, Tim Hoffman, Terry Kimes, John Lindsay. Row 3: Pam Wilson, Kate Hlivjak, Louise May, Anna Catlin, Suzie Morris, Linda Skalic, Penny Hodous, Mary Ann Patten, LaVerne Cook, Sue Klima, Shirley Plankinton, Judy King, Bobbi Moss. Row 4: Karen Wood, Mary McIlwain, Mary Edwards, Kathy Dubin, Linda Trostad, Sara DeMeo, Carol Soderlund, Mary Kowalczyk, Carol Stanley, Rae Knox, Shirley Spannuth, Pat Peters, Judy McIlwain. Row 5: Leslie Hutchison, Helen Barta, Tricia Kendall, Mariloral Kincade, Pam Riske, Vicki Tarr, Diane O'Connor, Barb Hammer, Dale Reed, Judy Saltis, Gerri Stonek, Dianne Woods.

The Drama Club is a representation of an activity which attracts many people — teachers and students alike. There are many reasons for this — there is the singular experience and excitement of being on stage, of course; more over, there are numerous other openings, for people are needed for staging and make-up. After long weeks of practice, the big nights come and all efforts are focused on the one objective — knock 'em dead! The Drama Club is certainly appreciative of the leadership and service of Mr. Rapp, Mr. Mulcare, and Miss Kanwischer.



More Than Admonition -- Assemblies '64-'65

In an effort to expand the scope of LCHS students the Student Council planned several all-school assemblies throughout the year. Our first guest was Mr. Schobarnn, a very accomplished pianist. Although he touched lightly on the classics, the majority of his program was popular and light classical music and very well received. Gary Erisman's first visit to LCHS was quite an eventful one. Representing the Mutual Insurance Company, he presented a driving demonstration designed to illustrate the breaking and stopping distances required at various speeds and conditions. The demonstration itself became a prime example of what can happen — even under ideal conditions. Mr. Erisman returned to present a fire safety demonstration (without incident). Mr. Ken Goodman, concert pianist, was the last guest. His program of classical secular and sacred music was obviously above the heads of most of the students, but for many it was really great. Never before has LCHS had such a world-renowned and gifted person as a guest.

Mr. Gary Erisman is one whom all of us will remember.



Later in the year Mr. Erisman returned to give a lecture on "Fire Safety."





World-traveler, organist Kenneth Goodman, shown here with Mary McIlwain, Leslie Hutchison, and Anna Catlin.

How well this moment will be recalled!



Fall and Winter Informals

Included in the category of informal dances are soc-hops and turnabouts. The soc-hop is a very popular function, although few people actually do wear socks and no one really hops. (As a matter of fact, hardly anyone even **dances!**) Turnabouts give the guys a chance to sit back and take it easy while the girls worry about tickets, transportation, and of course the big question — "Whom shall I ask?" It is interesting to note that the turnabouts are sponsored by two girls' organizations, the FHA and GAA.



Exception to the rule: Boo and Sue at the Christmas Dance.

Once again at the Christmas Dance.



Freshman Mark Ross and friend at a post-game sock-hop.



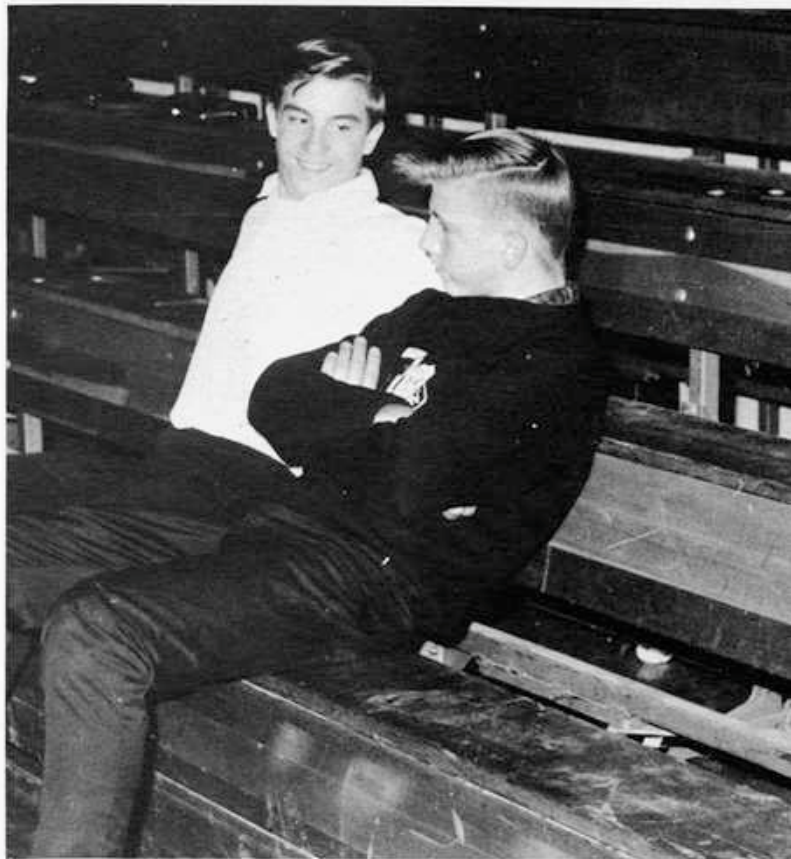


Vince Moudry and date.

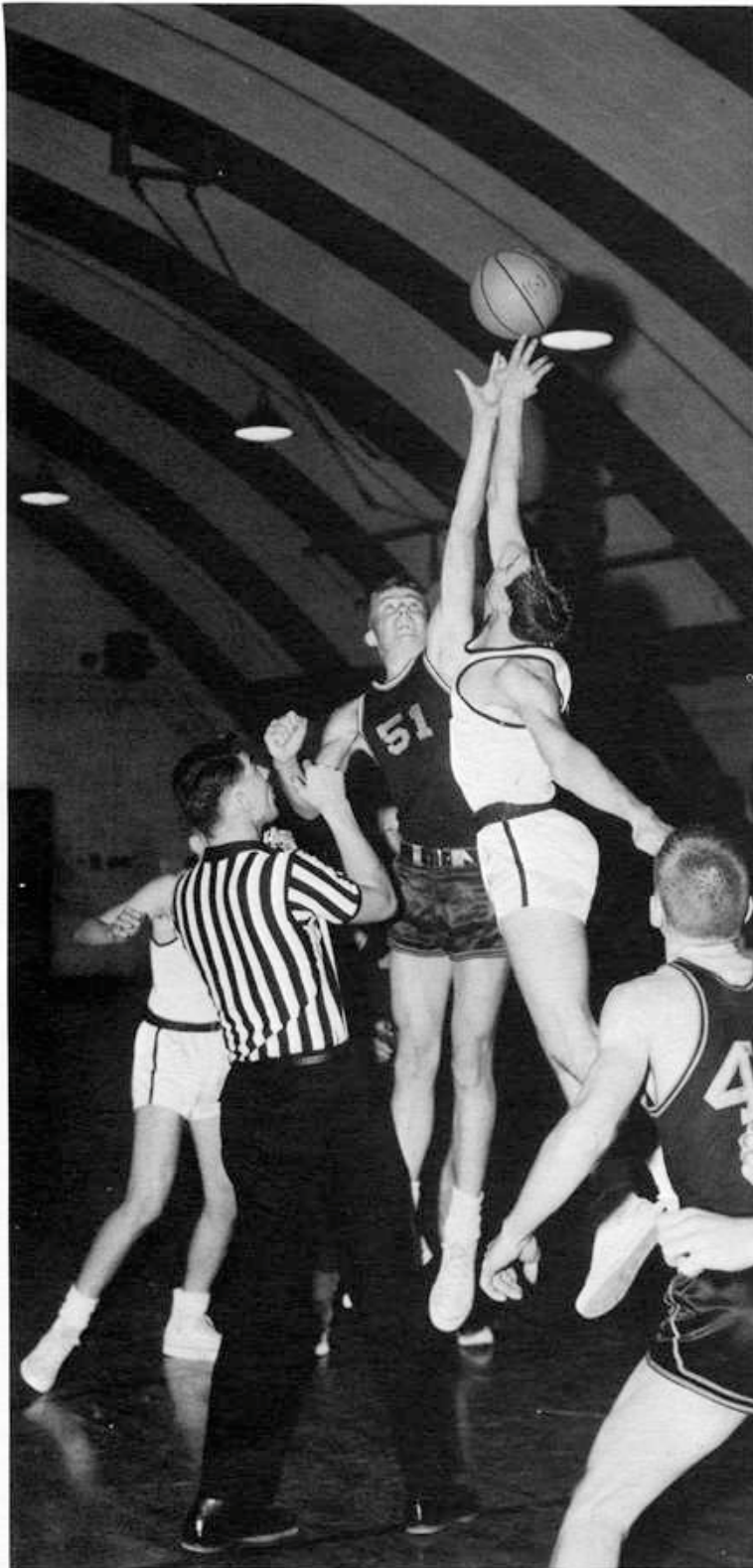
Tony Kaye and Cathy Curtin.



Gordie Plohr and Mike Klima.



Frosh-Soph Finishes with 8-11 Record



The jump looks pretty even, although Jim Montague may have an extra half-inch on his Minooka opponent.

"Desire, hustle and self discipline seem to have been the theme of the Frosh-Soph team. After winning four of their first six games, they were hit hard by the loss of their leading scorer and rebounder to the Varsity team. Later in the season, another member of the starting five transferred to a new school. Each team member seemed to work harder to overcome these setbacks and gave that second effort which carried them on to a respectable season.

"Basketball is a game requiring good body condition as well as a conditioning of the mind. A person lacking either of these traits will encounter little success in the sports field."

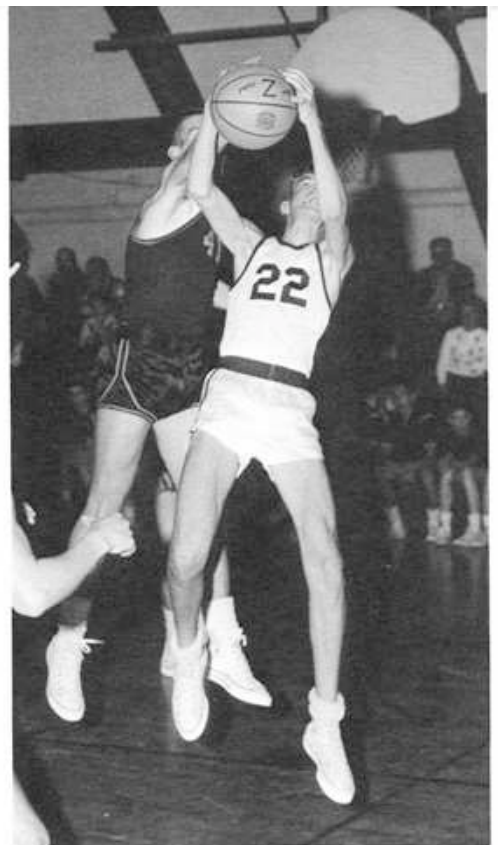
— Coach Dick Thompson

FROSH-SOPH TEAM MEMBERS Row 1: Bart Clouston, Steve Kitcoff, George Kilens, Bob Taylor, Kirby Kepford, Jim Montague. Row 2: Manager Mark James, Art Laramy, Tom Mason, John Carver, Don Boose, Bill Gabler, Roy Kruger, Coach Dick Thompson.





Huddles are frequently called to try to change the pace of a ball game, and the Lisle players appear rather distressed with the pace of this one.



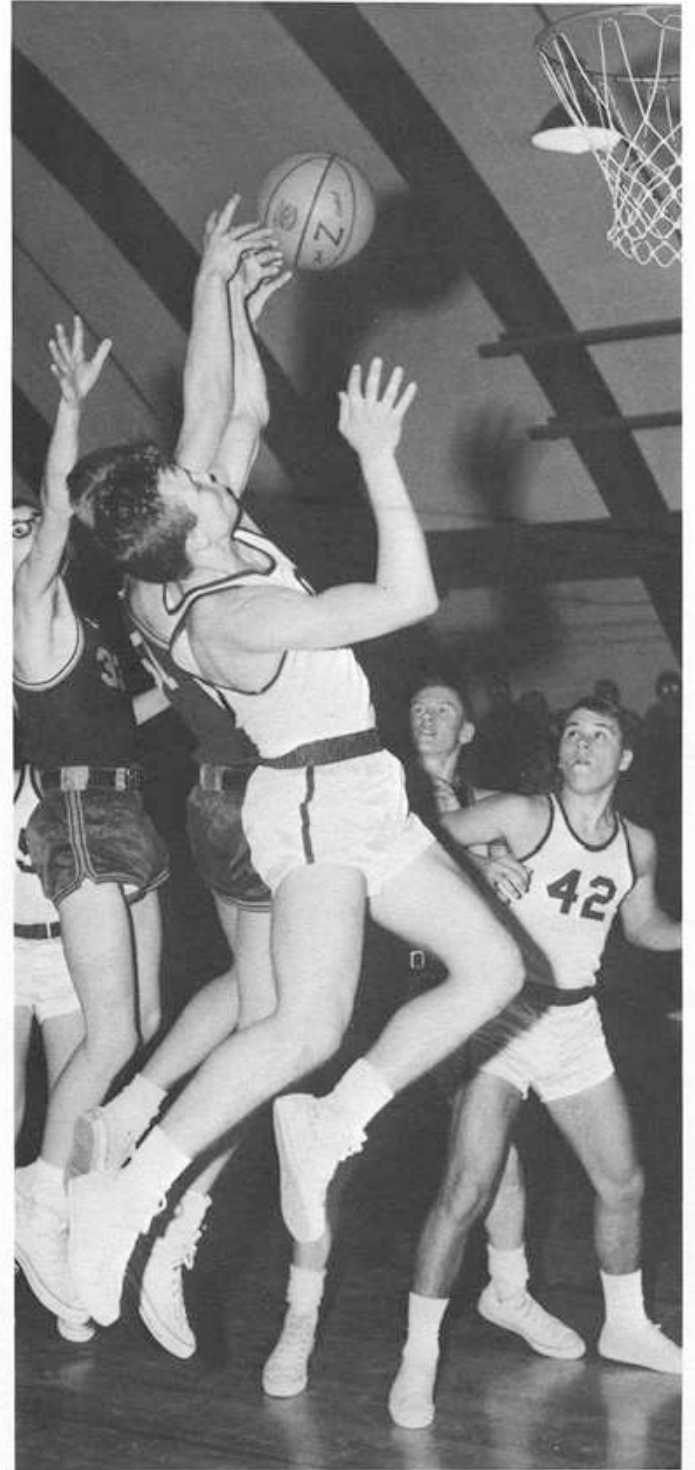
Tom Mason had to scrap for this one.



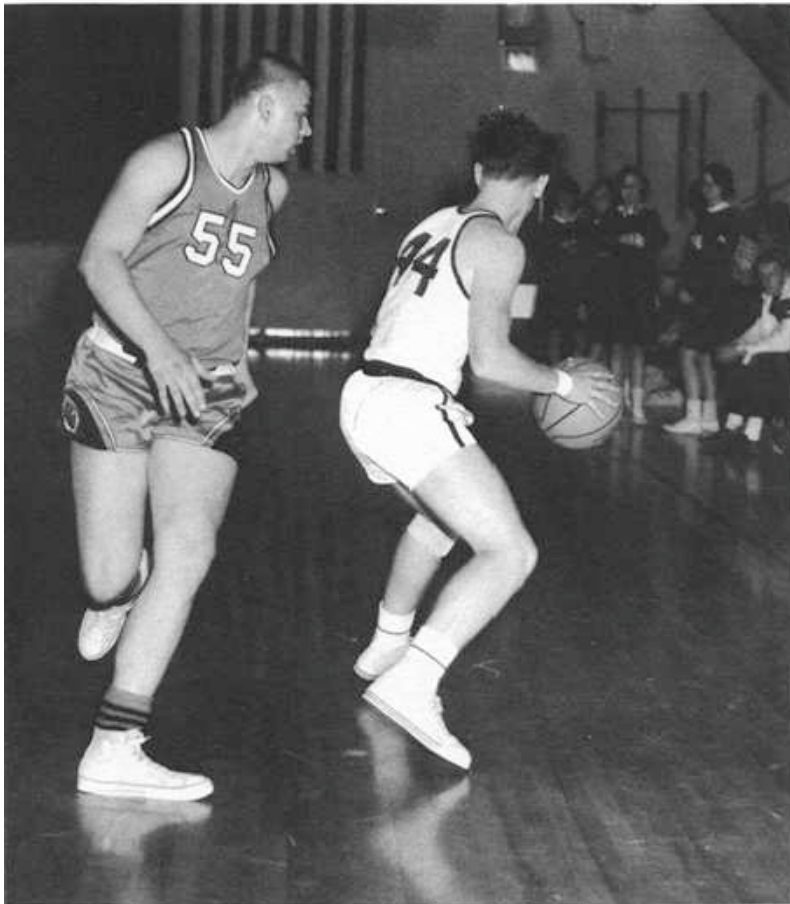
**FROSH-SOPH BASKETBALL
RECORD**

Glenbard East	55	30	Lisle
Lisle	57	34	Plano
Lisle	34	32	Lemont
Lisle	38	36	Plainfield
Minooka	49	30	Lisle
Lisle	46	39	Yorkville
Newark	25	14	Lisle
Providence	49	43	Lisle
Yorkville	70	54	Lisle
Plainfield	50	34	Lisle
Fenton	40	36	Lisle
Lemont	47	33	Lisle
Lisle	53	37	Sandwich
Minooka	47	36	Lisle
Lisle	53	35	Serena
Lisle	40	37	Yorkville
Elmwood Park	49	45	Lisle
Newark	51	39	Lisle
Lisle	46	38	Providence

Jim Montague fought hard to grab rebounds like this one for the Lisle Cubs.

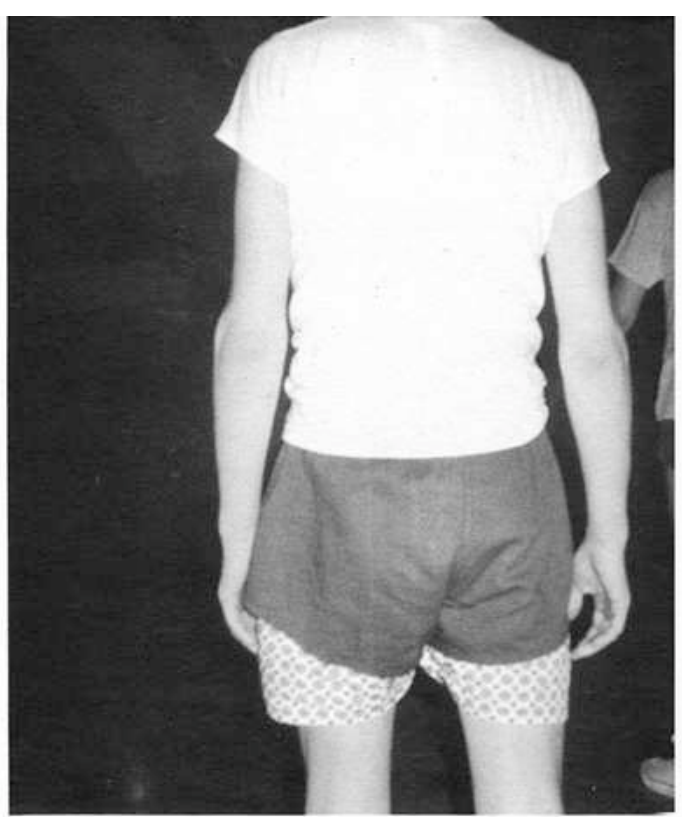


Watch out, Art!



Frosh . . .

The Basketball program at Lisle was stepped up this year to include a definite Freshman schedule, handled by Coach Bob Jones. On Saturday mornings, the Frosh faced opponents from the conference schools that the Frosh-Soph and Varsity had played the night before. The Freshman record this year wasn't impressive — but at least the program has been initiated; and the team members gained experienced which they otherwise would not have had.



The coaches can't do everything.

FRESHMAN TEAM MEMBERS — Row 1: Kirby Kepford, Greg Gorham, Don Carrie, Frank Ferrin, George Kilens, Tom Mason.

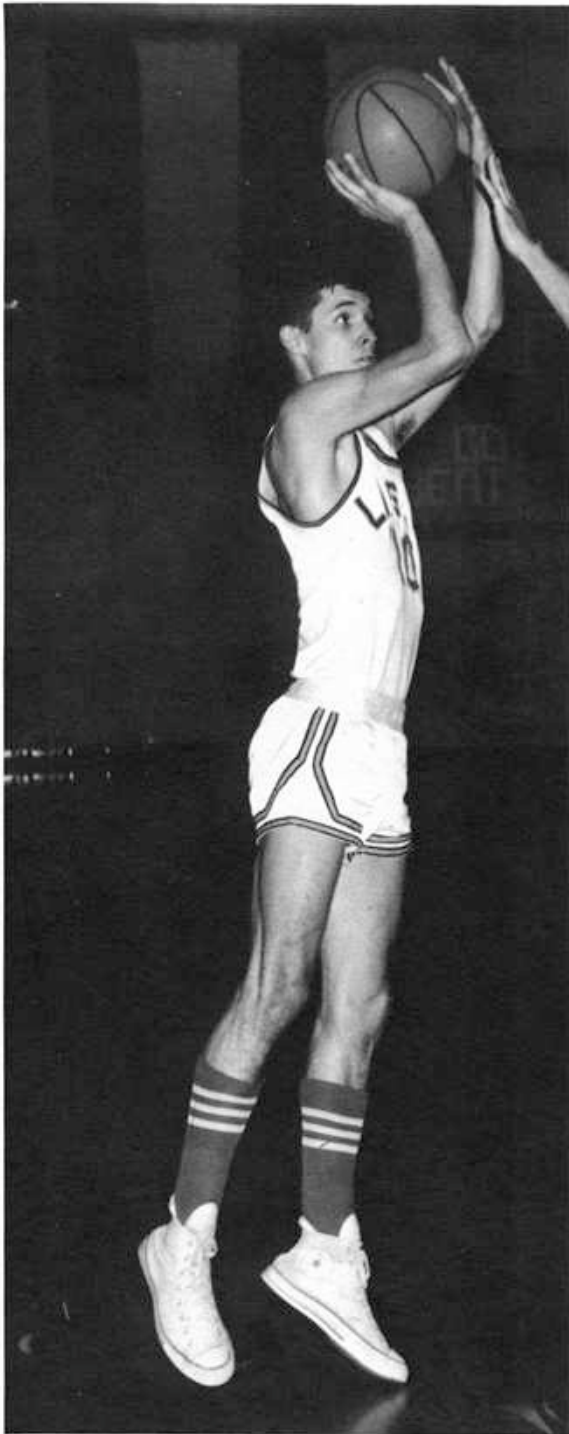
Row 2: Coach Bob Jones, Galen Jelskey, Steve Cook, Jeff Lynch, Jon Wells, Roy Kruger, Manager Jim Winn.



Opponents Prove to be Tough Competition

It was a disheartening season for many — one that began with high hopes and expectations. There was the opening loss to powerful Glenbard East which everyone shook off and looked for better things to come. And they did, for a while. There was the victory against Plano, two setbacks at the hands of Lemont and Minooka, but two more wins over Plainfield and Yorkville. At this point the Lions entered the annual Plano Holiday Tournament, where they made history by winning the first game over Hinkley-Big Rock. But then the unaccountable Fate stepped in. The Lisle Varsity first fell to eventual Tournament Champ Hiawatha (77-69, the closest battle for them) and then to Mazon. Those two games initiated a long, disappointing losing streak for the Lions.

VARSITY TEAM MEMBERS — Row 1: Dan Proud, Gary Stanley, Boo Luther. Row 2: Rick Simonson, Rich Mason, Dwight Hoffman, Jim DeGraff, Bill Roge.



Senior guard Boo Luther provided a sure scoring threat.



Throughout Season

There remained one moment of glory. Providence of New Lenox invaded the Lisle gym, having defeated the Lions previously. Lisle earned a first-quarter lead (seldom done) but saw it vanish before halftime, as Providence led 32-29. The half that followed saw an eventful see-saw battle. All the color of a basketball game was there. The atmosphere was more like that of a championship game; the gymnasium was packed with rabid fans. The last quarter saw the score still deadlocked until Providence ran into foul trouble. Anyone who was present will easily recall the explosive moments following a double technical foul against New Lenox. From this point on the Lions proceeded to emerge victorious — not erasing the memories of a season, but certainly soothing a few wounds.

Row 1: Bob Montague, Don Beals, Mike Williams, John Catlin.
Row 2: Ed Rychtarik, Tom Hoffman, Paul Havenar, Coach John Ciesielski.



Paul Havenar's aggressiveness earned him the title of "Mr. Hustler" more than once.

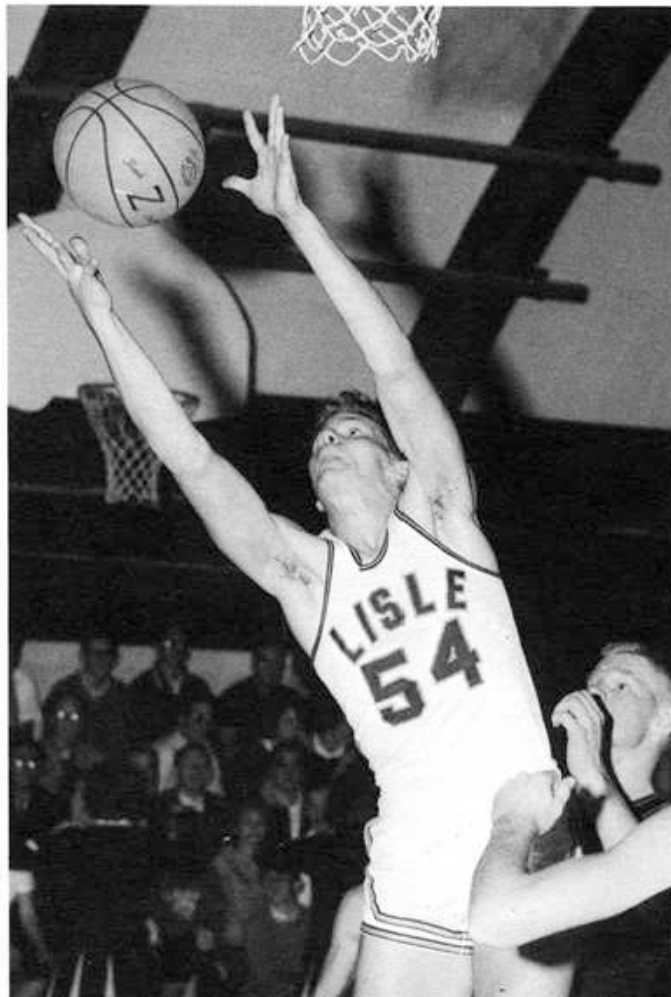


Rich Mason on a drive against
Minooka . . .

"What we're trying to do is to strengthen the basketball picture at Lisle. Basketball is a large and time-consuming effort. The coaching staff has been encouraging all team members and prospective players to 'have a basketball in hand the year around,' with the obvious idea that the more one practices, the more he improves. Also, the player won't have to spend the first few weeks of the season familiarizing himself again. This is all part of the whole program — one designed for all levels of play.

"In practice, the emphasis is given to the fundamentals of basketball, with the realization that time is the determining factor — it takes time and effort to make ballplayers. We'll simply have to 'shake off' this year and come back fighting — next year, and the next, and the next. With these objects in mind, we are looking for a bright future."

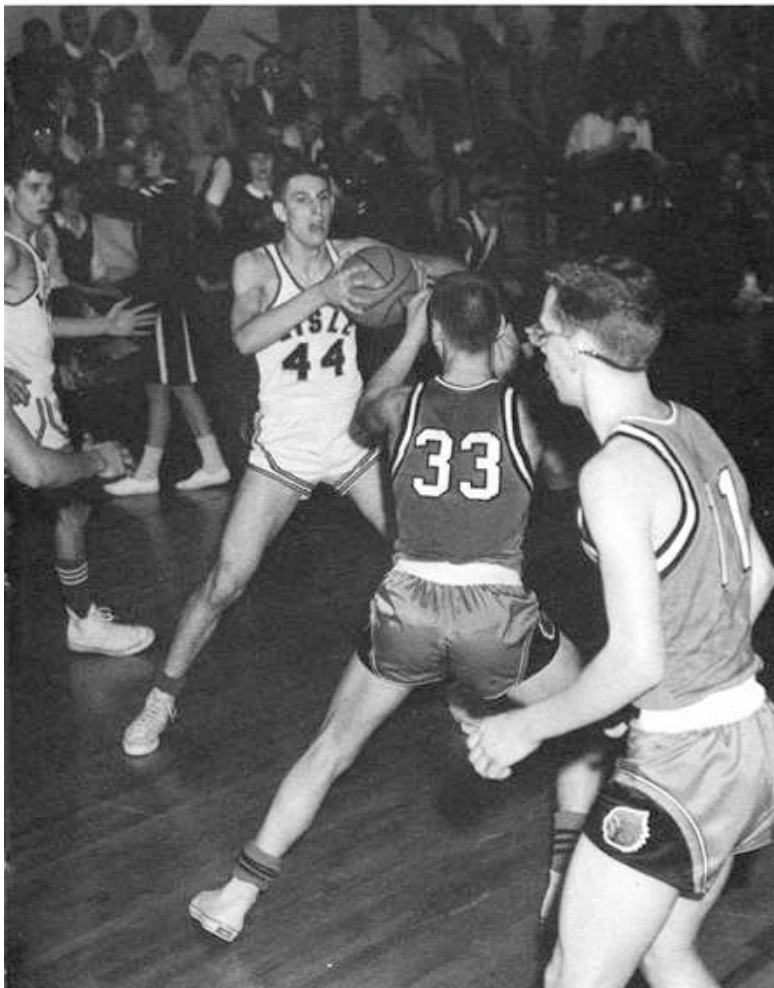
—Coach John Ciesielski



while Bill Roge picks off a rebound.



During the Sandwich game, a time-out finds the Varsity members in quick conference with Coach Ciesielski.



Boo Luther and Dwight Hoffman running an offense pattern.

BASKETBALL 1964-65 RECORD			
Glenbard East	75	48	Lisle
Lisle	67	63	Plano
Lemont	45	34	Lisle
Lisle	72	58	Plainfield
Minooka	70	61	Lisle
Lisle	54	52	Yorkville
Lisle	64	61	Hinkley- Big Rock
Kirkland	77	69	Lisle
Mazon	68	55	Lisle
Newark	60	38	Lisle
Providence	64	55	Lisle
Yorkville	76	59	Lisle
Plainfield	90	64	Lisle
Fenton	71	61	Lisle
Lemont	59	49	Lisle
Serena	68	45	Lisle
Minooka	75	68	Lisle
Sandwich	62	44	Lisle
Yorkville	49	33	Lisle
Elmwood Park	77	62	Lisle
Newark	66	44	Lisle
Lisle	62	54	Providence
Oswego	74	45	Lisle

Something New . . .



Precision is essential — but hard to attain.



FROSH-SOPH SQUAD: Sue Taylor, Dianne Woods, Linda Carothers, Joan Kramer, Pam Gabler, Anna Burden. Not pictured: Hope Rice.

Lion Mascot Sara Martin added color and variety to home games.



Something Blue . . .

Something New . . . "new" became a frequently-used word at LCHS this year, and the cheerleaders were no exception. With the increase in the number of girls on each squad from five to six, new routines and formations were necessitated. Constant practice during the summer led to many new routines and ideas for promoting school spirit.

Something Blue . . . Many summer hours were spent earning money for new uniforms and emblems. With the help of their mothers and members of the community, the cheerleaders conducted a very successful bake sale and car wash (ooh . . . those sunburned shoulders!).

Miss Parent, the cheerleaders' advisor, has spent many hours with both squads in an attempt to make them as polished as possible, besides going to almost every game. To the cheerleaders, having the advisor at every game was a new experience — and often an interesting one.



The Varsity squad spent the summer and early fall working on fund-raising projects such as the sale of blue and white feather puff balls. The money from the project, which was initiated by the Parents Group, was used to purchase new uniforms.

VARSITY SQUAD: Mary Beth Pechous, Sue Williams, Suzie Morris, Marsha Pechous, Linda Skalic, Holly Minnick. Not pictured: Carol Soderlund.



Faculty Barely Edges a Rough Senior Squad

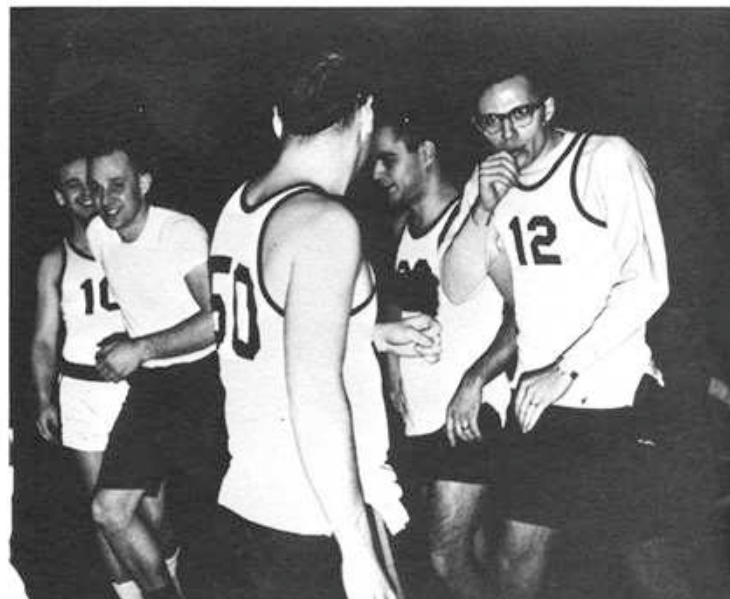
One of the more popular all-school assemblies was that of the annual Senior-Faculty Basketball game. The faculty was represented by such stars as Jellyroll Jones, Cerebral Palzer, Slinky Samide, Bulldozer Bark, Butcher Castino, and Digger Ciesielski. It was the type of game that wasn't decided until the end. The faculty built up a slim 15-point lead in the first half and attempted to coast on to victory. The aggressive seniors made repeated efforts to cut the lead but were unsuccessful. Need more be said? The faculty finally won 37-25. Climaxing an exciting afternoon of basketball at its best, the faculty team was presented with an elaborately constructed trophy.

"an exciting afternoon of basketball"



"the elaborately constructed trophy"

"faculty stars"



Debate . . .

Lisle's Giant Killers

The most recent active organization at LCHS is the Debate team, formed this year by Coach Dan Whitmarsh. The argumentative talents of the members (Susan Sprietsma, Jon Cudworth, Doug Jensen, Otto Kindshoven, Linda Coffey, Gale Powers, Laurel Stanley, Jeff Trostad, Cliff Murphy, and Mike Athey) have proved to top rate. The debaters gave each of their formidable opponents a battle; they faced, in various tournaments, such teams as Naperville (Novice Tourney), Palatine, Willowbrook, Lemont (FVC Tourney), and Thornton (State Tournament). Lisle placed third in the Palatine Tourney, tied for first in the FVC, and won half their matches in the state competition. The debate prospects for the future are bright, indeed, evidenced by the fact that every member of this year's team will be returning next year.



One of the affirmative spokesmen,
Jon Cudworth.



Debaters Otto Kindshoven, Sue Sprietsma,
Doug Jensen, Jon Cudworth, and Linda
Coffey.



SERVICE

. . . willingness to cooperate with each other to attain definite goals in concert.





President Paul Havenar at the Christmas Dance.



The FHA booth at the Jamboree was especially enjoyed by the youngsters.

We begin our **Service** section with the **Student Council**, the only elected organization in our school. The Council performs services in many ways: it acts as a liaison between students and administrators, it organizes and sponsors many annual events—Homecoming, all-school assemblies, the Christmas Dance, the Talent Show, and the Jamboree; and it issues concession bids to classes and other organizations. Moreover, this year's Council has initiated the Foreign Exchange Program at Lisle, which will enable a student from a foreign country to live in Lisle and study at LCHS. This long-coveted dream will soon become a reality.





Never let it be said that Mr. Bark wouldn't back Student Council activities 100 per cent!



The Calendar Committee was indirectly responsible for Mr. Hettinger spending several Saturdays cooking hamburgers.



STUDENT COUNCIL — Row 1: Lee Hankinson, Linda Carothers, Gary Tsukuno, Roy Kruger, John Catlin, Jim Montague, Jim DeGraff, Tim Hoffman, John Carter. Row 2: Alan Carter, Daryl VanKampen, Dianne Woods, Hope Rice, Dwight Hoffman, Tom Nichols, Howard Bradley, Jacquie Wurth. Back Row: Mary McIlwain, Vice-President; Joe Siebert, Treasurer; Paul Havenar, President; Karen Wood, Secretary; Mr. Richard Bark, Advisor.

Service takes time, and some of the most time-consuming activities are the **Library Aides**, the **Audio-Visual Aides**, and the **Hall Monitors**. The primary role of the student assistant in the library is to free the librarians for more professional work by taking over routine tasks. An effort is made to increase the aide's understanding of library methods and procedures, and through her to provide better library services to the school. Audio-visual aides are entrusted with a great deal of expensive, and sometimes complicated, equipment. Along with this goes the added responsibility of giving up study halls so that other students may benefit. Hall Monitors give up valuable study time so that teachers and administrators won't have the tedious task of babysitting for people who roam the halls. They are also responsible for seeing that visitors are greeted and aided in any way possible.



LIBRARY AIDES — Sitting: Bobbi Moss, Judy Zekl, Sue Dudley, Kay Diehl, Suzanne Sprietsma. Standing: Patricia Kendall, Rae Knox, Mary McIlwain, Linda Thompson, Jo Wells, Carol Anderson.



AUDIO-VISUAL AIDES — Sitting: Dennis Brinegar, Mark Hansen, Russ McIlwain, Larry Froehlich, Jim Sloup. Standing: Terry Kimes, Bill Smith, Ray Crow, Mike Janis, Gary Stanley, Ray Koniecke, Dwight Brenstein, Bill Thomas.



HALL MONITORS — Seated at desk: Linda Bumber. Seated on table: Paul Havenar, Kate Hlivjak, Boo Luther. Standing: Carol Soderlund, Alice Dyntera, Hope Rice, Russ McIlwain, Holly Minnick, Jim Sloup, Mike O'Connor, Don Beals, Mary Ann Patten, Bob Montague, Louise May, Pat Mlnarik, Sherry Lockett.



CHORUS — Front Row: Penny Hodous, Judy King, Pat Jones, Mary Beth Pechous, Sue Williams, Rick Wheeler, Frank Ferrin, Jo Schmidt, Suzie Morris, Cathy Curtin, Pam Wilson, Pat Peters. Second Row: Rae Knox, Dawn Wright, Anna Catlin, Jeff Trostad, David Williams, Sally Monroe, Pam Riske, Judi Paulsen, Shirley

Roch, Sue Schmidt. Third Row: Karen Wood, Janet Martin, John Catlin, Bob Taylor, Tony Kaye, Don Barta, Arlene Jylland, Debbie VanRyn. Fourth Row: Hope Rice, Gerri Stanek, Howard Bradley, Dwight Hoffman, Richard Mason, Terry Tumo, Helen Barta, Leslie Hutchison, Laurie Stanley, Mary Edwards.



A very popular outgrowth of the chorus was the barbershop quartet, "The Bluegrass Four": Richard Mason, Bob Gihle, Dave Wheeler, Dave Leigh.

Next we come to the **Chorus**, which performs for the school twice during the year, at the Christmas and Spring Concerts. This was the first year that the Chorus and Band gave separate concerts, an idea which was quite well accepted by all. Aside from the preparation for these formal concerts, a great deal of time is spent on the mechanics of singing, such as tone quality, breath control, and enunciation. LCHS has always been well-represented by the chorus, whose members have participated in the Illinois State Music competition, the District One Music Festival, and have taken trips to Sandwich High School and Marshall Field Department Store in Oak Brook.



Mrs. Strayer, holding her "thank you" gift from the chorus, appears pleased with the performance.



One of the most familiar sights around LCHS is the **Band**. Each year there are new faces, and new music, and different formations; but there is always the same pride in performance, the same desire to develop talent, and always those wool uniforms in the hot September sun. The Band has given us good reason to be proud. Whether they are marching on the football field, playing the school song at half-time of a basketball game, or giving one of the two concerts they give each year, the members of the band can always be counted on to perform to the best of their ability. Evidence of their accomplishments can be seen in the many awards brought home from state competition and the satisfaction of school and community.



Band Major and Majorettes: Tom Nichols, Helen Barta, Barbara Hammer, Wendy Sikorski.



BAND — Column 1: Steve Cook, Hope Rice, Wendy Sikorski, Barb Hammer, Bill May, Bob Montague, Jim Tibbits. Column 2: Cliff Murphy, Susan Nichols, Ed Wright, Bill Smith, Mike Athey, John Carothers. Column 3: Linda Carothers, Pat Jones, Joe Ingram, Sue McMahon, Julia Straub, Fern Johnson. Column 4: Pam Gabler, Dennis Beals, Linda Byrd, Ed Jones. Column 5: Kathy Homan, Bruce Frey, Tom Nichols, Barry Melton. Column 6: Dale

Reed, Sue Mulkins, Sue Sprietsma, Kay Diehl. Column 7: Nancy Burkman, Rick Simonson, Helen Barta, Sue Zinner, Jim Montague, Greg Gorham, John Carter. Column 8: Bill Shultz, Dan Proud, Spencer Leigh, Terry Kimes, Gary Seaton, Jon Cudworth. Standing: Mr. Robert Bartelt (director), Don Barta, Gordon Plohr, Alan Carter, Bill Gabler, Ed Eble.

The true services of the **FUTURE HOMEMAKERS OF AMERICA, FUTURE TEACHERS OF AMERICA, and FUTURE NURSES OF AMERICA** are not evident now; the clubs are composed of those with an inclination to serve, in their various capacities, in the **FUTURE!**



FUTURE HOMEMAKERS OF AMERICA — Row 1: Anna Catlin, Linda Carothers, Anna Burden, Bobbi Moss, Mary Edwards, Kathy Dubin. Row 2: Carol Anderson, Pat Kendall, Carol Lenard, Mary Buttry, Mary Ann Patten, Sherry Lockett, Penny Hodous, Sue Curtin, Barb Hammer, Linda Leja, Kathy Kemerling, Ellen Koba, Stephanie Johns, Mrs. Johansen (advisor). Row 3: Mariloral Kincaid, Cathy Strauley, Judy McIlwain, Diane Woods, Pat Jones, Sue McMahon, Debby Beaderstadt, Karen Wood, Mary McIlwain, Kate Hlivjak, Diane O'Connor, Pam Gabler, Dale Reed. Row 4: Hope Rice, Geri Stanek, Lynn Kalaher, Liz Pipek, Linda Lewis,

Marsha Pechous, Carol Soderlund, Sara DeMeo, Cathy Curtin, Pam Wilson, Pat Matucci, Bonnie Liaromatis, Dawn Wright, Shirley Plankinton. Row 5: Kathy Homan, Sue Blindt, Nancy Heitz, Martha Craig, Daryl VanKampen, Sue Szal, Lynne Zettel, Bobbie Blevins, Rae Blevins, Barbara Rittgarn, Rae Knox, Debbie Bates, Sue Taylor, Betty Dyntera, Linda Coffey, Linda Byrd. Row 6: Verna Jones, Peggy Kral, Carla Benefield, Arlee Spence, Sandra Bakken, Margaret Braithwaite, Shirley Roch, Sue Zinner, Pam Riske, Jo Schmidt, Diane Kendall, Chris Woolverton, Judy Westerohoff, Linda Trostad.



FUTURE TEACHERS OF AMERICA — Front Row: Don Schmoker, Mike Janis. Second Row: Bill Schultz, Nancy Lindgren, Kate Hlivjak, Sara Martin, Boo Luther. Standing: Gail Powers, Lee

Hankinson, Holly Minnick, Jan Brinkmeyer, Mrs. Prokop (advisor), Sue Williams, Sue Mulkins, Chris Woolverton, Carol Gondolfo, Kathy Dubin.

FUTURE NURSES OF AMERICA — Kneeling: Cathy Homan, Sherry Gamble, Sally Monroe, Linda Carothers, Mrs. Verna Minnick (advisor), Sherry Lockett, Wendy Sikorski, Sue McMahon,

Beth Baker. Standing: Ellen Koba, Diane O'Connor, Dale Reed, Pam Gabler, Karen Kroener, Audrey Yackley, Mary Beth Pechous, Sue Williams, Jacquie Wurth, Carleen Nelson.





NEWSPAPER STAFF — Kneeling: Gloria Swink. In Chairs: Kate Hlivjak, Sara Martin, Judy Kekl. Row 1: Bill Smith, Howie Bradley, Mike Janis, John Catlin (editor), Bill Hayes, Bobbie

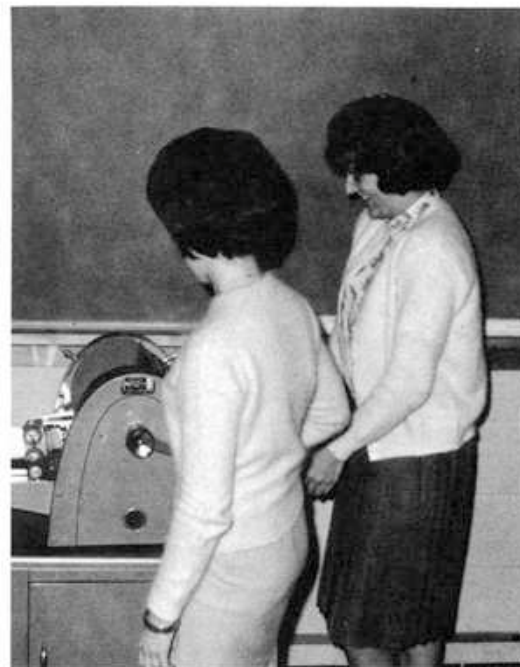
Moss. Row 2: Kay Diehl, Carol Soderlund, Linda Trostad, Lynne Zettel.

The **Roar**, published six times this year, is the **Newspaper Staff's** publication. The staff is already making plans for the coming years — perhaps the purchase of a printing press — to truly strengthen the journalistic side of LCHS. A unique feature of this year's Roar has been the addition of pictures.

Bill Hayes, Gloria Swink, and John Catlin progressing toward a deadline.



The projects and activities of the **Commercial Club** are many and varied. The club is responsible for designing and duplicating the programs for the concerts, assemblies, and plays throughout the year. Activities have included field trips to Eastman Kodak and other local businesses.



Mary Ann Patten and Karen Wood at work on the mimeograph machine.

COMMERCIAL CLUB — Row 1: Kathy Dubin, Mary Ann Patten, Sherry Lockett, Kay Diehl (president), Karen Wood, Alice Dyntaxa,

Mary Edwards. Row 2: Marsha Pechous, Carol Soderlund, Mike O'Connor.



Joe Siebert, Dennis Belom, Terry Tuma, and Mary McIlwain counting (?) a day's receipts from yearbook sales.



Rich Mason, Leslie Hutchison, and Beth Pechous discussing possible layouts for the Service section.



Gloria Pehlke and Kate Hlvijak displaying their artistic talents as they prepare posters for the Pan-
cake Breakfast.

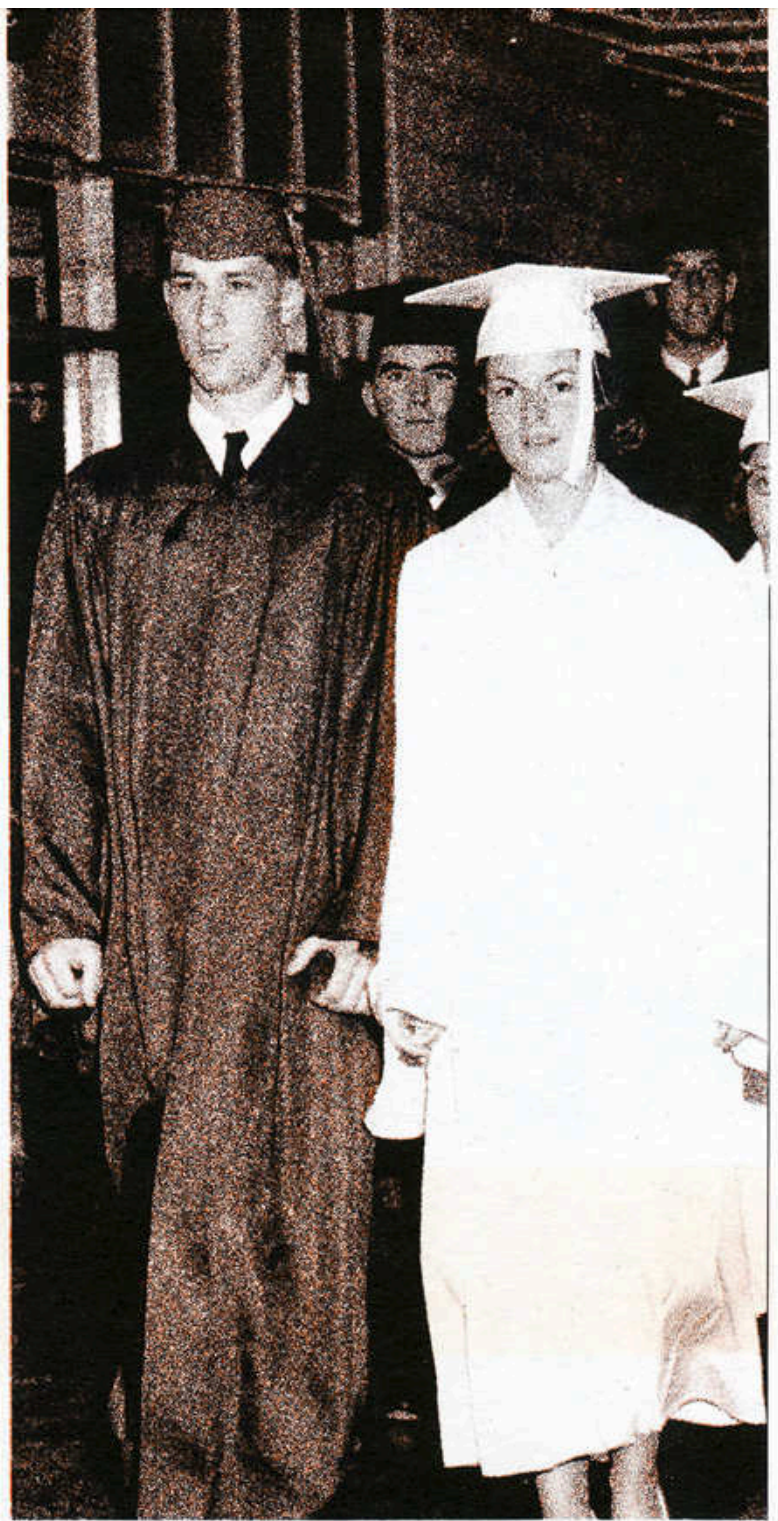
The **Vale Staff** is the producer of this book (and historian for the year 1964-65). For us it has meant many hectic months, for ours has been the frustrating but rewarding task of recapping this year — our year — as it really happened. The staff members will long remember some of the wild Sunday adventures where occasionally something remotely connected to yearbook was accomplished; and we will also remember the enthusiasm and dedication of each individual member as we worked together to complete this book. But the Vale Staff had more responsibility than just meeting deadlines to get the yearbook out on time. Being a self-supporting organization, the staff had the added responsibility of raising the \$3,000 needed to produce a worthwhile yearbook. This was done in various ways, such as sponsoring the Pancake Breakfast during Homecoming, concessions, sock-hops, ads, and the initial yearbook sales.

65 VALE 1965 VALE

VALE STAFF — Kneeling: Mary McIlwain and Terry Tuma. Sitting: Rich Mason. Standing: Jacquie Wurth, Kate Hlivjak, Leslie Hutchison, Pat Jones, Dennis Belom, Beth Pechous, Jan

Brinkmeyer, Gloria Pehlke, Bill Shultz, Linda Skalic, Joe Siebert, Rick Simonson, Jo Wells, and Bob Moudry.





SCHOLARSHIP

... those people by whose motivation, cooperation, and abilities the successes of a school year are determined.





MR. RAYMOND MILLER
Superintendent of Schools



MR. WILLIAM KNOOP
Ass't. Sup't. in Charge of Business Affairs



MRS. BETTE SHULTZ
Library Assistant



MRS. ROSEMARIE EVERETTE
School Secretary

ADMINISTRATION



MR. GENE CUSIC
Principal



MRS. MARIE RADA
Secretary



MR. ROGER BUSHDIECKER
Guidance, Assistant Varsity Football Coach



MRS. HELEN LINDEMANN
Secretary



MR. RICHARD THOMPSON
Guidance, Typing, Frosh-Soph
Basketball Coach

FACULTY



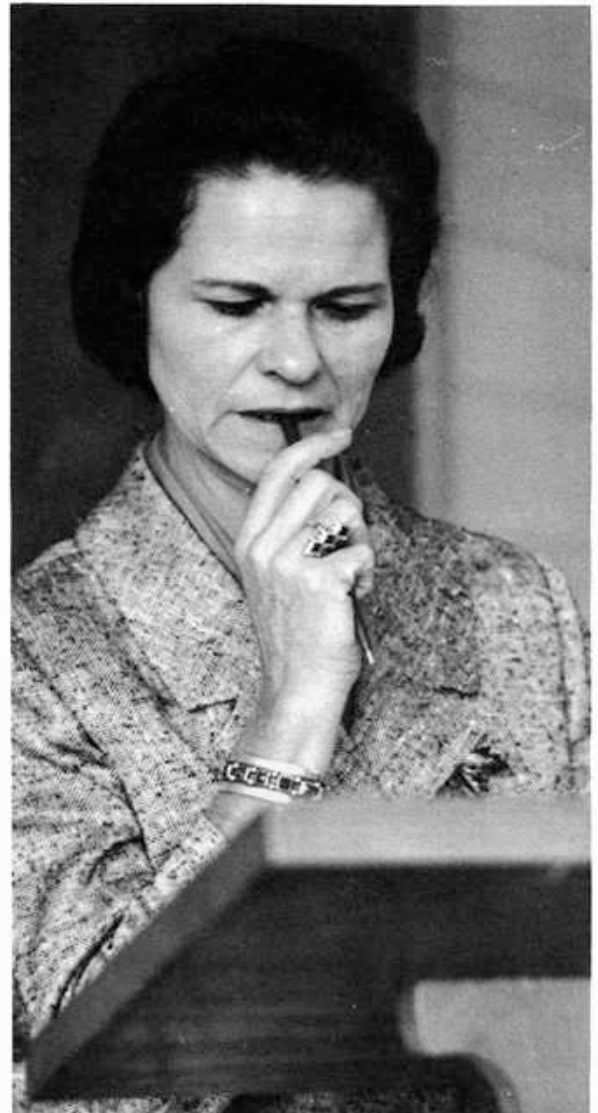
MRS. ANN JOHANSEN
Home Economics, FHA Advisor



MR. JOHN CIESIELSKI
Science, Lettermen's Club, Varsity Basketball Coach,
Varsity Track Coach



MRS. MARGARET GOODELL
Spanish, Spanish Club



MRS. VERA BLAZEK
French, English, French Club



MR. ANTHONY CASTINO

Social Studies, Senior Class Advisor, Frosh-Soph Football Coach



MR. CLARENCE JENSEN

Science, Audio-Visual Advisor,
Science Club Advisor



MR. MICHAEL HETTINGER

Mathematics, Junior Class Advisor



MR. WILLIAM FEE

Industrial Arts, Boys' P.E.,
Pep Club Advisor,
Assistant Frosh-Soph Football Coach



MR. RICHARD BARK

Mathematics, Student Council



MR. ROBERT BARTELT

Band



MR. GEORGE RAPP
Social Sciences, Drama Club Advisor,
Baseball Coach



MR. RICHARD PALZER
English, Assistant Debate Coach



MRS. RUTH MICHAEL
English, Newspaper



MISS MARY PARENT
Girls' P.E., G.A.A., Cheerleaders



MR. ROBERT JONES
Business Education, Social Sciences,
Freshman Basketball Coach



MISS MARILYN KANWISCHER

Business Education, Yearbook Advisor, Commercial Club

MR. JOHN MULCARE

Science, Sophomore Class Advisor, Science Club Advisor



MR. GAROLD SAATKAMP

Industrial Arts

MRS. LEOTA PROKOP

English, Future Teachers of America



One of the greatest advantages of a smaller school such as Lisle is the student-faculty relationship; the teachers are able to devote more time to a majority of students. The appreciative student is thereby able to benefit from his contact and association with the teacher — the teacher who not only instructs, but also leads, sets an example, and perhaps provides the greatest all-encompassing influence on the student.



MRS. WINNIFRED SHANNON
Librarian, Latin



MISS SARA VIRGIL
Art, Art Club



MRS. ELEANOR STRAYER
Chorus



MR. ANDREW SAMIDE
Mathematics, Freshman Class Advisor



MR. DAN WHITMARSH
English, Debate,
Varsity Football Coach

STAFF



MR. CLARENCE WILDE
Custodian



MR. AL VOIGHT
Custodian

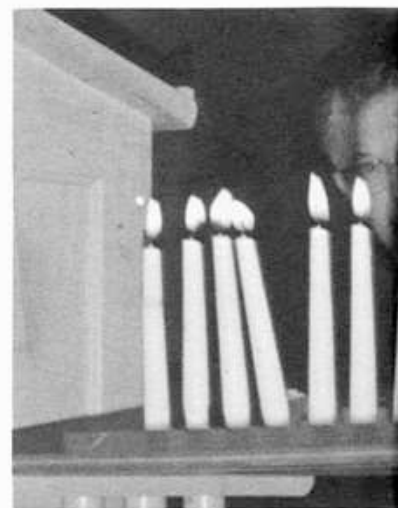


MRS. LEONA DAVIS, MRS. GRACE SIEBERT, MRS. LORRAINE FRASER, MRS. IRENE BURKMAN.

Honors Day To Top



NHS Senior Members — Row 1: Bob Bain, Howie Bradley, Bill Schultz, Terry Tuma. Row 2: Mary Edwards, Louise May, Judy Zekl, Suzie Morris, Gloria Swink. Row 3: Dwight Hoffman, Mary McIlwain, Joe Siebert, Anna Catlin, Leslie Hutchison, Richard Mason.



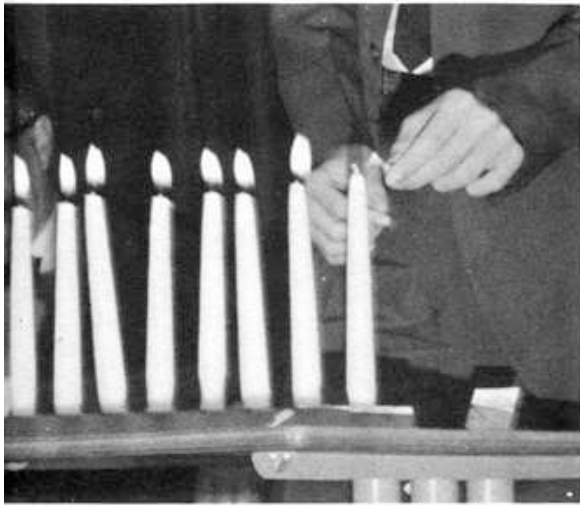
Unable to keep her surprise and joy inside, Beth Pechous displays her emotion as Howie Bradley escorts her to the stage to receive her NHS pin and corsage.

In the fall of the year, students of the Junior and Senior classes who have exhibited outstanding leadership, spirit, service, and scholarship are recognized at the **National Honor Society** Assembly. Later in the year honors are again bestowed upon students for various services to the school at the **Honors Assembly**.



Sara Martin beams as Leslie Hutchison pins on her corsage.

And National Honor Society Give Recognition Students For Their Long Hours of Labor



Sue Gabler, Rich Mason, and Mike Adamec seem to have forgotten all the hours of hard work as they accept their yearbook awards from Miss Kanwischer.



Cheerleaders can often be found laughing, and Honors Day is no exception.



Art Club—Geri Griffiths, Tricia Kendall, [unreadable], Kate Hlivjak, Karen Johnson, Jacquie Wurth, Boo Luther, Kurt Kulp, Terry Cinert, Sara DeMeo, Sandy Starke, Jerry Snow.

Science Club—Row 1: Elmer Grundst, Bill May, Suzanne Sprietsma, Gloria Swink, Carol Anderson, Jim Tibbitts. Row 2: Howie Bradley, Rod Perry, Steve Roake, Bill Shultz, Joe Siebert, Terry Tuma, Rick Simonson, Jim De Graff. Row 3: Bob Bain, Terry Kimes, Mr. Mulcare (sponsor), Walter Lockett, John Catlin.

Art, Science, And Provide Outlets



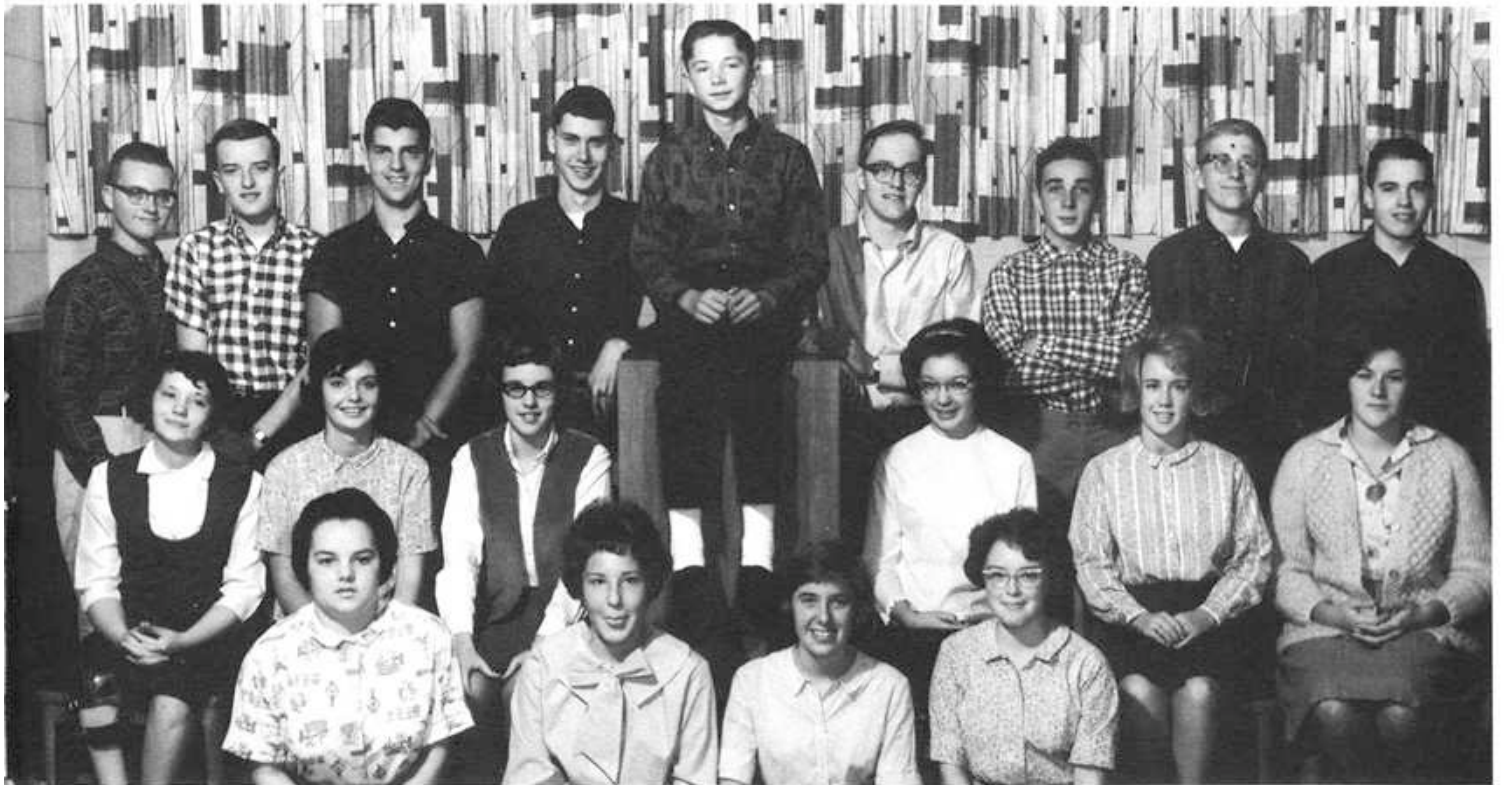
Carlos Miguel Calderon
from Santiago de Chile.



Spanish Club—Seated: Dale Brockman, Betty Dyntera, Mrs. Goodell (sponsor), Linda Coffey, John Catlin. Standing: Judy Saltis, Nancy Lindgren, Mary McIlwain, Loren Sirko, Lee Hankinson, Chris Woolverton. Top: Judy King, Pat Jones.

Language Clubs For Interests

French Club—Kneeling: Bobbie Moss, Judy McIlwain, Suzanne Sprietsma, Arlee Spence. Seated: Carol Anderson, Linda Thompson, Anna Catlin, Louise May, Cathy Curtin, June McCrossin. Standing: Mike Janis, Bill Hayes, Ed Blindt, Bill Shultz, Ed Fraser, Joe Siebert, Jim Sloup, Terry Tuma, Bill Smith.



Class of 1966



JUNIOR CLASS OFFICERS: Jan Brinkmeyer, Treasurer; Dan Proud, President; Linda Skalic, Secretary; Sue Williams, Vice Pres.



Bill Adamec



Myron Armbruster



Helen Barta



Don Beals



Dennis Belom



Carla Benefield



Norma Benson



Larry Bice



Dwight Brenstein



Jan Brinkmeyer



Nancy Burkman



Cathy Cantwell



Mike Carrie



John Carter



John Catlin



Helen Christ



Craig Clouston



Marty Corso



Georgia Decker



Jim DeGraff



Linda Donaldson



Eilleen Dooley



Sue Dudley



Mike Ehart



Sandy Fuqua



Ted Garringer



Margaret Gendvil



Jon Govi



Geri Griffiths



Bob Gross



Mark Hanson



Ron Heitz



Jim Herlien



Janet Jeffery



Don Johnson



Karen Johnson



Diane Kendall



Lana King



Jerry Koff



Rich Korbar



Mary Kowalczyk



Peggy Kral



Sue Laramy



Fran Lemons



Jerry Lewis



Linda Lewis



Nancy Lindgren



John Lindsay



Joan Liszka



Walter Lockett



Wayne Losic



Janet Martin



Sara Martin



June McCrossin



Russell McIlwain



Don McKibben



Barry Melton



Holly Minnick



Pat Mlnarik



Audrey Monroe



Doug Monroe



Sue Mulkins



Larry Murdock



Sue Nichols



Pat O'Connor



Jerry Pearce



Mary Beth Pechous



Gloria Pehlke



Bob Pippenger



Dan Proud



John Reavy



Chris Reeck



Sue Rigler



Bill Roge



Dolores Saltis



Jim Sanders



Rich Saraga



Liz Schuenemann



Nancy Lindgren and Pat O'Connor begin the inevitable task of decorating for the Homecoming dance, which called for hundreds of blue and white balloons.

This year was quite an experience for most Juniors — challenging, to say the least, largely because of the many new responsibilities laid before them. They can look back on many things, perhaps with a snicker or smile of pride; Homecoming 1964, the all-night ordeal of their first prize float; decorating "Storybook", the first of many dances they would be planning; and finally the Junior-Senior Prom, their final objective.



Jim Sedlock



Mike Sikorski



Rick Simonson



Linda Skalic



Jim Smrt



Jerry Snow



Suzanne Sprietsma



Bill Stookey



Julia Straub



Mike Trayer



Gary Tsukuno



Debbie VanRyn



Mike Williams



Sue Williams



Chris Woolverton



Madeliene Wynn

Class of 1967

SOPHOMORE CLASS OFFICERS: Tim Hoffman, President; Mark James, Vice Pres.; Judy Paulsen, Secretary; Linda Carothers, Treas.



Carol Anderson



Debbie Bates



Dennis Beals



Rae Blevins



Sue Blindt



Don Boose



Margaret Braithwaite



Dale Brockman



Anna Burden



Linda Carothers



John Carver



Dave Cinert



Bart Clouston



Mary Colby



Martha Craig



Ray Crow



Jon Cudworth



Doug Cunningham



Joe Delaney



John Dooley



Ed Eble



Ed Engel



Jon Fischer



Ed Fraser



Bruce Frey



Larry Froehlich



Bill Gabler



Almarita Gabris



Hal Glatzhofer



Steve Grittner



Janet Hall



Pat Harr



Cathy Heitz



Penny Hodous



Tim Hoffman



Phillip Jacobs



Mark James



Gary Jenkins



Bob Johnson



Herb Johnson



Pat Jones



Steve Kandlik



Pat Kendall



Mariloral Kincaid



Steve Kitcoff



Mike Klima



Rae Knox



Karen Kroener



Frank Lacek



Jeff Laman



Art Laramy



Spencer Leigh



Stanley Lemons



Roger Lepisto



Larry Lewis



John Liszka



Mike Mason



Judy McIlwain



Sue McMahon



Mike Meyer



Sally Monroe



Jim Montague



Tom Morgan



Bobbi Moss



Al Moudry



Carleen Nelson



Judi Paulsen



Jerry Pearce



Pat Peters



Shirley Plankinton



Gordon Plohr



Tom Reeder



Hope Rice



Pam Riske



Barbara Rittgarn



Shirley Roch



Ron Rychtarik



Bill Sass



Coral Sayce



Jo Schmidt



Don Schmoker



Gary Seaton



Tom Sheahan



Wendy Sikorski



The sophomore class float expressed Plainfield's epitaph.



Jim Simon



Glenn Simpson



Loren Sirko



Roy Smith



Shirley Spannuth



Arlee Spence



Bob Srail



Jan Stackpole



Gerri Stank



Bob Stanley



Jim Stanley



John Steurer



Sue Szal



Bob Taylor



Dale Toberman



Linda Toberman



Dennis Tomacek



Tom Tomera



Wayne Troyer



Terry Wald



Roger Warner



Brent Wicox



Pam Wilson



Bruce Wolfing



Diane Woods



Leonard Wurl



Audrey Yackley



Linda Zettel



Sue Zinner



Class of 1968

FRESHMAN CLASS OFFICERS:
 Otto Kindshoven, Vice Pres.,
 Joan Kramer, Secretary;
 Ellen Koba, Treasurer;
 Tom Mason, President.



Mike Athey



Beth Baker



Andy Bakken



Sandra Bakken



Debby Baderstadt



Bobbie Blevins



Ed Buttry



Linda Byrd



John Carothers



Don Carrie



Al Carter



Linda Coffey



Steve Cook



Don Cross



Sue Curtin



Betty Dyntera



Ed Evans



Vernon Everett



Frank Ferrin



John Forest



Dave French



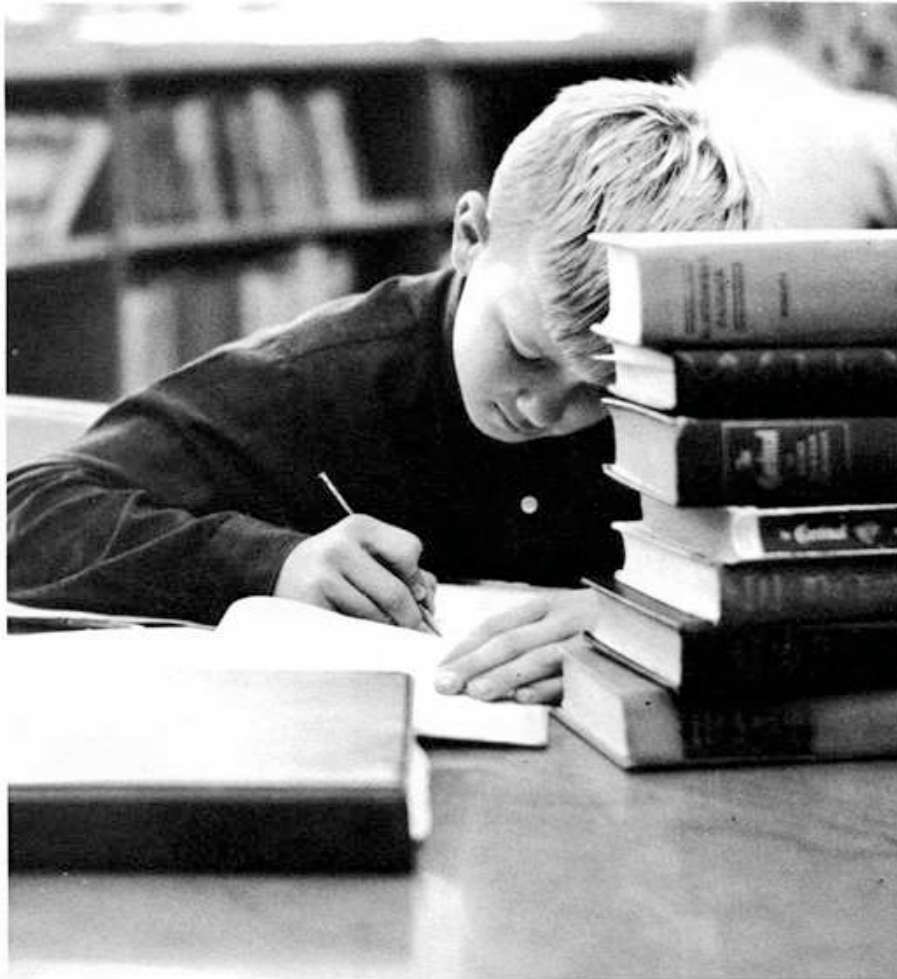
Pam Gabler



Sherry Gamble



Carol Gandolfo



Freshman Dean (Dennis?) Ross studying (?) in the library.



Brenda Getty



Gayle Gildernick



Greg Gorham



Elmer Grunst



Barb Hammer



Lee Hankinson



Neil Hanson



Gary Harper



Nick Heinz



Fred Hirsimaki



Kathy Homan



Gary Houha



Joe Ingram



Agnes Jannisch



Galen Jelskey



Doug Jensen



Charles Jeschke



Stephanie Johns



Fern Johnson



Verna Jones



Lynn Kalaher



Steve Kanaba



Steve Kaye



Kathy Kemerling



Kirby Kepford



George Kilens



Otto Kindshoven



Judy King



Gary Klima



Ellen Koba



Keith Kraft



Laura Krause



Joan Kremer



Roy Krueger



Donna Kubicek



Jackie Kusnierz



Don Kvasnicka



Linda Leja



Ken Lenard



Bonnie Liaromatis



Larry Lien



Bob Lindgren



Jeff Lynch



Leroy Marcellis



Dick Marshall



Tom Mason



Pat Matteucci



Larry Maxwell



Bill May



Gail Meister



Lonnie Mitchell



Belinda Montes de Oca



Martin Munjak



Cliff Murphy



Carl Nelson



Charles Nysted



Diane O'Connor



Brenda Perry



Marsha Phillips



Elizabeth Pipek



Paul Porter



Gail Powers



Dale Reed



John Reeder



Linda Renc



Bob Rice



Dean Ross



Dennis Ross



Mark Ross



Joanne Rott



Judy Saltis



Terri Schummer



Jerry Sedlock



John Skalic



Charlene Smith



Carol Stanley



Laurel Stanley



Mike Stanton



Cathy Strauley



Kathy Studeny



Vicki Tarr



Sue Taylor



Bill Thomas



Bob Thompson



James Tibbets



Jeff Trostad



Doug Tuskey



Daryl Van Kampen



Jon Wells



Judy Westerhoff



Larry Wetzel



Rick Wheeler



Dave Williams



Jim Winn



Kathy Wood



Dawn Wright



Ed Wright



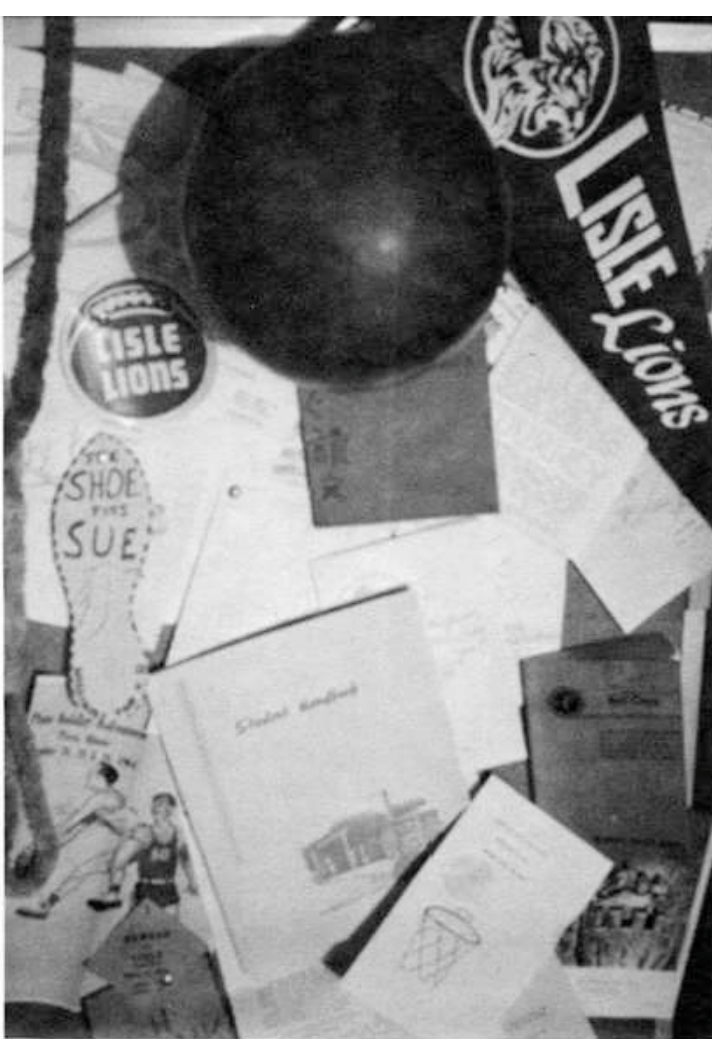
John Yackley



Richard Yackley

Senior Rich Mason and Freshman Ellen Koba at the Freshman Mixer.





Graduating Seniors . . . Class of 1965

When one comes to the senior section in a yearbook, he is subconsciously expecting nostalgia. We hope our readers forgive us if we, too, reminisce a little; for nothing is ever complete without a word or two said about it.



TOM M. BREEN

Baseball 1,2,3,4; Basketball 2;
French Club 1,2; Wrestling 2;
Varsity Club 2,3,4.



DENNIS A. BRINEGAR

Willowbrook High School, Villa
Park, Illinois 1. Audio Visual
1,2,3,4; Chess Club 1; Drama
Club 1,2,3,4; Gymnastics 1; Foot-
ball 1; Library Aides 2; Pep Club
2,3; Science Club 3; Track 1,2,
3,4; Wrestling 2; Varsity Club
3,4.



KENNETH P. BURGAREWICZ



LINDA FRANCES BUMBER

Drama Club 1,2,3,4; Girls' Ath-
letic Association 1,2; Hall Moni-
tor 4; Pep Club 1,2.



ROBERT W. BAIN

Kalamazoo Central High School, Kalamazoo, Michigan 1,2,3. Intramural Basketball 1,2; Latin Club 1,2,3; National Honor Society 4; Newspaper Staff 1, Production Editor 4; Science Club 1,4.



DONALD L. BARTA

Northwestern Military and Naval Academy, Lake Geneva, Wisc. 1. Audio Visual 2; Band 1,2,3,4; Baseball 1; Chorus 2,3,4; Football 1,3,4; French Club 3,4; Pep Club 1,2; Science Club 3; Track 2; Wrestling 2; Varsity Club 3,4.



EDWARD BLINDT

Audio Visual 1,2; Chess Club 1,2; Class Officer: Treasurer 3; Football 1,2,3,4; French Club 3,4; Hall Monitor 3; Inventor's Club 1; Intramural Basketball 1,2; Pep Club 3; Science Club 3,4; Track 1,2,3,4; Varsity Club 4.



HOWARD L. BRADLEY

Riverside-Brookfield High School, Riverside, Illinois 1,2. Chorus 1,4; Class Officer: President 3; National Honor Society 3,4; Newspaper 3,4; Pep Club 4, Vice-President 2, President 3; Science Club 2,3; Student Council, Social Committee Chairman 3, Election Committee Chairman 4; Track 2.



MARY ELIZABETH BUTTRY

Future Homemakers of America 1,2,3,4; Pep Club 1,2.



RALPH J. CALIENDO

Baseball 4; Basketball 2; Football 1; Intramural Basketball 1; Track 2.



GLENN G. CANALE

Intramural Basketball 1.



ANNA LISS CATLIN

Peoria High School, Peoria, Illinois 1. Chorus 1,2,3,4; Class Officer: Secretary 4; Drama Club 2,3,4; French Club 3, Secretary-Treasurer 4; Future Homemakers of America 2, Secretary 3, Section Vice President 4; National Honor Society 3, Secretary 4; Pep Club 2, Vice President 3, Secretary 4.



TERRANCE G. CINERT

Audio Visual 1,2,3; Football Manager 1,2; Intramural Basketball 1,2; Track 1,2,3,4; Wrestling 2.



WILLIAM A. CLOUSTON



LAVERN GLORIA COOK

Sacred Heart Academy, Lisle, Illinois 1,2. Chorus 1,2; Drama Club 3,4; Future Teachers of America 3; Girls' Athletic Association 1,2; Pep Club 3,4.



CATHEEN JEANNE CURTIN

Sacred Heart Academy, Lisle, Illinois 1,2. Girls' Baseball 1; Girls' Basketball 1; Cheerleading 1; Chorus 1,2,3,4; Drama Club 4; Future Homemakers of America 3,4; Future Homemakers of America 3,4; Girls' Athletic Association 1,2; Homecoming Queen 4; Newspaper 2; Pep Club 4; Science Club Secretary 3.



ALICE JEAN DYNTERA

Art Club 1,2; Commercial Club 4; Future Homemakers of America 1; Hall Monitor 4; Pep Club 1.



MARY LUCILLE EDWARDS

Chorus 1,2,3,4; Commercial Club 3,4; Drama Club 1,2,3,4; Future Homemakers of America 2,3; Secretary 4; Girls' Athletic Association 1,2,3; Library Aides 1; National Honor Society 4; Newspaper 4; Pep Club 1,2,3, Vice President 4.



BOB ESPOSITO

Baseball 4; Basketball 1,2; Football 1.



RON W. FORD



SARA JOAN DeMEO
 Art Club 4; Cheerleading 1,2;
 Drama Club 1,2,3,4; Future
 Homemakers of America 1,2,3,4;
 Girls' Athletic Association 1,2;
 Homecoming Court 4; Pep Club
 1,2.



KAY ELLEN DIEHL
 Band 1,2,3,4; Commercial Club
 President 4; Drama Club 1;
 Girls' Athletic Association 1,2;
 Treasurer 3, Secretary 4; Library
 Aide 4; Newspaper 3,4; Pep Club
 1; Spanish Club Treasurer 3.



MICHAEL L. DONALDSON
 Football 2,4; Intramural Basket-
 ball 2; Student Council 3; Track
 1,2,3,4; Wrestling 2; Varsity
 Club 3,4.



KATHY LYNN DUBIN
 Commercial Club 3,4; Debate
 1,3; Drama Club 1,2,3,4; Future
 Homemakers of America 2,
 Treasurer 3, President 4; Future
 Teachers of America 4; Girls'
 Athletic Association 1,2; Inven-
 tor's Club 1; Pep Club 1,2,3,4;
 Science Club 2; Yearbook Staff 2.



ELIZABETH HANKINSON
 Art Club 1, President 3; Drama
 Club 1,2,3,4; Future Teachers of
 America 4; Girls' Athletic Asso-
 ciation 3, Sports Chairman 2,
 Vice President 4; Library Aides
 3,4; Newspaper 4; Science Club
 3.

Class of 1965

But before we begin, it must be understood that we are not writing about a complete or perfect group. Some will have no feeling for what we say here; but we contend that those some were never truly part of the group — it is in this respect that we dedicate our sentiments to those who were and are "part of the group."



PAUL L. HAVENAR

Audio Visual 1; Basketball 1,2,3,4; Chorus 3; Class Officer; Vice President 2; Drama Club 3,4; Football 1,2,3,4; Future Teachers of America 1; Hall Monitor 4; National Honor Society 3,4; Science Club 3; Student Council 2, Vice President 3, President 4; Track 1,2,3,4; Varsity Club 2,3,4.



WILLIAM J. HAYES

Audio Visual 1,2,3,4; Class Officer; Vice President 4; Drama Club 3,4; French Club 2,3,4; Intramural Basketball 1; Newspaper Assistant Editor 4; Science Club 1; Track 1,2.



CATHY J. HEITZ

Future Nurses of America 3.



KATE ANN HLIVJAK

Sacred Heart Academy, Lisle, Illinois 1,2. Art Club 1,2, Vice President 3, President 4; Chorus 1,2; Drama Club 3,4; Future Homemakers of America 1,4; Future Teachers of America 3, President 4; Girls' Athletic Association 1,2; Girls' Baseball 1; Girls' Basketball 1; Hall Monitor 4; Newspaper 2,4; Pep Club 3,4; Science Club 3; Yearbook Staff 2,3, Art Editor 4.



DARLENE JEAN JESCHKE

To many of us, it must hardly seem possible that high school is almost over, that a twelve year career is soon to be completed. Has it been that long since we first entered school, graduated from eighth grade, began high school?



Ed Blindt, Dwight Hoffman, and Bill Hayes, as Sophomores, with Mrs. Blazek.



DWIGHT K. HOFFMAN
Audio Visual 2,3; Basketball 1, 2,3,4; Chorus 4; Class Officer; Treasurer 4; Drama Club 3; Football 1,2,3,4; Hall Monitor 3; National Honor Society 3,4; Science Club 3; Student Council 2, Public Relations Chairman 4; Track 1,2,3,4; Varsity Club 2,3,4.



LESLIE CHRISTINE HUTCHISON
Art Club 1,2; Chorus 4; Drama Club 1,2,3,4; Library Aide 1; National Honor Society 3,4; Pep Club 2, President 4; Yearbook Staff Assistant Art Editor 2,3; Senior Editor 4.



MICHAEL J. JANISZEWSKI
Audio Visual 1,2, President 3, 4; Chess Club 1, Treasurer 2; Drama Club 1,2,3,4; Football 1,2,3; French Club 3,4; Future Teachers of America 2,3,4; Intramural Basketball 2; Newspaper 4; Science Club 2,3; Track 1,2; Varsity Club 3,4.



DONNA EILEEN JASION
Chorus 1,2; Future Homemakers of America 1; Library Aides 1,2,3.



EDWARD C. JONES
Audio Visual 2; Baseball 1,2,3,4; Football 1,2,3,4; French Club 3; Intramural Basketball 1; Pep Club 1,2; Varsity Club 2,3,4.



ARLENE HELEN JYLLAND
Chorus 2,3,4; Future Homemakers of America 2,3; Girl's Athletic Association 1; Library Aides 1,2,3.



ANTHONY L. KAYE
Lenape Regional High School, New Jersey 1,4; Normanton High School, England 2; Scarborough College, England 3. Chorus 4; Cricket 2,3; Cross Country 2,3; Football 1,2,3,4; French Club 2,3; Swimming 2,3; Spanish Club 1; Track 1,2,3,4; Varsity Club 2,3,4.



TERRY R. KIMES
Audio Visual 4; Band 1,2,3,4; Basketball 2,4; Drama Club 3,4; Football 1,2,3,4; Intramural Basketball 1; Newspaper 4; Science Club 3,4; Track 1,2; Varsity Club 3,4.



ROBERT P. KING

Chess Club 1; Chorus 2; Intramural Basketball 1.



SUSAN JANE KLIMA

Art Club 1; Chorus 1,3; Drama Club 2,3; Future Homemakers of America 2,3; Girls' Athletic Association 1,2; Pep Club 1,2,3.



ROMAN E. KONIECKE

St. Rita High School, Chicago 1. Audio Visual 3,4; Chess Club 2; Library Aides 2; Science Club 3; Track Manager 2.



BARBARA F. KUBES

Cheerleading 1; Commercial Club 4; Drama Club 1,2,3,4; Future Homemakers of America 1,3; Girls' Athletic Association 1,2; Newspaper 4; Pep Club 1,2,3,4.



RICHARD KUSNIERZ

Baseball 4; Intramural Basketball 1; Wrestling 2.



HAL A. LAMAN

Baseball 2; Basketball 1,2.



MARIANNE LeLINGIS

Art Club 2,3; Commercial Club 3; Drama Club 1,2,3; Girls' Athletic Association 1,2,3; Pep Club 1,2,3.



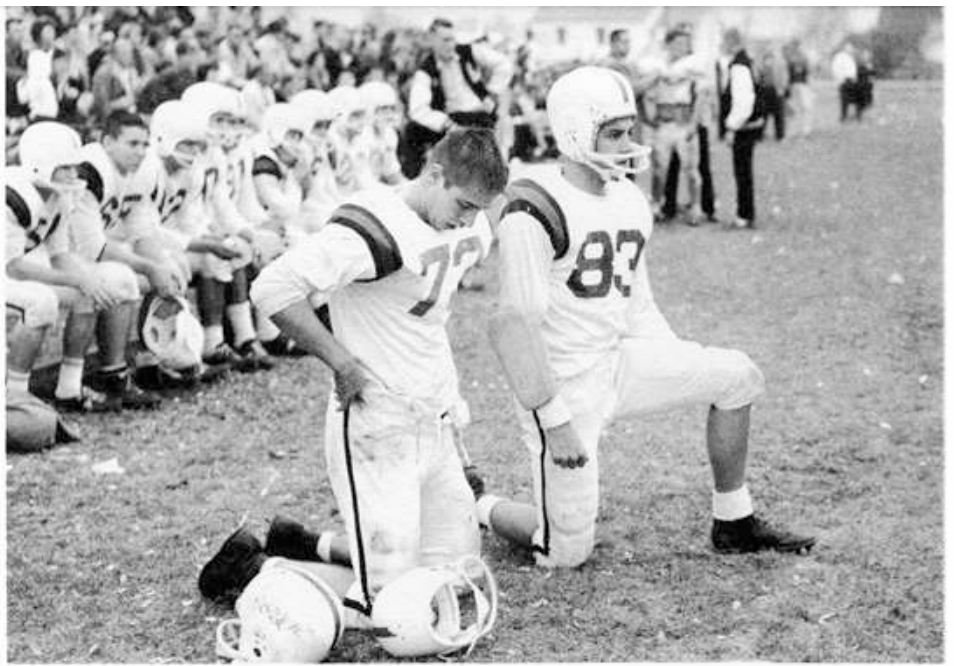
CAROL E. LENARD

Future Homemakers of America 1,2,3,4.



CURTIS K. KULP

Wauconda High School, Wauconda, Illinois. Art Club 3,4; Drama Club 4.



But these years have been eventful, and not one of us remains unchanged. We have been acted upon by time, and we all bear the effects. Possibly the most significant thought is that we have lived a space of time together; and when we look back on these years just finished, perhaps each of us will have a warm feeling — **simply because we were part of a group, we shared an experience, we belonged.**



ROSS E. LEWIS



SHERRY JEAN LOCKETT

Commercial Club 3, Secretary-Treasurer 4; Drama Club 1,2,3,4; Future Homemakers of America 2,4, Vice President 3; Future Nurses of America 3,4; Girls' Athletic Association 1,2; Hall Monitor 4; Pep Club 1,2,3,4.



BOB LUTHER

Chess Club 1,2; Baseball 4.



WILBUR GLEN LUTHER

Art Club 4; Basketball 1,2,3,4; Football 1,2,3,4; French Club 3; Future Teachers of America 4; Hall Monitor 4; Pep Club 3; Science Club 3; Track 1,2,3,4; Varsity Club 3,4.



SENIOR CLASS OFFICERS: Dwight Hoffman, Treasurer, Anna Catlin, Secretary, Bill Hayes, Vice-President, Jim Sloup, President.

Needless to say, these sentiments were not part of our conscious daily lives. Yet it must be true that there was, at various times, a combined effort — of working together, of helping and serving, of individual development.



DARLENE RUTH MEISTER
Commercial Club 4; Future Homemakers of America 1,4, Treasurer 2, President 3; Girls' Athletic Association 1,2; Pep Club 1,2.



JUDITH ANN MIZENER
Drama Club 2,3; Future Homemakers of America 1,2,3; Girls' Athletic Association 1,2; Pep Club 1,2,3,4; Student Council 2.



ROBERT C. MONTAGUE
Baseball 1,2,3,4; Band 1,2,3,4; Basketball 1,2,3,4; Football 1,2; Hall Monitor 4; Pep Club 3; Varsity Club 3,4.



CARL MOORE
Audio Visual 1.



RICHARD MASON

Baseball 1,2,3,4; Basketball 1,2,3,4; Chorus 3,4; Drama Club 1,2,3,4; Football 1,2,3,4; National Honor Society 3,4; Yearbook Staff 2, Assistant Editor 3, Editor 4.



LOUISE E. MAY

Art Club 2,3; Drama Club 1,2,3,4; French Club 2,3, President 4; Future Homemakers of America 1; Girls' Athletic Association 1; Hall Monitor 3,4; Library Aides 2; National Honor Society 4.



MADGE RAYE MAYHALL

Jackson Junior High School, Vienna, West Virginia 1. Chorus 3; Drama Club 2,3; Future Homemakers of America 1,2; Homecoming Court 4.



MARY McILWAIN

Class Officer: Secretary 1,3; President 2; Drama Club 1,2,3,4; French Club 4; Girls' Athletic Association 1,2, Secretary 3, President 4; Library Aides 4; National Honor Society 3,4; Pep Club 1,2; Spanish Club Vice President 3, President 4; Student Council Vice President 4; Yearbook Staff 3,4.



SUZANNE LYN MORRIS

Cheerleading 2, Captain 4; Chorus 3,4; Drama Club 1,2,3,4; Future Nurses of America 3; Girls' Athletic Association 1; National Honor Society 4; Pep Club 1,2,3,4; Spanish Club 3,4; Student Council 1; Yearbook Staff 3.



ROBERT G. MOUDRY

Chess Club 2; Track 2; Yearbook Staff Photographer 3,4.



VINCENT A. MOUDRY

Basketball Manager 1; Football 1,2,3, Co-Captain 4; Intramural Basketball 1; Track 1,2; Wrestling 2; Varsity Club 2,3,4.



GARY D. MULKINS

Band 1,2; Drama Club 1,4; Football 1,2,3,4; Hall Monitor 2; Intramural Basketball 1; Science Club 3; Track 1,2; Wrestling 2; Varsity Club 4.



THOMAS E. NICHOLS

Band 1,2,3,4; Class Officer: Treasurer 2; Chess Club 1,2; French Club 3; Intramural Basketball 1; Pep Club 2,3; Science Club 1,2; Student Council 1, Election Chairman 3; Social Chairman 4; Track 1.



MICHAEL ELLEN O'CONNOR

Cheerleading 1; Class Officer: Treasurer 1; Commercial Club 4; Drama Club 1,2,3; Future Homemakers of America 1; Girls' Athletic Association 1; Hall Monitor 3,4; Homecoming Court 4; Pep Club 1,2; Yearbook Staff 3.



MARY ANN ELIZABETH PATTEN

Archbishop Murry Memorial High School, St. Paul, Minnesota 1; Heelan High School, Souix City Iowa 2. Chorus 1,2; Commercial Club Activities Chairman 4; Drama Club 4; Future Homemakers 3,4; Hall Monitor 4; Pep Club 4.



MARSHA LYNN PECHOUS

Cheerleading 4; Chorus 3; Commercial Club 4; Drama Club 2,3,4; Future Homemakers of America 1,2,3,4; Future Nurses of America 3; Girls' Athletic Association 1,2; Hall Monitor 3; Newspaper 3,4; Pep Club 1,2,3,4.

Class of 1965

The end-product of the twelve years will appear, finally, during the June Commencement. From there, "each will go his separate way," but not without having affected Lisle, and not without having been affected.



SANDRA LEE RUDDER

Drama Club 1,2,3; Future Homemakers of America; Girls' Athletic Association 1,2; Library Aides 1,2,3; Pep Club 1,2.



RODNEY B. PERRY

Audio Visual 1,2,3,4; Chess Club 1; Drama Club 1,2,3,4; Football 2; Intramural Basketball 1; Pep Club 2,3,4; Science Club 2,3; Track 1,2.



RICHARD J. REECK

Central High School, St. Paul, Minnesota 1; Cretin High School, St. Paul, Minnesota 2,3.



STEPHEN A. ROAKE

Audio Visual 1,2,3,4; Chess Club 1,2; Drama Club 1,2,3,4; Football 1,2; French Club 3; Intramural Basketball 1; Pep Club 2,3,4; Science Club 2,3; Track 1,2.



CHARLES A. ROSSETER

Audio Visual 4; Football 2,3,4; Track 1,2,3,4; Wrestling 2; Varsity Club 3,4.



EDWARD A. RYCHTARIK

Basketball 4; Chess Club 1,2; Football 1; Intramural Basketball 1; Science Club 3; Track 2.



SUSAN LEE SCHMIDT

Chorus 1,2,3,4; Drama Club 1,2,3,4; Future Nurses of America 3; Girls' Athletic Association 1; Treasurer 2; Library Aides 1,2,3; Newspaper 4; Pep Club 1,2,3,4; Spanish Club 3.



JOHN SEATON

Band 1,2.



PATRICIA LUCILLE SHANNON



LANA JEAN SHULTES
Future Homemakers of America
1; Pep Club 1.



WILLIAM C. SHULTZ
Band 1,2,3,4; Drama Club 1,2,
3,4; French Club 3,4; Future
Teachers of America 2,4, Presi-
dent 3; Library Aides 2,3; Na-
tional Honor Society 3,4; Pep
Club 2,3,4; Science Club 2,3,4;
Yearbook Staff 3,4.



JOSEPH E. SIEBERT
Basketball 2; Chess Club 1; Class
Officer: President 1, Treasurer 3;
Drama Club 1,3,4; Football 1,2,
3,4; French Club 3,4; Intramural
Basketball 1; National Honor So-
ciety 3, President 4; Science Club
3,4; Student Council 3, Treasur-
er 4, Calendar Committee Co-
Chairman 3, Ways and Means
Chairman 4; Track 1,2,3; Var-
sity Club 3,4; Yearbook Staff
Business Manager 4.



EDWARD G. SIMON
Football 1,2,3, Co-Captain 4;
Track 2; Varsity Club 3,4.



JAMES A. SLOUP
Audio Visual 2,3,4; Basketball
Manager 4; Class Officer: Presi-
dent 4; Football Manager 3;
French Club 2,3,4; Hall Monitor
4; Science Club 3; Track 2,3,4;
Varsity Club 3,4.



WILLIAM R. SMITH
Audio Visual 3,4; Band 1,2,3,4;
Football 1,2,4; French Club 2,
3,4; Intramural Basketball 1;
Newspaper 3,4; Track 1,2;
Wrestling 2; Varsity Club 3,4.



JIM W. SMITH
Lincoln High School, Seattle,
Washington 1,2,3. Drama Club
3; Track 2; Wrestling 1.



CAROL S. SODERLUND
Cheerleading 1,2,3,4; Commer-
cial Club 4; Drama Club 1,2,3,4;
Future Homemakers of America
1,2,4, Public Relations Chairman
3; Girls' Athletic Association 1,
2,3; Hall Monitor 2,3,4; Home-
coming Court 4; Newspaper 3,
Society Editor 4; Pep Club 1,2,3,
4; Student Council 2.



Kay Diehl and Terry Kimes share impressions of Homecoming '64 with Mary McIlwain.



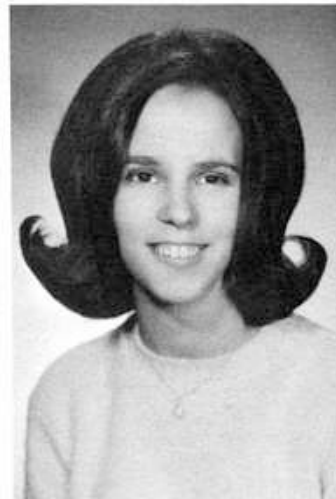
GREG K. SIMPSON
Football 2,3.



WAYNE L. SRAIL



LURIE STANLEY
Chorus 4; Library Aides 1.



SANDRA KAY STARKE
Lyons Township High School, Western Springs, Illinois 1. Art Club 1,4; Cheerleading 2; Chorus 1; Drama Club 2,4; Future Homemakers of America 1,2,3; Girls' Athletic Association 1,2; Library Aides 1; Pep Club 1,2,3,4.



GLORIA JEAN SWINK
Drama Club 2,4; Future Nurses of America 3; Future Teachers of America 2; National Honor Society 3,4; Newspaper Business Manager 4; Science Club 4, Secretary 3.



LYNN THAGAARD

Basketball 1,2; Drama Club 1, 2,3; French Club 1,2; Hall Monitor 2,3; Intramural Basketball 2,3; Track 1,2; Varsity Club 3,4.



LINDA ELEANOR THOMPSON

French Club 1,3,4; Library Aides 3,4.



JAMES H. TOMERA



LINDA KAY TROSTAD

White Bear High School, White Bear Lake, Minnesota 1,2. Drama Club 4; Future Homemakers of America 4; Girls' Athletic Association 2; Newspaper 4; Pep Club 2,3; Ski Club 2; Speech Club 2.



SANDIE LYNETTE WIEGERT

Drama Club 2; Future Homemakers of America 1,2,3,4; Girls' Athletic Association 1,2; Pep Club 1,2,3.



KAREN MAE WOOD

Chorus 4; Commercial Club Projects Chairman 4; Drama Club 1,2,3,4; Future Homemakers of America 4; Future Teachers of America 1,2; Library Aides 2; Pep Club 1,2,3; Student Council 2, Calendar Committee Chairman 3, Secretary 4; Yearbook Staff 3.



JACQUELYN M. WIRTH

Holy Child Academy, Waukegan, Illinois 1. Art Club Vice President 4; Drama Club 1,2; Freshman Glee Club 1; Future Nurses of America 4; Girls' Athletic Association 1,2; Pep Club 2; Student Council Building and Grounds Chairman 4; Yearbook Staff 4.



JUDY ZEKL

Class Officer: Secretary 2; Drama Club 1,2,3,4; Girls' Athletic Association 1, Secretary 2, Vice President 3; Inventor's Club 2; National Honor Society 4; Newspaper 4; Pep Club 1; Science Club 2; Student Council 1.



BRUCE K. TROYER

Hinsdale Township High School, Hinsdale, Illinois 1,2. Art Club 1; Band 1,2; Football 3; Pep Club 1.

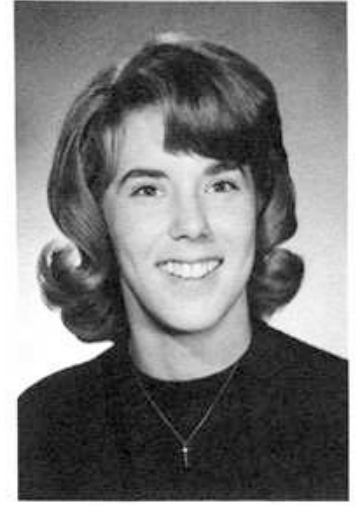


TERRY W. TUMA

Morton East High School, Cicero, Illinois 1,2. Audio Visual 3,4; Baseball 4; Basketball 4; Chorus 4; Debate 3; Drama Club 2,3,4; Football 4; French Club 1,2,3,4; National Honor Society 4; Pep Club 2,3; Science Club 1,2,3,4; Student Government 1,2; Swimming 1,2; Tennis 1,2; Track 2; Varsity Club 4; Yearbook Staff 4.



KAREN STUDENY YACKLEY



JOEL ELIZABETH WELLS

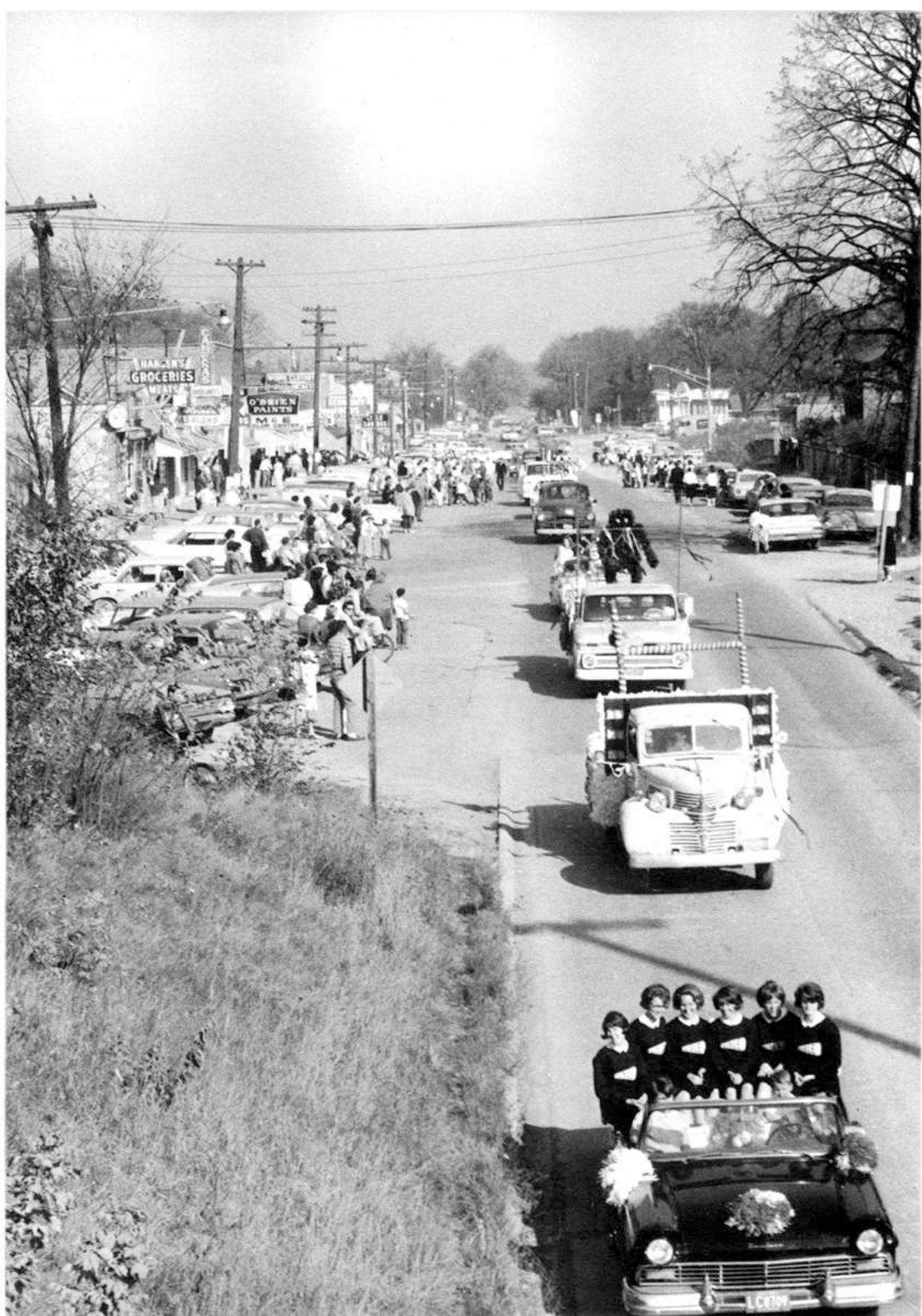
Proviso High School, Hillside, Illinois 1,2. Class Council 1; Girls' Athletic Association 1,2; Girls' League 1; Library Aides 3,4; Yearbook Staff 4.

Linda Thompson and Mike Janis; Homecoming 1964.





SPONSORS



CONGRATULATIONS CLASS OF '65

BANK OF LISLE



4733 Main Street / Lisle, Illinois / Woodland 9-2800
Serving "The Arboretum Village" and Surrounding Area

Phone 969-0925

**BELOM
REAL
ESTATE**



Homes

Farms

Business

4716 Main St.
Lisle, Illinois



D & H SERVICE STATION

Greasing
Pickup &
Delivery Service
Road Service



Tires
Batteries
Tune-Up By
SUN Equipment

Trailers for Rent

WO 8-9874

941 Ogden Ave.

Lisle, Illinois

Compliments

of

DuPage PowerVac Furnace Cleaning and Heating Service

E. D. Brophy

4712 Main St.

Lisle, Illinois

WO 9-3190

CONGRATULATIONS TO THE CLASS OF '65

H A V E R L A N D T ' S

Cameras • Television Sets • Service

4754 Main Street

Lisle, Illinois

LISLE DARI CASTLE

CARRY-OUT

"America's Favorite Across the Nation"

1624 Ogden Avenue WO 8-9711



Diehl SUNOCO

Ogden & Belmont Downers Grove, Illinois

Phone: 969-0775

Auto Services Unlimited



GARY'S PAYLESS DRUG STORE

1040 West Maple



WO 8-4165

DOWNERS GROVE SPORT SHOP

1035 Curtiss Street

Downers Grove

WO 9-0430

School Jackets, School Sweaters, Athletic Equipment
Baseball & Track Equipment, Fishing Tackle



LEO'S CLEANERS

Complete Service

4752 Main Street, Lisle

Phone: WO 9-3835

SWIMMING



PARTIES

FOUR LAKES

Join the fun at



BANQUETS



MAPLE AVE.
Just West of
Route 53



Building a Bigger, Better Lisle
Community

FOR YOUTH	a new direction
FOR DESIGN	a new direction
PLANNING	a new direction for the future

The Meadows

the community for new directions in living . . .



U. S. Choice Meats

Freezer Meats

Frozen Foods

Vegetables

ECONOMY FOODS

Joe and Wanda Rychtarik
Woodland 9-3820

4732 Main Street
Lisle, Illinois

CONGRATULATIONS TO THE CLASS OF '65

EGIZIO Chevrolet Oldsmobile INC.

"Serving Your Automobile Needs"



Ogden Avenue . . . 2½ Miles West of Rt. 53

Naperville, Illinois

BEN FRANKLIN

NATIONALLY KNOWN
LOCALLY OWNED

4716 Main Street

WO 8-7703

Lisle, Illinois

Washing — Lubrication — Tires



LEO'S CITY SERVICE

Ogden & Main

Lisle, Illinois

Phone
WO 8-9709

Tune-Ups

Repair — Muffler

Dynavision

Batteries

Accessories



LISLE DRUG STORE

4734 MAIN STREET

LISLE, ILLINOIS

THE SIGN OF SAVINGS



for

GASOLINES & OILS

* Cigarettes

* Soft Drinks

* Water Softener Salt

NORMAN OIL CO.

Ogden Avenue

Lisle, Illinois

½ Block East of Main St.

WO 8-2800

SPROVIER'S RESTAURANT

Fine American and Italian Food

— Try Our Delicious Pizza —

Carry-out Orders

400 Ogden Avenue

Lisle, Illinois

WHERE YOU SAVE DOES MAKE A DIFFERENCE !



AND LOAN ASSOCIATION

4722 Main Street

Lisle, Illinois

CONGRATULATIONS CLASS OF '65

Established in 1889

ALBERT REIDY CO.

HARDWARE — LUMBER

WO 9-3847

1017 Front Street

Lisle, Illinois

SMITTY'S STANDARD SERVICE

RT. 53 & MAPLE AVE. — LISLE, ILLINOIS

Complete Car Care

* Tune-up

* Road Service

968-9865



LISLE NEWS AGENCY



Home Delivery of ALL Chicago Newspapers

1014 Burlington Avenue
(across from Burlington Depot)

Lisle, Illinois
WOodland 9-4333

969-2740
Jim Lee

964-0473
Troy Nunley

L & N CONSTRUCTION COMPANY

Box 321, Lisle, Illinois

Sewer and Water Lines

Asphalt Drives
Trenching
Earthmoving

Landscaping
Black Dirt
Crushed Stone

Phone WO 9-0295

Homesites Homes Farms

WALTER C. JAHNKE REALTOR

Insurance — Bonds — Mortgages
Rental and Property Management

1018 Burlington Avenue
Just West of Lisle CB & Q R.R. Station

Lisle, Illinois

JOIN A LEAGUE NOW OR DO YOUR
OPEN BOWLING AT THE BEAUTIFUL

LISLE BOWL

Cocktails — Snack Shop

4920 Lincoln, Rt. 53

WO 8-1300

Lisle, Illinois

LISLE COFFEE SHOP

PIZZA CARRY-OUTS

LUNCHEONS

4628 Main Street WO 9-7191

Lisle, Illinois

SEE

WALKER R. GAMBLE

Your Local Agent

for All

Your Insurance Needs

4706 Main Street

Lisle, Illinois



Joseph Floyd and Elmer Zettel

Owners

928 Ogden Avenue 964-1666

Lisle, Illinois

"HAVE A PROBLEM??? ASK US!!"

Compliments of

ILLINOIS MUNICIPAL WATER CO.

1201 Burlington Ave.

Lisle, Illinois

WO 8-4591

WO 9-4627

Compliments of

**JIM & JEFF
REPAIR SERVICE**

1508 Ogden Ave.
WO 9-0859
Lisle, Illinois

**JERRY'S RESTAURANT
and
FOOD SHOP**



LUNCHES CARRY-OUTS PIZZA

1103 Maple Avenue

WO 9-5495

**HANKINSON
LUMBER & SUPPLY CO.**

Plumbing — Hardware — Glidden Paints — Electrical Supplies

Ogden Avenue (Top of Hill)
WOODLAND 9-2718
Lisle, Illinois

Serving Lisle
And Surrounding
Communities.

Over 32 Years
At The Same
Location.

Compliments of

CLASS OF 1965

DOOLEY REALTY

BETTER SERVICE AVAILABLE
FOR
BUYERS AND SELLERS

Woodland 9-3641

* Homes
* Farms — Acreage
1700 Ogden Avenue

* Homesites
* Business
Lisle, Illinois

Compliments of

WALINGER STUDIOS, INC.

Champlain Bldg.

CE 6-7734

37 S. Wabash Ave.

Chicago 3, Illinois

JEFF GOVI'S TAXIDERMY

4730 Main Street

ADOLPH'S BARBER SHOP

4718 Main Street

JOE & JULIE GOVI

4730 Main Street

JOE'S BARBER SHOP

4750 Main Street


VILLAGE HOT DOG

1604 Ogden

THESE MERCHANTS BACKED US —
LET'S BACK THEM



**WE DON'T
PUBLISH THE
MOST
YEARBOOKS..**



...BUT WE DO
STRESS
QUALITY-SERVICE-
AND CREATIVITY!



Consolidated Graphic Arts Corporation

3940 FULTON DRIVE N.W. P.O. BOX 243 • CANTON, OHIO 44718

PHONE 492-2030

Student Index

SENIORS

Bain, Bob 86, 88, 105
Barta, Don 32, 66, 105
Blindt, Ed 32, 89, 105, 108
Bradley, Howie 63, 66, 72, 86, 88, 105
Breen, Tom 104
Brinegar, Dennis 65, 104
Bugarewicz, Ken 104
Bumber, Linda 65, 104
Buttry, Mary 70, 105

Caliendo, Ralph 18, 105
Canale, Glenn 105
Catlin, Anna 43, 66, 70, 86, 89, 105, 112
Cinert, Terry 88, 106
Clouston, Bill 106
Cook, LaVerne 43, 106
Curtin, Cathy 39, 45, 66, 70, 89, 106

DeMeo, Sara 16, 17, 39, 43, 70, 88, 107
Diehl, Kay 64, 69, 72, 73, 107, 117
Donaldson, Mike 32, 107
Dubin, Kathy 43, 70, 71, 73, 107
Dyntera, Alice 65, 73, 106
Edwards, Mary 43, 66, 70, 73, 107
Esposito, Bob 18, 106

Ford, Ron 106

Hankinson, Liz 107
Havenar, Paul 32, 33, 34, 41, 42, 43, 52, 53, 62, 63, 65, 108
Hayes, Bill 16, 17, 43, 72, 89, 108, 112
Heitz, Cathy 108
Hlivjak, Kate 38, 43, 65, 70, 71, 72, 74, 75, 88, 108
Hoffman, Dwight 32, 33, 52, 55, 63, 66, 86, 108, 109, 112
Hutchison, Leslie 38, 43, 66, 86, 74, 75, 109

Janiszewski, Mike 16, 43, 65, 71, 72, 89, 109, 119
Jasion, Dona 109
Jeschke, Darlene 108
Jones, Ed 23, 32, 69, 109
Jylland, Arlene 66, 109

Kaye, Tony 32, 45, 66, 109
Kimes, Terry 16, 32, 43, 65, 88, 109, 117
King, Bob 110
Klima, Sue 43, 110
Konieka, Ray 65, 110
Kubes, Barb 110
Kulp, Kurt 26, 88, 111
Kusnierz, Rich 110

Laman, Hal 110
Lelings, Marianne 110
Lenard, Carol 70, 110
Lewis, Ross 111
Lockett, Sherry 65, 70, 71, 73, 111
Luther, Bob 18, 88, 111
Luther, Boo 24, 32, 38, 44, 52, 55, 65, 71, 111

Mason, Rich 23, 32, 41, 42, 43, 52, 54, 55, 66, 67, 86, 87, 74, 75, 103, 114
May, Louise 43, 65, 86, 89, 114
Mayhall, Madge 39, 114
McIlwain, Mary 43, 63, 64, 70, 75, 86, 89, 114

Meister, Darlene 112
Mizener, Judy 112
Montague, Bob 22, 23, 53, 55, 65, 69, 112
Moore, Carl 112
Morris, Suzie 43, 59, 66, 86, 114
Moudry, Bob 75, 114
Moudry, Vince 32, 45, 114
Mulkins, Gary 32, 43, 114

Nichols, Tom 63, 69, 114
O'Connor, Mike 39, 65, 73, 114
Patten, Mary Ann 26, 43, 65, 70, 73, 114
Pechous, Marsha 59, 70, 73, 114
Perry, Rod 43, 88, 115

Reeck, Rick 115
Roake, Steve 43, 88, 115
Rosseter, Charles 32, 35, 115
Rudder, Sandy 114
Rychtarik, Ed 52, 55, 115

Schmidt, Sue 66, 115
Seaton, John 115
Shannon, Pat 115
Shultes, Lana 116
Shultz, Bill 43, 69, 71, 75, 88, 89, 116
Siebert, Joe 16, 32, 43, 63, 74, 75, 86, 88, 89, 116
Simon, Ed 32, 116
Simpson, Greg 117
Sloup, Jim 24, 65, 89, 112, 116
Smith, Jim 116
Smith, Bill 32, 65, 69, 72, 89, 116
Soderlund, Carol 39, 43, 59, 65, 70, 72, 73, 116
Sraill, Wayne 117
Stanley, Laurie 117
Starke, Sandy 88, 117
Swink, Gloria 72, 86, 88, 117

Thaagaard, Lynn 118
Thompson, Linda 64, 89, 118, 119
Tomera, Jim 118
Trostad, Linda 43, 70, 72, 118
Troyer, Bruce 119
Tuma, Terry 32, 43, 66, 74, 74, 86, 88, 89, 119

Yackley, Karen 119

Wells, Joel 64, 75, 119
Wiegert, Sandy 118
Wood, Karen 43, 63, 66, 70, 73, 118
Wurth, Jacquie 63, 71, 75, 88, 118

Zekl, Judy 18, 64, 72, 86, 118

JUNIORS

Adamec, Bill 32, 90
Armbruster, Myron 90
Barta, Helen 18, 40, 41, 43, 66, 69, 90
Beals, Don 24, 53, 55, 65, 90
Belom, Dennis 24, 74, 75, 90
Benefield, Carla 70, 90
Benson, Norma 90
Bice, Larry 90
Brenstein, Dwight 65, 90
Brinkmeyer, Jan 71, 74, 90
Burkman, Nancy 69, 90

Cantwell, Cathy 90
Carrie, Mike 23, 90
Carter, John 24, 63, 69, 72, 90
Catlin, John 53, 55, 63, 66, 72, 88, 89, 90
Christ, Helen 90
Clouston, Craig 90
Corso, Martin 90

Decker, Georgia 91
DeGraff, James 52, 63, 88, 91
Donaldson, Linda 91
Dooley, Eileen 91
Dudley, Susan 38, 64, 91

Ehart, Michael 91
Fuqua, Sandy 91

Garringer, Ted 91
Gendvil, Margaret 91
Govi, John 91
Griffiths, Geri 44, 88, 91
Gross, Bob 91

Hanson, Mark 32, 65, 91
Heitz, Ron 91
Herlien, Jim 24, 91
Jeffery, Janet 91
Johnson, Don 91
Johnson, Karen 44, 88, 91

Kendall, Diane 70, 91
King, Lana 91
Koff, Gerald 91
Korbar, Rich 18, 91
Kowalczyk, Mary 16, 17, 43, 91
Kral, Peggy 70, 91

Laramy, Sue Anne 91
Lemons, Fran 91
Lewis, Gerald 91
Lewis, Linda 70, 91
Lindgren, Nancy 71, 89, 91, 93
Lindsay, John 43, 91
Liska, Joan 92
Lockett, Walter 88, 92
Losic, John 92

Martin, Janet 66, 92
Martin, Sara 58, 71, 72, 86, 92
McCrossin, June 89, 92
McIlwain, Russ 65, 92
McKibben, Don 92
Melton, Barry 16, 23, 41, 42, 43, 69, 92, 117
Minnick, Holly 59, 65, 71, 92
Mlnarik, Pat 38, 65, 92
Monroe, Audrey 92
Monroe, Doug 24, 92
Mulkins, Sue 69, 71, 92
Murdock, Larry 32, 92

Nichols, Sue 69, 92
O'Connor, John 43, 92, 93

Pearce, Jerry 92
Pechous, Mary Beth 38, 59, 66, 71, 74, 75, 86, 92
Pehlke, Gloria 74, 75, 92
Pippenger, Bob 92
Proud, Dan 24, 52, 69, 90, 92

Reavy, John 23, 92
Reeck, Chris 92
Rigler, Sue 92
Roge, Bill 24, 32, 24, 35, 52, 54, 92

Saltis, Dolores 92
Sanders, James 92
Saraga, Rich 92
Schuenemann, Liz 92
Sedlock, Jim 93
Sikorski, Mike 24, 32, 35, 93

Simonson, Rick 38, 52, 55, 69, 75, 88, 93
Skalic, Linda 16, 43, 59, 75, 90, 93
Smrt, Jim 93
Snow, Jerry 88, 93
Sprietsma, Suzanne 59, 64, 69, 88, 89, 93
Stanley, Gary 43, 52, 65
Stokey, Bill 93
Straub, Julia 69, 93

Trayer, Mike 93
Tsukuno, Gary 63, 93

VanRyn, Debbie 66, 93

Williams, Mike 53, 55, 93
Williams, Sue 59, 66, 71, 90, 93
Woolverton, Chris 70, 71, 89, 93
Wyns, Madeliene 93

SOPHOMORES

Anderson, Carroll 64, 70, 88, 89, 94

Bates, Debbie 70, 94
Beals, Dennis 69, 94
Blevins, Rae 70, 94
Blindt, Sue 70, 94
Boose, Don 48, 94
Braithwaite, Margaret 70, 94
Brockman, Dale 89, 94
Burden, Anna 58, 70, 94

Carothers, Linda 58, 63, 69, 70, 71, 94
Carver, John 29, 48, 94
Cinert, Dave 24, 29, 30, 94
Clouston, Bart 41, 48, 95
Colby, Mary 95
Craig, Martha 70, 95
Crow, Ray 29, 65, 95
Cudworth, Jon 59, 69, 95
Cunningham, Doug 95

Delaney, Joe 95
Dooley, John 95

Eble, Ed 24, 28, 69, 95
Engel, Ed 23, 95

Fischer, Jan 43, 95
Fraser, Ed 89, 95
Frey, Bruce 28, 69, 95
Froehlich, Larry 28, 65, 71, 95

Gabler, Bill 28, 31, 48, 69, 95
Gabris, Almarita 95
Glatzhofer, Hal 95
Grittner, Steve 28, 95

Hall, Janet 95
Harr, Pat 95
Heitz, Nancy 70, 95
Hodous, Penny 41, 43, 66, 70, 95
Hoffman, Tim 23, 32, 43, 53, 63, 94, 95

Jacobs, Phillip 95
James, Mark 24, 28, 48, 94, 95
Jenkins, Gary 28, 95
Johnson, Herbert 95
Johnson, Bob 95
Jones, Pat 66, 69, 70, 75, 89, 95

Kandlik, Steve 95
Kendall, Pat 41, 43, 64, 70, 88, 96
Kincaid, Mariloral 43, 70, 96
Kitcoff, Steve 24, 28, 30, 48, 96
Klima, Mike 28, 96, 45
Knox, Rae 43, 64, 66, 70, 96
Kruener, Karen 71, 96

Lacek, Frank 96
 Laman, Jeff 96
 Laramy, Arthur 23, 29, 48, 96
 Leigh, Spencer 24, 29, 43, 69, 96
 Lemons, Stan 96
 Lepisto, Roger 96
 Lewis, Larry 96
 Liszka, John 96
 Mason, Mike 96
 McIlwain, Judy 43, 70, 89, 96
 McMahon, Sue 69, 70, 71, 96
 Meyer, Mike 96
 Monroe, Sara 66, 71, 96
 Montague, Jim 29, 48, 63, 69, 96
 Morgan, Tom 96
 Moss, Bobbie 43, 64, 70, 72, 89, 96
 Moudry, Al 23, 32, 96
 Nelson, Carleen 71, 96
 Paulsen, Judi 38, 66, 94, 96
 Pearce, Jerry 29, 96
 Peters, Pat 41, 43, 66, 96
 Plankinton, Shirley 43, 70, 96
 Phlor, Gordon 29, 45, 69, 96
 Reeder, Tom 96
 Rice, Hope 63, 65, 66, 69, 70, 97
 Riske, Pam 43, 66, 70, 97
 Rittgarn, Barb 70, 97
 Roch, Shirley 66, 70, 97
 Rychtarik, Ron 97
 Sass, Bill 97
 Sayce, Coral 97
 Schmidt, Jo 66, 70, 97
 Schmoker, Dan 97
 Seaton, Gary 28, 69, 97
 Sheahan, Tom 97
 Sikorski, Wendy 69, 71, 97
 Simon, Jim 98
 Simpson, Glenn 28, 98
 Sirko, Loren 89, 98
 Smith, Roy 98
 Spannuth, Shirley 41, 43, 98
 Spence, Arlee 70, 89, 98
 Srail, Bob 98
 Stackpole, Jan 98
 Stanek, Gerri 43, 66, 70, 98
 Stanley, Jim 28, 98
 Stanley, Bob 98
 Steurer, John 98
 Szal, Susan 70, 98
 Taylor, Bob 24, 43, 48, 98
 Toberman, Dale 98
 Toberman, Lynda 98
 Tomecek, Dennis 28, 98
 Tomera, Tom 98
 Troyer, Wayne 98
 Wald, Terry 29, 98
 Warner, Roger 98
 Wilcox, Brent 23, 28, 98
 Wilson, Pam 66, 70, 98
 Wolffing, Bruce 98
 Woods, Diane 16, 43, 58, 63, 70, 98
 Wurl, Leonard 98
 Yackley, Audrey 71, 98
 Zettel, Lynn 70, 72, 98
 Zinner, Susan 69, 70, 98

FRESHMEN

Athey, Mike 69, 99
 Baker, Beth 71, 99
 Bakken, Andy 99
 Baderstadt, Debbie 70, 99
 Blevins, Bobbie 70, 99
 Buttry, Edd 99
 Byrd, Linda 69, 70, 99
 Carothers, John 69, 99

Carrie, Donald 51, 99
 Carter, Alan 28, 63, 69, 99
 Coffey, Linda 59, 70, 89, 99
 Cook, Steve 51, 69, 99
 Cross, Don 29, 99
 Curtin, Sue 70, 99
 Dyntaxa, Betty 70, 89, 99
 Evans, Ed 99
 Everette, Vernon 29, 99
 Ferrin, Francis 51, 66, 100
 Forest, John 29, 100
 French, Dave 100
 Gabler, Pam 58, 69, 70, 71, 100
 Gamble, Sherry 71, 100
 Gandolfo, Carolynn 71, 100
 Getty, Brenda 100
 Gildernick, Gayle 100
 Gorham, Greg 51, 69, 100
 Grunst, Elmer 88, 100
 Hammer, Barb 43, 69, 70, 100
 Hankinson, Lee 63, 71, 89, 100
 Hanson, Neil 100
 Harper, Gary 29, 30, 100
 Heinz, Nick 100
 Hirsimaki, Fred 29, 100
 Homan, Kathy 69, 70, 71, 100
 Houha, Gary 100
 Ingram, Joe 69, 101
 Jennisch, Agnes 100
 Jelskey, Galen 51, 101
 Jensen, Doug 59, 101
 Jeschke, Charles 101
 Johns, Stephanie 70, 101
 Johnson, Fern 69, 101
 Jones, Verna 70, 101
 Kalaher, Lynn 70, 101
 Kanaba, Steve 28, 101
 Kaye, Steve 101
 Kemerling, Kathy 70, 101
 Kepford, Kirby 48, 101
 Kilens, George 48, 51, 101
 Kindshaven, Otto 59, 99, 101
 King, Judy 43, 66, 89, 101
 Klima, Gary 101
 Koba, Ellen 70, 71, 99, 101, 103
 Kraft, Keith 101
 Krause, Laura 101
 Kramer, Joan 59, 99, 101
 Kruger, Roy 48, 51, 63, 101
 Kubicek, Donna 101
 Kusnierz, Jackie 101
 Kvasnicka, Don 101
 Leja, Linda 70, 101
 Lenard, Ken 101
 Liaromatis, Bonnie 70, 101
 Lien, Larry 101
 Lindgren, Bob 28, 101
 Lynch, Jeff 28, 51, 102
 Marcellis, LeRoy 102
 Marshall, Rich 102
 Mason, Tom 29, 43, 48, 49, 99, 102
 Matteucci, Pat 70, 102
 Maxwell, Larry 29, 102
 May, Bill 69, 99, 102
 Meister, Gail 102
 Miller, Lee 28
 Mitchell, Lonnie 102
 Montes de Oca, Belinda 102
 Munjak, Martin 102
 Murphy, Cliff 29, 69, 102
 Nelson, Carl 102
 Nystedt, Charles 102
 O'Connor, Diane 43, 70, 71, 102
 Perry, Brenda 102

Phillips, Marsha 102
 Pipek, Elizabeth 70, 102
 Porter, Paul 102
 Powers, Gail 71, 102
 Reed, Dale 43, 69, 70, 71, 102
 Reeder, John 102
 Renc, Linda 102
 Rice, Bob 102
 Ross, Dean 102
 Ross, Dennis 102
 Ross, Mark 44, 102
 Rott, JoAnne 102
 Saltis, Judy 89, 102
 Schummer, Theresa 102
 Sedlock, Jerry 103
 Skalic, John 103
 Smith, Charlene 103
 Stanley, Carolyn 43, 103
 Stanley, Laurel 103
 Stanton, Mike 29, 103
 Strauley, Cathy 70, 103
 Studeny, Kathy 103
 Tarr, Vicky 43, 103
 Taylor, Sue 58, 70, 103
 Thomas, Bill 29, 65, 103
 Thompson, Bob 103
 Tibbetts, Jim 69, 88, 103
 Trostad, Jeff 66, 103
 VanKampen, Daryl 63, 70
 Wells, Jon 51, 103
 Westerhoff, Judy 70, 103
 Wetzel, Larry 103
 Wheeler, Rick 66, 103
 Williams, Dave 66, 103
 Wynn, Jim 28, 51, 103

Wood, Kathy 103
 Wright, Dawn 66, 70, 103
 Wright, Ed 69, 103
 Yackley, John 103
 Yackley, Rich 103

1964 GRADUATES

Adamec, Mike 24, 25, 39, 87
 Arlon, Bob 23
 Carlisle, Tim 25
 Carter, Mary 19
 Cinert, Bill 25
 Cunningham, Bruce 25
 Gabler, Sue 87
 Gihle, Bob 24, 25, 67
 Jenkins, Roland 25
 Johnson, Rich 24, 25
 Johnson, Sandy 19
 Kawecki, Jim 23
 Leigh, Dave 24, 25, 67
 Marshall, John 39
 Moyes, Dave 24, 25, 67
 Novak, Mike 23
 Paulsen, Rick 24, 25
 Rychtarik, Diane 39
 Rychtarik, Karen 19
 Sanders, Dianne 19
 Smith, Carol Nan 19
 Smrt, Jim 25
 Wheeler, Dave 67
 Wright, Gary 19

General Index

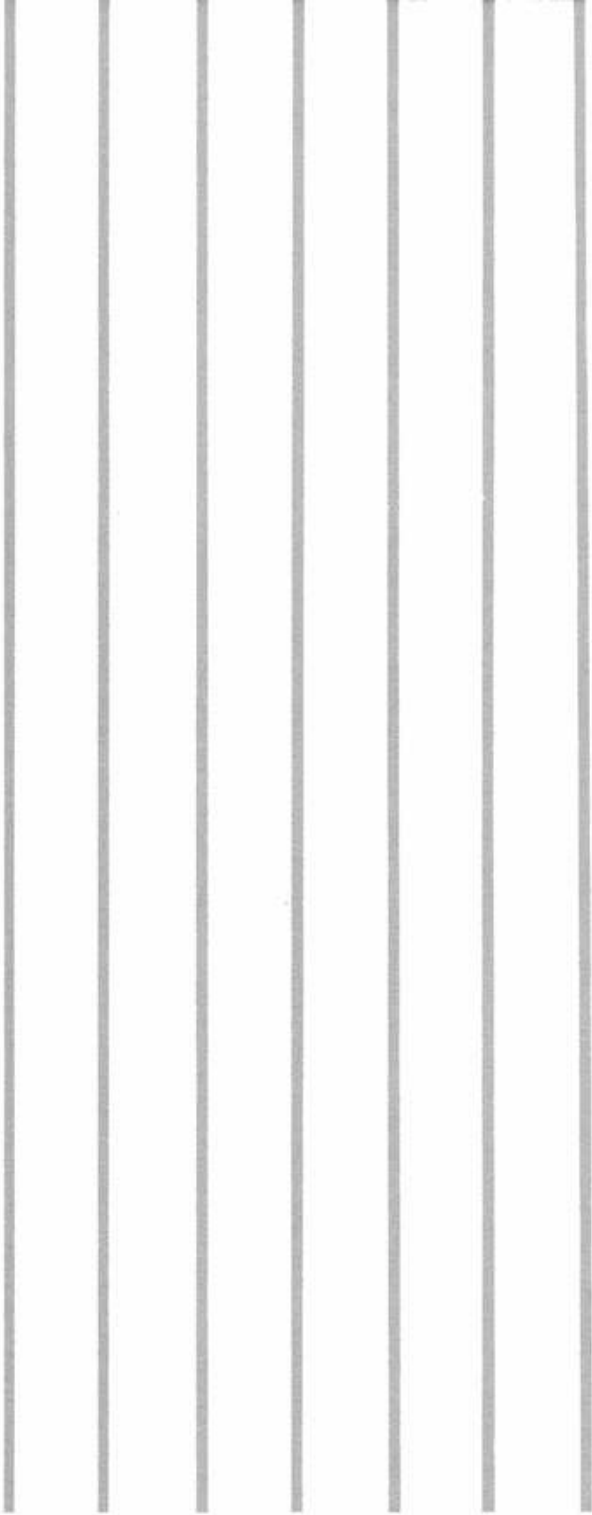
ACTIVITIES AND ORGANIZATIONS

Art Club 88
 Assemblies 44, 45
 Audio-Visual 64, 65
 Band 68, 69
 Baseball 22, 23
 Cheerleaders 56, 57
 Chorus 66, 67
 Commercial Club 73
 Debate 59
 Drama Club 43
 Freshman Basketball 51
 French Club 89
 Frosh-Soph Basketball 48, 49, 50
 Frosh-Soph Football 28, 29, 30, 31
 Future Homemakers of America 70, 71
 Future Nurses of America 70, 71
 Future Teachers of America 70, 71
 Hall Monitors 64, 65
 Honors Day 86, 87
 Homecoming 36, 37, 38, 39
 Informal Dances 46, 47
 Jamboree 20, 21
 Library Aides 64, 65
 Newspaper 72
 Prom 26, 27
 Science Club 89
 Senior-Faculty Basketball Game 58
 Spanish Club 88
 Spring Play 16, 17
 Student Council 62, 63
 Talent Show 18, 19

Track 24, 25
 Vale 74, 75
 Varsity Basketball 52, 53, 54, 55
 Varsity Football 32, 33, 34, 35
 Winter Play 40, 41, 42

FACULTY AND ADMINISTRATION

Bark, Richard 63, 81
 Bartelt, Robert 69, 81
 Blazek, Vera 50, 108
 Bushdiecker, Roger 32, 79
 Castino, Tony 81
 Ciesielski, John 24, 53, 80
 Cusic, Gene 79
 Fee, William 81
 Goodell, Margaret 80, 89
 Hettlinger, Michael 63, 81
 Jensen, Clarence 81
 Johansen, Ann 70, 80
 Jones, Robert 51, 83
 Kanwischer, Marilyn 83, 87
 Knoop, William 78
 Michael, Ruth 83
 Miller, Raymond 78
 Minnick, Verna 71
 Mulcare, John 83, 88
 Palzer, Richard 83
 Parent, Mary 83
 Prokop, Leota 71, 83
 Rapp, George 23, 43, 83
 Samide, Andy 84
 Thompson, Richard 49, 79
 Virgil, Sara 84, 88
 Whitmarsh, Dan 32, 84



“Even such is time, that takes in trust
Our youth, our joys, our all we have,
And pays us but with age and dust;
Who in the dark and silent grave,
When we have wandered all our ways,
Shuts up the story of our days.”

Sir Walter Raleigh (1552-1618)
written the night before his death

Blank end paper

